



# aesthetic

PROCEDURE & TREATMENT GUIDE



# Henry Schein Medical is your reliable network of trusted advisors.

*Rely on Us for...*

## Expert Guidance

*Our knowledgeable team of trusted advisors is dedicated to collaborating with you to meet specific goals related to quality patient care, staff and team growth, and profitability.*

- Revenue Enhancement Tools
- Cost Containment Programs
- Staff Training and Team Building
- Practice Marketing
- Technology Solutions

## Guaranteed Fast Delivery

*All orders received by 5 PM local time are shipped the same day. Your products arrive within 24–48 hours.*



### Celebrating 80 Years of Excellence

Henry Schein is proud of its history. From a New York pharmacy to a Fortune 300 company—we are dedicated to serving our customers, supplier partners, investors, society and Team Schein.

 HENRY SCHEIN®  
MEDICAL

## Price Integrity

*We have relationships at the local, regional, and national level—including all major GPOs—to help manage operating costs and drive value for your practice. Web-enabled reporting tools guarantee your pricing is accurate and consistent.*

## Revenue Enhancement Solutions

*With our ever-increasing portfolio of exclusive and proprietary products, Henry Schein advances surgical outcomes and noninvasive services, while providing retail options to present to your patient community.*

**Rely on Us**

# table of contents

<p><b>practice marketing</b></p> <p>page <b>4</b></p> 	<p><b>patient consultation</b></p> <p>page <b>5</b></p> 	<p><b>anesthesia &amp; monitoring</b></p> <p>pages <b>6-7</b></p> 	<p><b>electrosurgical</b></p> <p>pages <b>8-9</b></p> 	<p><b>recovery &amp; healing</b></p> <p>pages <b>10-11</b></p> 	<p><b>liposuction</b></p> <p>pages <b>12-13</b></p> 
<p><b>laser therapy</b></p> <p>page <b>14</b></p> 	<p><b>cosmeceuticals</b></p> <p>page <b>15</b></p> 	<p><b>ultrasound &amp; massage therapy</b></p> <p>page <b>16</b></p> 	<p><b>rejuvenation procedures</b></p> <p>page <b>17-18</b></p> 	<p><b>patient resale</b></p> <p>page <b>19</b></p> 	<p><b>aesthetic treatment room</b></p> <p>page <b>20</b></p> 
<p><b>spa services</b></p> <p>page <b>21</b></p> 	<p><b>exam room</b></p> <p>page <b>22</b></p> 	<p><b>sterile OR</b></p> <p>page <b>23</b></p> 	<p><b>surgical solutions</b></p> <p>page <b>24</b></p> 	<p><b>patient screening</b></p> <p>page <b>25</b></p> 	<p><b>pharmacy</b></p> <p>pages <b>26-29</b></p> 
<p><b>exam room disposables</b></p> <p>page <b>30</b></p> 	<p><b>csr consumables</b></p> <p>page <b>31</b></p> 	<p><b>gauzes, dressings &amp; wraps</b></p> <p>pages <b>32-33</b></p> 	<p><b>gloves</b></p> <p>pages <b>34-35</b></p> 	<p><b>hypodermics</b></p> <p>page <b>36</b></p> 	<p><b>infection control</b></p> <p>pages <b>37-39</b></p> 
<p><b>iv therapy</b></p> <p>page <b>40</b></p> 	<p><b>personal protection</b></p> <p>page <b>41</b></p> 	<p><b>surgical accessories</b></p> <p>page <b>42</b></p> 	<p><b>surgical instruments</b></p> <p>pages <b>42-43</b></p> 	<p><b>wound closure</b></p> <p>pages <b>44-45</b></p> 	<p><b>practice solutions</b></p> <p>pages <b>46-47</b></p> 

**EXCLUSIVE!**



strategic partners with



## You spend a lot of money marketing your practice. Let us show you how to make your dollars work harder.

When we talk to aesthetic practices we are often surprised to find that while they're spending a lot on marketing, they really don't know how well it's doing.

**So how is *your* marketing performing?  
Find out with a **Free Aesthetics Marketing Audit.****

Let us take a quick peek at your current efforts and we'll tell you what's working what isn't. We'll also give you ideas on how to make what you are doing work better. To arrange for your free audit, call 800-797-1096 or e-mail [info@healthcaresuccess.com](mailto:info@healthcaresuccess.com).



### TELL ME: HOW IS MY MARKETING DOING?

To help you get started, a little information is needed...

The top three areas I'm currently focusing my marketing efforts:

- |   |   |
|---|---|
| <input type="radio"/> Internet Marketing              | <input type="radio"/> Newspaper Advertising         |
| <input type="radio"/> Magazine Advertising            | <input type="radio"/> Shopper Publications          |
| <input type="radio"/> Radio                           | <input type="radio"/> Television                    |
| <input type="radio"/> Word-of-mouth/patient referrals | <input type="radio"/> Direct Mail                   |
|   | <input type="radio"/> In-office marketing materials |

**A \$500  
value**

I'm currently promoting these types of procedures:

- |  |   |
|--|---|
| <input type="radio"/> Skin care                    | <input type="radio"/> Spider vein removal       |
| <input type="radio"/> Botox®/Fillers               | <input type="radio"/> Non-surgical rejuvenation |
| <input type="radio"/> Plastic surgery              | <input type="radio"/> Cosmetic surgery          |
| <input type="radio"/> Hair restoration and removal | <input type="radio"/> Other (please specify)    |

---

---

**To Arrange for Your Free Marketing Audit Consultation,  
call (800) 797-1096 or e-mail [info@healthcaresuccess.com](mailto:info@healthcaresuccess.com)**



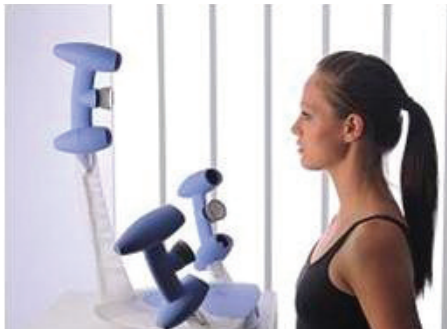


**EXCLUSIVE!**

## Henry Schein Medical offers to help you differentiate your practice and close more surgeries.

Axis Three is a precise, easy-to-use, 3D simulation tool that generates anatomically accurate images by using the patient's own body characteristics. These products provide surgeons, practice managers, and patient coordinators with tools that:

- ❖ Enable both patient and professional to understand the patient's expectations.
- ❖ Improve professional's time and efficiency with patients.
- ❖ Create a more pleasing and less intimidating experience for patients.
- ❖ Reduce subjectivity and help patients meet their expectations.
- ❖ Increase surgical conversion rate.
- ❖ Enable discussions about future procedures on same patient.
- ❖ Decrease the risk of reoperation.

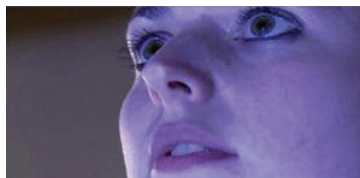


**axisthree**   
...beyond imagination

**27%** ✓  
increase in surgical conversions  
recognized by surgical practices  
using Axis Three

**91%** ✓  
of patients surveyed told us that  
the Axis Three technology  
enhanced  
the consultation experience

**94%** ✓  
decrease in reoperations for  
practices using Axis Three  
technology



**Schedule a complimentary demonstration  
with your trusted advisor from Henry Schein today  
or, to watch a quick video, go to [www.henryschein.com/axisthree](http://www.henryschein.com/axisthree)**

# spotlight on: anesthesia & monitoring

Statistics show that anesthesia today is safer and more effective than ever before due to advancements in monitoring technology and anesthetic drugs, extensive specialty education and training, and high professional standards.

**WelchAllyn®**



## Propaq® CS Monitor

Propaq monitors are cost-effective monitoring solutions for outpatient surgery and procedures. Features a bright, full-color touchscreen display for continuous vital signs monitoring in hospital environments, during conscious sedation, and pre- and post-operative care.

3- or 5-lead ECG, SpO<sub>2</sub>, NIBP, pulse rate, respiration, temperature, and continuous vital signs monitoring

Optional features include:

- Sidestream, mainstream or dual-stream capnography
- 1 or 2 invasive blood pressure channels; integrated printer
- Connectivity to Acuity Central Station (hospital)
- Neonatal, pediatric and adult modes
- Full patient alarms and apnea alarm
- Trending on all parameters
- 3-year warranty

116-2846 Model with 3-lead EKG

### Don't forget:

AED .....Page 22  
DVT .....Page 10  
Crashcart .....Page 10

## Connex® Vital Signs Monitor

The Connex VSM is an advanced, touch screen monitor featuring bright, vivid colors with minimal knobs or buttons for ease of cleaning—perfect for general care floors for surgery centers and other ambulatory care offices. For physician offices, choose the specific workflow you need—monitoring, spot check, or triage.



- SureBP® technology measures BP as cuff is inflating
- Supports adult, pediatric, and neonatal
- Pulse rate and MAP included
- SureTemp Plus and/or Braun thermometry
- Braun ThermoScan® PRO 4000 ear thermometry
- Masimo or Nellcor Pulse Oximetry
- Masimo Total Hemoglobin
- Integrated thermal printer
- HealthOMeter weight scale connectivity

### For Physicians:

- Connects to all leading EHR systems
- Interval programs for automatic readings
- Use across procedure, triage, and general exam environments for both spot check and continuous monitoring
- Save vitals information with the patient name
- Only one step away from the home screen for any function or parameter
- Fast recharging lithium-ion battery

566-0169 BP, SpO<sub>2</sub> Pulse & SureTemp, Printer

Various configurations so you can order monitoring according to your own requirements.

**Paragon**

## Platinum SC430 Anesthesia Solutions

*For the Surgery Center*



*The Platinum SC430 provides sophistication in a flexible, easy-to-use package, designed to meet all your anesthesia requirements*

- ◆ Advanced easy-to-use features for maximum patient safety
- ◆ Comprehensive specification
- ◆ Low ownership costs over ten-year life cycle provide a new, smarter alternative to a refurbished machine
- ◆ Committed customer service
- ◆ Two-year warranty
- ◆ Minimum ten year parts and service guarantee
- ◆ Ventilator with four modes
  - Volume
  - Spontaneous Monitoring
  - Pressure
  - Pressure Support
- ◆ Large color touchscreen

## PRE-OPERATIVE MONITORING

Recommended Units:  
Spot LXi; Spot



108-2980

### Spot Vital Signs® Devices

Vital signs in seconds with hospital-grade technology that's easy to use, accurate, and affordable.

- Measures NIBP, pulse rate, temperature, and SpO<sub>2</sub> in about 30 seconds
- IR Connectivity to Electronic Medical Records
- Lightweight and portable with a variety of mounting options
- All configurations include NIBP, pulse rate, and MAP
- Optional—SureTemp® thermometry, Masimo® or Nellcor pulse oximetry

Probe Covers from SureTemp  
840-2661 250/Box

## MINIMAL/MODERATE

(Conscious Sedation): e.g.,  
Deep Chemical Peels,  
Dermabrasion,  
Facial Procedures, Liposuction

Recommended Units:  
CVSM; Propaq CS



114-1701 and 113-8051

### mindray

#### PM-8000 Express

##### Features and Benefits:

- 8.4" LCD color screen
- Base model includes ECG, NIBP, SPO<sub>2</sub>
- Optional Mindray sidestream end tidal CO<sub>2</sub>
- Incredible value
- Easy to use
- Interval NIBP settings
- Trend reports
- Built-in recorder
- Lithium ion battery included
- 2-year warranty

There are dozens of configurations to meet exact monitoring specifications.

## DEEP SEDATION GENERAL ANESTHESIA

Facial Procedures, Implants,  
Body Contouring Procedures,  
Liposuction

Recommended Units:  
Propaq CS; PM-9000



114-2122 and 113-1313

### mindray

#### PM-9000 Express

##### Features and Benefits:

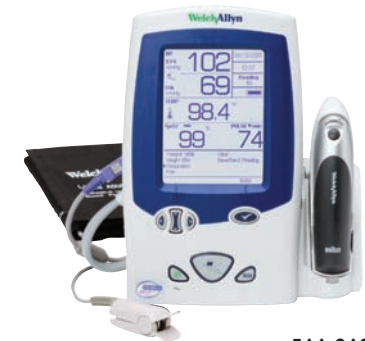
- 12.1" LCD color display
- Base model includes ECG, NIBP, SpO<sub>2</sub>
- Optional Mindray sidestream end tidal CO<sub>2</sub>
- Optional auto identification of all anesthetic gases, ETCO<sub>2</sub>, N<sub>2</sub>O, and O<sub>2</sub>
- Easy to use
- Interval NIBP settings
- Trend reports
- Built-in recorder
- Lithium-ion battery included
- Unmatched quality and value
- 2-year warranty

### Don't forget your Surgical Set-up items:

Breathing Circuits .....Page 31  
DVT Products .....Page 10  
IV Sets and Solutions .....Page 40  
Lidocaine .....Pages 26-28

## POST OPERATIVE MONITORING

Recommended Units:  
CVSM, Spot; Spot LXi



566-0606

### Spot LXi

##### Features and Benefits:

- SureBP® technology measures blood pressure in about 15 seconds
- Choice of SureTemp® Plus or Braun ThermoScan® PRO 4000
- Choice of Masimo® or Nellcor® pulse oximetry
- Ability to manually enter weight, height, respiration rate, and pain level; calculates BMI

Probe Covers for  
ThermoScan Pro4000®  
678-2442 200/Box

Pain Pump Catheters .....Page 10  
Propofol .....Pages 26-28  
Surgical Drains .....Page 31

# spotlight on: electrosurgery

Electrosurgery is commonly used for cosmetic procedures such as breast augmentation and body contouring as well as reimbursable procedures such as removal of tumors and skin lesions and breast reconstruction. It is often preferred by surgeons over laser surgery and cryosurgery for several procedures.

*Bovie*



**913-2993**

The **2250 by Bovie®** offers the most consistent energy delivery in the industry (5000 x per second), ideal for the most demanding procedures like tummy tucks and breast augmentation/reduction. This product is ideal for cosmetic and reconstructive procedures due to its ability to have both monopolar and bipolar accessories plugged in at the same time.

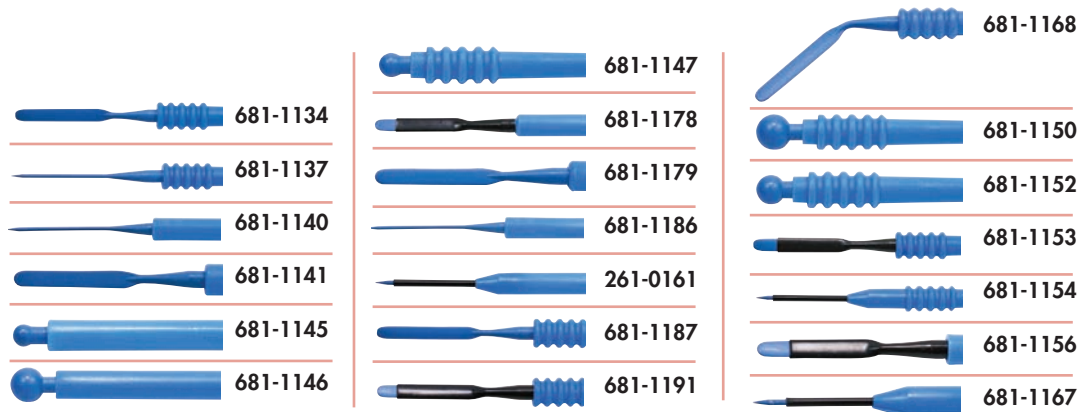


**357-9906**

For a cost-effective alternative or a practice that is performing mostly breast or facial procedures, consider the **Bovie 1250**.

## Time is Money—Resistick II Coated Electrodes

Resistick II™ coated blade, ball and needle electrodes are expertly coated with PTFE (polytetrafluoroethylene). They move more effectively through tissue because they resist eschar buildup, making them much more efficient during surgical procedures.



## Electrosurgical Accessories

### DISPOSABLE CAUTERY

(590-1085)	Cordless, Hi-Temp, Fine Tip	Each
(590-5974)	Cordless, Hi-Temp, Loop Tip	Each
(590-4434)	Cordless, Lo-Temp, Fine Tip, Ophthalmic	10/Box

### Dermal Tip Electrode

(590-9426)	Blunt for 800, 940, 950, Non-sterile	100/Box
(590-1158)	Blunt for 800, 940, 950, Sterile	50/Box
(241-6402)	Sharp for 800, 940, 950, Non-sterile	100/Box
(891-3055)	Sharp for 800, 940, 950, Sterile	50/Box

### Disposable Blade Electrode

(650-3112)	Straight Sharp Needle	25/Box
------------	-----------------------	--------

### Disposable Pencils

(590-6113)	Hand Switching w/Push button	50/Box
(641-0630)	Hand Switching w/Push button, Holster	40/Box

### Electrode Cables

(904-0000)	Adult Split Return 2.8mm	50/Box
(394-9720)	Adult Solid Return 2.8mm	50/Box

### Grounding Pads

(800-7713)	Conductive Pads	50/Box
(794-3937)	Adult Pad w/o Electrode	50/Box

## Supercut Tungsten Needles

*(Similar to Colorado Needles)*

*Maintains sharpness for pinpoint accuracy during fine coagulation and dissection*

(600-7070)	Disposable 3.0cm	Each
(477-2130)	Disposable 4.5cm	5/Box
(651-2659)	Reusable 4.25cm	Each
(108-1945)	Disposable 4.5cm	5/Box
(477-2130)	Reusable 4.5cm	5/Box
(139-3121)	Disposable 3.0cm-Modified	5/Box

## Bipolar Forceps

(608-5636)	Reusable Straight 5½"	Each
(963-9838)	Reusable Straight 4½"	Each



DON'T FORGET YOUR **Bovie** ACCESSORY SUPPLIES FOR THE FOLLOWING PROCEDURES:

	FACE LIFT	EYE LIFT	NOSE JOB	BREAST PROCEDURES (Augmentation, Reduction, Reconstruction)	BODY CONTOURING	TUMMY TUCK	TUMORS/LESION REMOVAL
<b>Disposable Electrodes</b>	ES63 108-1945	ES01 682-1876  ES61 139-3121	ES37T 681-1153  or ES38T 681-1154	ES55T 681-1179  or ES01T 681-1134	ES60 104-5569	ES04T 681-1141	Shave incision then A804 241-6402
<b>Reusable Electrodes</b>	ES60R 600-7070	ES01R 439-9162	ES60R 600-7070 or ES01R 439-9162	ES01R 439-9162 or ES04R 108-3323	ES60R 600-7070	ES04R 108-3323	Shave incision then A811 681-0189
<b>Disposable Pencils</b>	ESP1 590-6113						
<b>Reusable Pencils</b>	ESPR 413-6953						
<b>Disposable Grounding Pads</b>	ESREC 904-0000						
<b>Reusable Grounding Pads</b>	Not recommended, but if at customer request, it would be the same for all A1204P 926-3702 w/1254C						
<b>Surgical Cauteries</b>	NA	If requested: AA01 590-1085	NA				If requested: AA01 590-1085
<b>Disposable Loops</b>	NA						ES22-8 111-9792



**Smoke Shark™ Smoke and Particle Remover**

Designed to be easy to use and extremely effective at smoke and particle removal at the operative site. Although it is designed for use with all electrosurgical generators, it is also excellent for use in controlling laser smoke.

**869-0060**

See page 24 for our exclusive air purification system from AtmosAir™  
Visit [www.henryschein.com/atmosair](http://www.henryschein.com/atmosair)

# spotlight on: recovery & healing

Approximately 10 million asymptomatic DVTs occur in the US per year.  
Source: Journal of Managed Care Pharmacy, 2007

## VENAFLOW ELITE

### WALK AWAY FROM RISK

MIMIC AMBULATION TO PREVENT DVT



108-5856

<b>Features:</b> Low profile, lightweight design	<b>Benefits:</b> Easily stored; easily transported
Compliance counter	Available with compliance counter to monitor and track compliance
Telescoping bed hanger	Extends to accommodate up to 3.5 inches
Battery option	Battery-installed units available upon request
Automatic cuff detection	Systems automatically identifies attached cuff configuration and adjusts pressure accordingly
Preset pressures & alarms	No-adjustments necessary
One pump for calf, thigh & foot cuffs	Provides for ease of use and minimizes inventory
Soft and breathable cuffs	Assists in increasing patient comfort and compliance

115-8712	Calf Cuff 19"	Pair
108-5403	Calf Cuff-X-Large	Pair
114-8778	Calf Cuff Elite	Pair
109-2563	Calf Cuff 19" Disposable	Pair

**AIRCAST**

It is estimated that anywhere from one in 5,000 to one in 100,000 administrations of general anesthesia with triggering agents will result in malignant hyperthermia.  
Source: ASAPS Annual Meeting 2008

## The EQUATOR® Convective Warming System

Controlled Convective Warming® in a compact design



114-0159

- Automatic temperature control
- Fast warmup and high air flow
- Quiet operation
- Compact and lightweight design
- Four-temperature selection display
- Large digital readout
- Multiple mounting options: floor, iv pole, or custom designed rolling cart with blanket storage basket

**smths medical**  
bringing technology to life

### Snugglewarm®

#### Convective Warming Blankets

- Made of soft comfortable fabric-like material—no hot plastic
- Strong and durable—resists tears, punctures and fluids
- Easy to manipulate, fold, and reposition for quick patient access
- Designed to conform to the patient's body—no billowing
- Latex-free
- Available in multiple configurations for all clinical applications

404-8380	Full Body Blanket	10/Box
404-5684	Upper Body Blanket	10/Box
404-8428	Lower Body Blanket	10/Box

Don't forget Revonto™: page 29

Pain pumps are designed to take care of pain locally by delivering a steady dose of lidocaine to the wound site through a ball and catheter system that is infused directly through the wound site to allow for the pump to work for several days, usually during the time frame where pain is most intense. The best part about pain pumps is that they offer post-op pain-management without the side effects of narcotics. No constipation, nausea, or headaches. Just localized relief that aids in your overall recovery process.

Item Code	Soaker Pain Pump	Mfg Catheters	Number	per Site	Dispense Rate	UOM
114-1602	Solace® 400mL x 4	5" Dual	S036	2mL/Hour	5/Case	
210-0021	Solace® 270mL x 2	5" Single	S034	2mL/Hour	Each	
116-4693	Solace® 400mL x 2	5" Single	S046	2mL/Hour	Each	
116-4692	Solace® 270mL x 4	5" Dual	S044	2mL/Hour	Each	

Don't forget Wound Drains: Page 31 & Lidocaine—Page 26-28



## Everything your practice needs when performing in-office treatments and procedures Stat Kit Z-1000®!

When time is critical, your ability to get the appropriate medications, devices and oxygen to the patient may be the difference between a life saved and a life lost.



AED and Oxygen  
Sold Separately  
page 22

449-0032

Contact your trusted advisor at Henry Schein for all your crash cart and critical care needs.



## COMPRESSION THERAPY FOR THE TOP 3 INVASIVE COSMETIC PROCEDURES

### HEAD AND NECK PROCEDURES

#### Universal Facial Garment –One Size

- Liposuction of chin, neck and cheeks
- Rhytidectomy (Facelift)

110-6716 White  
108-5668 Black



- Liposuction for chin, neck, and cheeks
- Otoplasty (Ear pinning)
- Rhytidectomy (Facelift)

Universal Facial Wrap  
One Size 10/Box:  
272-7587

#### Arm Compression Garment

For arm contouring including:

- Brachioplasty (arm lift)
- Liposuction



Item Code	Bicep Size	Shoulder Circum.	Distance
111-3418	Small	9"-10"	10"-12"
110-6717	Medium	10"-11"	12"-14"
110-6718	Large	11"-12"	14"-16"
113-5611	X-Large	12"-13"	16"-18"
113-5613	XX-Large	13"-14"	18"-20"

### LIPOSUCTION/BODY CONTOURING PROCEDURES



For Mid-Torso Procedures including:

- Liposuction of abdominal areas
- Abdominoplasty (Tummy Tuck)

#### Deluxe Abdominal Binder

9" 3-Panel	12" 4-Panel	
101-5804	101-1461	Small (30-45")
101-0547	101-7060	Large (46-62")
365-3241	272-6577	X-Large (62-75")

#### Personal Abdominal Binder

9"	10" (32-65")	12"	
838-3858	-	110-3042	S/M (20-42")
396-2453	109-9854	153-2312	M/L (36-65")

For Lower Body Procedures including:

- Liposuction around the buttocks, flanks, thighs, and lower abdomen
- SmartLipo™ and Cool Lipo™ procedures

#### High Waist Compression Girdle Above Knee Contact Closure with Zipper

Black	White	
272-0669	272-1574	Small (Hip Size: 33"-36")
272-9923	272-0463	Medium (Hip Size: 37"-40")
272-4638	272-2614	Large (Hip Size: 41"-45")
272-0312	272-8770	X-Large (Hip Size: 46"-50")
272-2395	272-5799	XX-Large (Hip Size: 51"-55")

### BREAST PROCEDURES

- Breast Augmentation
- Mastopexy (Breast Lift)
- Breast Reduction



#### Compression Bra

Sizes (Fits BCD Cups):

- To Stabilize Breast Implants

White	Beige	Black	
111-5219	111-5231	111-5225	32"
111-5220	113-5609	111-5232	34"
111-5221	111-5233	111-5227	36"
111-5222	111-5234	111-5228	38"
111-5223	111-5235	111-5229	40"
111-5224	111-5236	111-5230	42"
272-7748	272-5710	-	44"

#### Breast Augmentation Wrap

272-0564

One Size  
6/Box



#### Breast Bandeau

421-3058

One Size  
10/Box

*We sell dozens of post surgical compression options. Call your Sales Consultant for your unique requirements*

*Don't forget cold therapy: Page 31*

# sop for liposuction

## THE VASER LIPO<sup>®</sup> DIFFERENCE



A major advance in the application of ultrasonic technology to cosmetic procedures.

This system is specifically designed to preserve as much of the tissue matrix as possible, yet still remove the desired amount of fatty tissue.



The VASER Amplifier delivers precise amplitude control in pulsed or continuous mode.



The VASER Handpiece facilitates precise contouring in all anatomical applications.



Small diameter, solid-grooved probes come in a range of diameters for precisely breaking apart small volumes of fat in delicate areas or rapidly debulking larger volumes.



**CALL YOUR TRUSTED ADVISOR FROM HENRY SCHEIN**  
for more information or to request a demonstration.

Physician fees for Liposuction range between \$1,500 & \$7,500. Source: ASPS

## medela Vacuum Pump Systems

### Suction Assisted Liposuction

The Dominant 50 is a powerful and reliable hospital suction pump indicated for the aspiration and removal of surgical fluids, tissues (including bones), gases, bodily fluids, or infected materials from wounds of the patient during surgery.

- Powerful high-suction capacity
- Rapid buildup of vacuum
- Vibration-free and quiet
- Design; smooth surface, easy to handle, and clean
- Prized for its design, functionality, and ergonomics



Variol 18  
240-0022 AC/DC  
240-0021 AC



Basic 30  
240-0024 Portable  
240-0023 Mobile

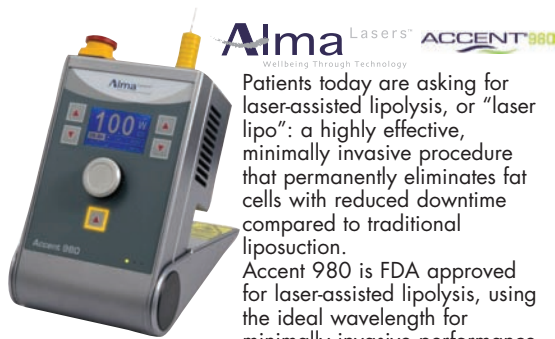


Dominant 50  
240-0020 Portable  
240-0019 Mobile

**We have a full line of vacuum systems  
for all surgical applications from Medela.**



## ADDING LASER TO LIPOLYSIS



Patients today are asking for laser-assisted lipolysis, or "laser lipo": a highly effective, minimally invasive procedure that permanently eliminates fat cells with reduced downtime compared to traditional liposuction. Accent 980 is FDA approved for laser-assisted lipolysis, using the ideal wavelength for minimally invasive performance.

- Procedure is done under local anesthetic.
- Safely and easily destroys fat cells.
- Provides simultaneous collagen stimulation for skin tightening and contouring, which reduces the need for a tuck or lift.
- Faster, easier, and less traumatic aspiration process.
- Less downtime and bruising for quick patient recovery: up and around in 24-48 hours.
- Produces high revenue and fuels demand for other laser procedures.

## FAT GRAFTING: TISSU-TRAN



- Sterile, closed, non-traumatic collection and filter of lipocytes
- No centrifuge or large investment

VOLUME	HSI #	FOR ALL VOLUME PROCEDURES:
235-0076	500cc	• Eyelids
235-0075	1000cc	• Lip
114-8041	2000cc	• Hands
115-4880	Mega 1500cc Decantation	• Face Body Contouring
		• Buttocks, Breast Reconstruction and Augmentation
		• Correction of Lipoplasty Deformities



## BD LUER-LOCK SYRINGES

987-5471	1cc	987-1962	3cc
987-0223	5cc	987-5914	10cc
987-7761	30cc	987-3800	60cc

## SURGICAL SETUP/PHARMACY

✓HENRY SCHEIN® Biopsy Punches—Sterile Blue Each			
900-4864	2.0mm	900-4865	2.5mm
✓HENRY SCHEIN® Scalpel Blades—Carbon Steel			
100-3149	#10	100-1259	#15
904-2207	Sharpie Permanent Markers		24/Pkg
258-9483	Epinephrine Inj Ampule 1:1000 1mL		5/Pkg
<i>Compare to Xylocaine®</i>			
248-0644	Lidocaine 1%		50 mL
248-8109	Sodium Bicarbonate Inj 8.4%, SDV		50 mL
153-4612	Sodium Chloride 0.9% Inj		1000 mL Bag

## SUCTION CATHETER

Quinton™ Perm Cath™ Dual Lumen Sterile			
638-5134	28cm		1/Case
109-3188	28cm		5/Case
SAFE-T-VAC™ Straight Pack Sterile			Each
890-4874	14FR	890-2107	18FR

## SUCTION CANISTER

Hi Flow™ with Aerostat® Filters and Float Valve Shutoff			
116-9264	1200cc		Each
196-2072	1200cc		Each
153-2694	1200cc		Each
681-5571	1200cc w/Connect Tubes		48/Case
632-0000	2000cc System w/18" & 6' Tubes		48/Case
960-1622	2000cc Hydrophobic Rigid System		48/Case
610-7779	2400cc		36/Case
115-0823	3000cc		36/Case
840-1510	3000cc		36/Case

Medela Disposable Canister Systems			Each
117-1295	1500cc	116-9269	2500cc

## SUCTION CANISTER LINER

153-7642	1000cc	153-6192	1500 cc
258-6054	2000cc	185-5317	3000 cc
117-1297	Medela Liner w/Solidifier (90 Bgs/Case)		1500 cc

## SUCTION/TUBING

109-8470	Aspiration 10'		10/Case
694-7539	1/4" x 10'		Each
119-2780	1/4" x 6'		Each
694-7539	1/4" x 10'		Each
988-8506	3/8" x 8'		10/Case
520-2102	3/16" x 6'		Each
914-8942	3/16" x 8'		10/Case
153-1588	3/16" x 9'		Each

## DISPOSABLE CANNULAS

Disposable Liposuction Handle with Cannula Sterile Each

Triport	4 Hole	24 Hole	
	387-0266	387-0264	3mm x 15cm
	387-0267	387-0265	3mm x 30cm
387-0268			4mm x 15cm
387-0269			4mm x 30cm

Disposable Liposuction Luer-Lock Cannula Sterile, Each

387-0280	Harvest large volume 4 Hole		3mm x 15cm
387-0281	Harvest small volume 24 Hole		3mm x 15cm
387-0287	Reinject—large volume 1 Hole, type II		3mm x 15cm
387-0274	Reinject—small volume 1 Hole, type II		16 Ga x 8cm

## REUSABLE CANNULAS - AUTOCLAVABLE

387-0288	Harvest—Biplane handle w/4 Hole large volume		3mm x 30cm
387-0289	Harvest—Biplane handle w/24 Hole small volume		3mm x 30cm
387-0286	Luer Lock Reinject 1 Hole, type II large volume		3mm x 15cm
387-0283	Luer Lock Reinject 1 Hole, type II small volume		16 Ga x 8cm

## CANNULA CLEANING BRUSHES

Specify Each:

117-2718	3mm	117-2719	4mm
149-5115	4 Micron	12/Box	

*Your Trusted Advisor can customize your cannula order based on your preferred style, length, diameter, and hole pattern.*

## POSITIONING

117-2815	Boppy® Bare Naked Pillow	2/Pkg
116-9458	Slipcover for Boppy® Pillow	48/Pkg
157-1640	Topifoam® Post Surgical Dressing 8" x 12"	30/Case

## Don't Forget Your Post Op Supplies:

Compression Therapy	Page 11
Hot/Cold Therapy	Page 31
Pharmacy	Pages 26-28
Recovery Room Devices	Page 10
Scar Management	Page 19
Surgical Wound Drains	Page 31
Surgical Dressing	Page 35
Underpads/Chux (Compare to HK Pads)	Page 30

# sop for laser therapy

**EXCLUSIVE!**



**Alma Lasers™**  
Wellbeing Through Technology

**features laser technology with over 70 FDA indications.**

For all the most popular and in-demand laser and aesthetic treatments, Alma Lasers has the systems to provide the reliable, safe and effective results your patients are looking for. Count on Alma Lasers for visibly dramatic improvements with minimal discomfort and downtime.

Procedure	Average Physician Fee Per Treatment*	Accent Elite	Accent XL	Accent 980	Accent	Harmony XL	Harmony XL 540 Module	Harmony XL 570 Module	Harmony XL 650 Module	Pixel CO <sub>2</sub>	Pixel ER	Soprano Xii	Soprano Xii NIR Module
Fractional Skin Rejuvenation	\$500-\$2,000									×	×		
Skin Photo Rejuvenation	\$300-\$500					×	×	×					
Skin Tightening	\$500-\$1,000				×	×							×
Vascular Pigmented Lesions	\$300-\$500					×							
Acne Treatment	\$150-\$300					×							
Pain-free Hair Removal	\$150-\$500								×				×
Treatment for Leg Veins	\$200-\$400					×							
Psoriasis/Vitiligo/Stretch Marks/Hypopigmentation	\$200-\$500					×							
Tattoo Removal	\$200-\$500					×							
Wrinkles, Acne Scars	\$500-\$2,000					×							
Pain Relief (Deep Dermal for Muscular Pain)	\$75-\$150												×
Body Contouring and Treatment for Lax Skin	\$500-\$1,000	×	×										
Fractional CO <sub>2</sub> Skin Rejuvenation	\$1,000-\$25,000									×			
Laser Lipolysis	\$2,000-\$6,000			×									

Don't forget all of your laser consumables including...

Disposable Apparel  
Page 30

Ultrasonic Gel & Wooden Applicators  
Page 30

Laser Eyewear Accessories  
Page 20

Sunscreen  
Page 15

Call your Sales Consultant to discuss a complete array of services.

✦ skin resurfacing



✦ skin rejuvenation



✦ hair removal



✦ body contouring





SYBARITIC Global Aesthetic Solutions Oxygen SkinCare Products	In Office Treatments								At-Home Regimen						HSI #	UOM	
	PIGMENTED LESIONS IPL	PHOTO FACIALS IPL	ACNE IPL	SKIN RESURFACING LASER Er:YAG	ACNE LASER Nd:YAG	SKIN REJUVENATION LASER Nd:YAG	MICRODERMABRASION*	CHEMICAL PEEL	Basic Skin	Sensitive Skin	Hyperpigmentation	Skin Rejuvenation	Acne Skin	Dry Skin			
<b>PRE-TREATMENT PREPARATION</b>																	
● Makeup Remover	●	●	●	●	●	●	●	●	●	●	●	●	●	●	●	113-4677	● 3.38 oz
● Milk Cleanser	●	●	●	●	●	●	●	●	●	●	●	●	●	●	●	113-4686	● 3.38 oz
● Foaming Gel Cleanser B			●		●								●			113-4688	● 2 oz
<b>POST-TREATMENT PROCEDURE</b>																	
■ Squalane Complex				■												113-4700	■ 1 oz
■ Liposome Complex					■											113-4685	■ .5 oz
■ Post Chemical Peel Serum								■			■					113-4192	■ 1.7 oz
<b>SKIN TYPES</b>																	
<b>BASIC</b> ■ Vitamin C Serum								■		■						113-4702	■ 1 oz
<b>SENSITIVE</b> ■ Sensitive Serum										■						113-4710	■ 1 oz
<b>HYPERPIGMENTATION</b> ■ Hyperpigmentation Serum	■										■					113-4706	■ 1 oz
<b>SKIN REJUVENATION</b> ■ W Serum			■						■			■				113-4709	■ 1 oz
<b>ACNE</b> ■ Acne Serum			■		■				■				■			113-4705	■ 1 oz
<b>EXFOLIATION</b> ●										●		●	●	●	●	113-4680	● 2 oz
<b>TONER</b> ● Gel Toner								●	●	●	●	●	●	●	●	113-4679	● 3.38 oz
<b>MOISTURIZER</b> ■ Antioxidant Cream		■										■				113-4682	■ 1 oz
■ Super Hydrating Cream														■		113-4691	■ 1 oz
■ Specialty B Cream			■									■				113-6079	■ 1 oz
<b>SUN PROTECTION</b>																	
○ Lightweight SPF 30	○	○	○	○	○	○	○	○	○	○	○	○	○	○	○	113-4690	○ 2 oz
● Total Sun Protection SPF 30	●	●	●	●	●	●	●	●	●	●	●	●	●	●	●	113-4678	● 2 oz

\*Post Procedure treatment regimen depends on skin type and treatment protocol

This chart details just a portion of the skincare treatment options available thru **Oxygen Botanicals** Skincare. In office treatments utilize professional products and at-home regimens use retail products which are different formulas. For a comprehensive selection, call your representative for a complete listing today.

© 2009 Sybaritic, Inc. All Rights Reserved. MS.5.0709.1.U



# sop for ultrasound and massage therapy

Estimated number of cellulite treatments performed in 2010 reached 1.14 million. Source: ASPS



**SOUND SURGICAL TECHNOLOGIES LLC**

**EXCLUSIVE!**

## Non-Surgical Body Shaping

The VASER® Shape device is an innovative, nonsurgical technology with specialized handpieces for ultrasound diathermy and zonal lymphatic massage. VASER Shape treatments can shape, firm and smooth the body by:

- Heating the fatty tissue layer
- Reducing the appearance of cellulite
- Improving lymphatic drainage and local blood circulation

## The Technology to Grow Your Practice

Adding VASER Shape to your treatment portfolio offers a full range of benefits to help build your new or existing body shaping practice.

- **Treatment Versatility.** Multiple handpieces and program settings allow you to tailor each treatment to the needs of your patient — from more aggressive therapy to treat local problem areas and cellulite, to a gentle postoperative session after liposuction or other invasive procedures.
- **Improved Patient Retention.** Research shows that the more often patients come to your office, the more likely they are to commit to additional treatments and procedures. Repeat VASER Shape treatments encourage deeper patient loyalty and provide increased opportunities to expose your patient base to new treatment options.
- **Practice Efficiency.** VASER Shape treatments can be performed by your staff members, leaving you free to handle other patients.

**Call your Trusted Advisor from Henry Schein to schedule a consultation.**

\* The VASER Shape System is FDA cleared for relief of minor muscle aches, pain and muscle spasms, temporary improvement in local blood circulation, and temporary reduction in the appearance of cellulite.

## Don't Forget Your Treatment Supplies

**HENRY SCHEIN®**  
**CLEAR ULTRASOUND GEL**  
 900-4352 8.5 oz.  
 900-4353 5 Liter



White Terry Cloth Robe	Each	
<b>153-6267</b>	Each	
CareStep™ Footies Women's, Blue	48/Case	Size 5-9
<b>130-5369</b>	48/Case	Size 5-9
Body Toaster Wrap	250/Case	52" x 84"
<b>116-8547</b>	250/Case	52" x 84"
Poly-Coated Apron	25/Pkg.	70" x 90"
<b>100-7483</b>	25/Pkg.	70" x 90"

## BIOTONE® ADVANCED THERAPY

Hypoallergenic, unscented, paraben-free. No nut oils, mineral oils or drying alcohols. Apricot, Grapeseed, and Sesame Oils to soothe and moisturize.

<b>106-7936</b>	Massage Cream	Gallon
<b>108-4795</b>	Massage Gel	Gallon
<b>106-8467</b>	Massage Lotion	Gallon
<b>108-4984</b>	Pump For Gallon Lotion	Each
<b>311-0041</b>	Massage Lotion	5 Gallon
<b>311-0040</b>	Pump For 5 Gallon Lotion	Each

## BIOTONE® CLEAR RESULTS MASSAGE OIL

Effortless workability with superior glide. Aloe and Jojoba Oils soften and moisturize.

<b>108-4796</b>	Gallon
-----------------	--------

## BIOTONE® DUAL PURPOSE MASSAGE CREAM

Arnica and Ivy Extracts help circulation and heal bruising. Quality performance with less reapplications. Gentle drag, excellent versatility, features of oil and lotion. Rich, thick texture, moisturizing, non-greasy finish.

<b>108-0327</b>	7 oz.
<b>108-4640</b>	Gallon
<b>311-0037</b>	68 oz.

## FREE-UP® MASSAGE CREAM

Free-Up is cost-effective because of its slow absorption rate, is hypo-allergenic and bacteriostatic, and does not contain beeswax.

<b>424-0055</b>	Scented	8 oz.
<b>424-0053</b>	Scented	16 oz.
<b>424-0056</b>	Unscented	8 oz.
<b>424-0057</b>	Unscented	16 oz.



Adults ages 31–45 accounted for 43% of the \$10.1 billion cosmetic procedures performed in 2010.

Source: ASPS

## Microdermabrasion



187-3608

### Features

- Patented 45-degree handpiece
- Stainless steel and titanium handpiece
- FDA cleared since 1993
- 90 mmhg
- Closed loop system
- Aluminum oxide system



## POWERPEEL® MICRODERMABRASION SYSTEMS

As the first FDA-cleared device launched in the United States, the PowerPeel® is the world leader in the field of microdermabrasion.

This system continues to be a popular choice in the physician, medspa and day-spa markets. Unit comes with enough crystals and tips to treat your first 30 patients. One-year warranty on parts and labor.

*Statistic: Gen X-ers ages 31–45 accounted for 43% of the \$10.1 billion cosmetic procedures performed in 2010. Source ASPS*

### Benefits

- Most effective delivery of crystals for the optimum peel with least patient discomfort.
- Durable and nonbreakable.
- Longest track record for safety and efficacy.
- Strongest machine on the market.
- Eliminates any risk of cross contamination.
- Less skin irritation than with mechanical abrasion.

## LED Light Therapy



## PowerLight™ System

A skin treatment that utilizes specific wavelengths of red, blue and infrared energy produced by Light Emitting Diodes (LEDs). The LEDs enhance cellular metabolism; accelerate the repair and replenishment of damaged skin cells; and gently lift and firm the skin. PowerLight™ LED Light Therapy stimulates fibroblast production, leading to the formation of new collagen. It is completely safe, noninvasive, and painless.

### Benefits include:

- Reduces blemishes
- Smooths texture of skin
- Increases circulation to skin
- Helps irregular pigmentation
- Gently lifts and firms the skin
- Minimizes fine lines and wrinkles
- Aids in restoring sun-damaged skin
- Reduces overall redness and flushing
- Restores natural cellular activity level

**Don't forget your treatment supplies and accessory products.**

### PowerPeel® Aluminum Oxide Crystals (Each Pound of Crystals Performs 5–6 Treatments)

187-0058	2 Lb.	Jar
187-0057	5 Lb.	Jar

### PowerPeel® Handpiece Tips

187-0069	Small	10/Pkg
187-0070	Medium	10/Pkg
187-0071	Large	10/Pkg

*(Each Tip Performs 10–15 Treatments; Can Be Cold Sterilized Between Patients; Prevent Cross-Contamination By Designating Tip To Individual Patients)*

### Dukal® Premium Wet \*-Wipes

*(Mildly Scented, Alcohol-Free Contains Aloe and Lanolin)*

933-2268	9" x 13"	64/Pkg
----------	----------	--------

### Kentek™ Disposables – White

290-9079	Microdermabrasion Eye Shields	50/Box
110-6211	Patient Mouthgard	10/Box

## OXYGEN PÜR

### Oxygen Serum



- Heals
- Regenerates
- Revitalizes
- Optimizes Cell Repair

Perfect for post microdermabrasion, waxing, chemical peels, IPL and laser treatments to soothe, heal and rehydrate the skin.

187-0053	OxygenPür Oxygen Serum	2.7 oz. Can
187-0055	OxygenPür Pomegranate	2.7 oz. Can

[www.henryschein.com/oxygenpur](http://www.henryschein.com/oxygenpur)

# sop for rejuvenation procedures



**CHEMICAL PEELS** **EXCLUSIVE!**

## Skin Refining System

70% glycolic acid, pH of 0.6 formulated with the clinically proven, patented anti-irritant Cosmederm-7.

### 187-0040 Complete Peel System

Includes:

- (1) 2 oz. Pre-Peel Conditioner
- (1) 2 oz. Refining Peel Formula
- (1) 2 oz. Peel Neutralizer
- (18) 0.33 oz. Post Peel Moisturizers
- (18) Double Tip Rayon Applicators

*Complete Peel System delivers 18-20 treatments.*

**187-0050** Peel System without Post Peel Moisturizers

**187-0049** Mini Peel System *(Delivers 3 Treatments)*

### Five Easy Steps:

1. Cleanse skin with mild soap-free cleanser.
2. Apply **Pre-Peel Conditioner** evenly over treatment area.
3. Apply **Refining Peel Formula** evenly and observe for redness or timer for 4-minute time limit\* (whichever comes first).
4. Apply **Peel Neutralizer**.
5. Apply **Post-Peel Moisturizer** and sunscreen.

### Treatment Protocol

- Most effective results in a series of six peels at two-week intervals
- Treatment time is increased based on client reaction
- Maximum treatment is 12 minutes
- A six peel series of treatments can be scheduled annually depending on individual client skin factors

**\*Complete Instructions and Ordering Information for Refinity Chemical Peel System and Home Care Solutions Found on [www.henryschein.com/refinity](http://www.henryschein.com/refinity)**



## CHEMICAL REAGENTS

### LIGHT PEEL: Glycolic Acid (AHA)

**110-2046** 30% 2 oz.

**110-2711** 35% 2 oz.

### LIGHT PEEL: Salicylic Acid (BHA)

**116-4664** 20% 4 oz.

**110-3408** 30% 4 oz.

### MEDIUM PEEL: Trichloroacetic Acid (TCA)

**291-0494** 15% 16 oz.

**483-9095** 20% 4 oz.

**874-4070** 30% 4 oz.

**938-4830** 35% 4 oz.

**907-5638** 85% 4 oz.

### DEEP PEEL: Phenol

**300-1566** 5% 16 oz.

**600-8610** 6% 4 oz.

### BLENDED PEEL: Jessner's Solution

**647-4464** 4 oz.



The **DUKAL Reflections™** Chem Kit includes all of the disposables you need to perform a routine chemical peel and aesthetic procedures.

**261-0144** 10 Kits/Case

*Kit contains: 2 mixing sticks, 2 cleansing cloths, 10 aesthetic wipes, 1 facial cap, 1 headband, 1 Atmosphere™ Breathing Extender, 2 glycolic applicators, 2 eye pads, 1 plastic dish, 1 plastic cup, 1 face mask, 1 pipette, 2 cotton balls, and 1 alcohol wipe.*

## DON'T FORGET YOUR TREATMENT SUPPLIES

### For Patient's Preparation

**187-0042** Refinity Purifying Cleanser 8 oz.

### Facial Cleansing Towelettes

**100-0987** Individually Wrapped 100/Box

### White Headband

**261-0135** Disposable 50/Pkg.

**113-9724** Disposable w/Velcro 250/Case

### Eye Shields For Patients With Sensitive Eyes

**110-6537** Stainless Steel 1 Pair

**290-9079** Disposable 50 Pair/Box

**115-2814** Black (Non-Laser) 1 Pair

### For Preparing Chemical Peels

**635-1676** Disposable Transfer Pipette 5cc 500/Box

**187-0052** Glycolic Applicator Double Tip 25/Pkg.

**114-6583** Glycolic Applicator 8" 100/Box

**267-0015** Graduated Plastic 1 oz. Cups 100/Pkg.

### Reusable Aprons

**100-7483** Poly Coated 70" x 90" 25/Pkg.

**100-7301** Transparent 42" Long Each

## FOR POST-PEEL PROTOCOL

### Reusable Cold Pack

**467-5687** Eye Mask 12/Case

**467-6589** Full Face Mask 12/Case

### Round Hot/Cold Pack

**467-9362** Pink 50/Case

**467-7628** Blue 50/Case

### Aquaphor® Advanced Therapy Healing Ointment

**911-0011** Unit Dose 0.9 Gm. 144/Box

**187-0053** OxygenPur® Oxygen Serum 2.7 oz. Each

### Oxygen Botanical™ Sun Protection 30 SPF

**113-4678** 2 oz. Bottle

**114-2221** 0.21 oz. 24/Box

**EXCLUSIVE!**

**TxSystems**  
**β-LIFTx**



**Afirm**® Cream is a retinol cream that reduces the appearance of fine lines making the skin appear smoother and firmer. **Afirm** delivers the skin improving benefits of retinol via the unique MICROSPONGE system.

**472-0639** 1X 15% Sensitive Skin 30 Gm. Tube  
**472-7317** 2X 30% Normal Skin 30 Gm. Tube  
**472-4091** 3X 60% Tolerant Skin 30 Gm. Tube

[www.henryschein.com/refinity](http://www.henryschein.com/refinity)

**EXCLUSIVE!**

**OXYGEN PÜR**

**Pomegranate**

The Only Chemical L-Free Oxygen Topical Moisturizer on the Market

A patented transdermal serum that passes through the skin and delivers clean encapsulated oxygen directly to the deeper layers of the dermis.

Recommended for all skin types, rapidly absorbed and non-greasy.



**187-0055** OxygenPür Pomegranate 2.7 oz. Can

[www.henryschein.com/oxygenpur](http://www.henryschein.com/oxygenpur)

**Lashes MD**

**EXCLUSIVE!**



All Natural Prescription-Free Formula

**187-0051**

*LashesMD consists of specific cytokines and botanicals to benefit lash and brow follicles*

- 30-day money back guarantee
- Specifically formulated and pH balanced to be non-irritating to eyes
- No need for prescription
- All study participants reported the appearance of fuller lashes
- Lashes are conditioned for a naturally fuller appearance
- Easy-to-use, once-a-day bedtime application
- No animal testing
- Prostaglandin-free
- Hormone-free
- Paraben-free
- Gluten-free
- Fragrance-free
- GMO-free; Sulfate-free
- Rich in botanicals

[www.henryschein.com/lashesmd](http://www.henryschein.com/lashesmd)

**REFINITY**  
Skin Solutions

**EXCLUSIVE!**

**REFINITY**™ Skin Solutions products let you experience the benefits of medical strength AHAs without the irritation commonly associated with anti-aging homecare products.

Our three exfoliating moisturizers are all formulated with the highest level of AHA 15% recommended for physicians as well as trademarked anti-irritant Cosmederm-7®.

**187-0042** Purifying Cleanser all skin types  
**187-0045** Protective Toner all skin types  
**187-0044** Rejuvenating Lotion for normal skin  
**187-0046** Rejuvenating Hydrogel for oily skin  
**187-0043** Rejuvenating Cream for dry skin



[www.henryschein.com/refinity](http://www.henryschein.com/refinity)

**EXCLUSIVE!**

**3M**

**Microchannel Skin System**

- Creates microchannels in the skin
- Can be used for pretreatment and skin prior to dermatological applications and procedures
- Disposable, cost-effective, single-patient use
- Well tolerated and safe

*Developed from a trusted source in dermatology*

**777-0460** Office pack 25 patches, 5 handles  
**777-0457** Patient pack 5 patches, 1 handle  
**777-0461** Handle pack 5 handles



[www.henryschein.com/microchannel](http://www.henryschein.com/microchannel)



**gel-care** by SILIPOS  
ADVANCED

**Clinically Proven Scar Therapy treats scars caused by:**

- injury
- burns
- surgery
- post-procedure

Henry Schein Item Code			5" x 6" Self Adhesive Sheet	1.5" Self Adhesive Discs	1.5" Self Adhesive Strips
			471-0005	471-0006	471-0007
			10/Pkg.	6/Pkg.	2/Pkg.
For doctors who are:	Or for customers who may purchase:	To be used for scars and prevent keloids resulting from:			
Dermis, Plastics	Mohs Kits	Mohs Surgery	X	X	
Dermis, Cosmetic Surgeons	Cryotherapy, Laser Accessories	Skin Tag Removal		X	
Dermatologists	Biopsy Punch	Skin Biopsy		X	
Plastics, Cosmetic Surgeons	Suture Kits	Trauma Scars	X	X	X

**471-0006** 1.5" Discs 6/Pkg.  
**471-0005** 5" x 6" Sheets 10/Pkg.  
**471-0010** 1.5" Strips 2/Pkg.



## VIRTUALLY PAINLESS HAIR REMOVAL THE SOPRANOXLI

Revolutionary pain-free Soprano treatments have redefined laser hair removal using the gold standard 810-nm diode and Alma's IN-Motion technology.

### The Soprano's virtually pain-free hair removal offers:

- Gold standard 810-nm laser diode provides reliable results
- Sapphire DualChill tip and optional Zimmer Cryo 5 air chiller adapter
- Permanent hair reduction of all pigmented hair on all skin types, including tanned skin
- IN-Motion technology for virtually pain-free hair removal
- Faster treatment times – huge 12x10 mm spot, up to 10 Hz repetition rate
- Low cost of ownership with no disposables required
- Easy to operate



**Alma** Lasers™  
Wellbeing Through Technology

**SOPRANO**  
FAMILY



## PROCEDURE TABLES

### Midmark 641 Barrier-Free™ Power Procedure Table

The Midmark 641 delivers maximum accessibility to your patient. Are you positioned to benefit from office-based procedures?



## CAN WE HELP YOU WITH THESE COMPLEMENTARY PRODUCTS?



### Ritter® Minor Surgery Lights

- 386-2145** 8' Each
- 386-3085** 9' Each
- 358-9468** Burton Wave Plus Magnifying Mirror, Each
- 386-0617** Ritter Classic Series Stool, Each
- 100-9541** Mayo Stand with Mobile Base, Each

## KENTEK PATIENT EYE PROTECTION

### Disposable Shields 25 Pair/Box

Specify:  
**290-9078** Laser  
**290-5443** IPL  
**290-9079** Microdermabrasion



### Reusable-Autoclavable

**113-2944** Protector Goggles  
**110-6537** Stainless Steel 1 Pair  
**114-1722** Stainless w/Handle 1 Pair

*We have a full line of professional laser eye protection. Ask your Sales Consultant for recommendation by laser.*



### Don't forget your accessory supplies...

- Blades and Scalpel Page 43
- Disinfecting Wipes Pages 38-39
- Disposable Shavers Page 31
- Exam Room Apparel Page 30
- Gloves Pages 34-35
- Ultrasound Transmission Gel Page 30



## CELESTA® DELUXE

The industry's favorite multi-purpose spa table, the Celesta® Deluxe, offers optimal ergonomics, electric efficiency, including tilt-feature, and exceptional comfort. With 15° tilt in either direction and push-button height, back rest and leg rest adjustments for easy and accurate positioning, you get loyal, contented clients and the ability to offer your most impressive menu of services. The rich wood base, with accent strips in the lifting columns and optional custom stain, adds elegance to any décor.



### Spa Furniture

Width: 29", 31" (79cm)

Length: 72" (183cm)

Height Range: 24"-35" (97cm)

Table Weight 265 Lb.

**OAKWORKS** Spa  
Authorized Dealer



### Facial Steamers

If you perform facials, we have a compact solution to fit your business needs.

Ask your trusted advisor for more information on Athena Beauty Systems from...

**ABS** Aesthetics

### Parabath® Parafin Heat System

An ideal partner for the spa center where frequent treatments are anticipated. Lightweight and portable, the unit is simple to set up and easy to use and maintain.

#### Features and Benefits for Spa:

- Clean, modern design accentuates Spa environment
- Curved arm rest provides comfort and focuses relief on the treatment area
- Helps relieve minor aches and joint pain
- Choose fresh citrus scented or unscented Parabath paraffin
- Deep-tank design easily fits hand, elbow, or foot treatment
- 5-year limited warranty
- Tested and proven in therapeutic applications for over 20 years



100-5308

Dimensions: 6"W x 6"D x 12"L

101-9677	Parabath® Wax	6 Lb.
636-9223	Parabath® Wax, Citrus scent	1 Lb.
101-8482	Plastic Liner for Parafin	100/Box
101-1909	Terri Cloth Boots	1 Pair
101-9498	Terri Cloth Mitts	1 Pair
250-5652	Mobil Stand for Parabath® Unit	1 Pair

**Thera-Band**

### Towel Cabi

110-6530

Dimensions: 18"W x 12.6"D x 11.5"H

One-year Warranty



### Mini Non-Electric Lotion Warmer

Keeps massage lotion and ultrasound gel at a comfortable temperature. Mini-Lotion Warmer hangs on the front of the Hydrocollator E-1 or E-2 heating units. (Bottles not included)

920-9479

**AUTOCLAVE: AUTOMATIC STERILIZATION**

**M11 UltraClave®**



*Don't forget to ask your Sales Consultant for replacement parts: gaskets, hoses, deodorizers, and panels.*

**386-8917**

- Fast and easy use for efficient instrument processing
- Reliability and effectiveness for infection control assurance
- Automatic opening door for efficient instrument drying
- Maximum space utilization and a complimentary design for your sterilization area

**For Smaller or Localized Sterilization Demands:**  
**386-7984** M9 UltraClave



**Powerheart AED G3 Semi-Automatic**



**110-2294**  
 The semi-automatic AED administers a defibrillating shock at the press of a button.

**110-2293** Adult AED G3 Automatic Defibrillator Pads Each

**AUTOCLAVE: VACUUM STERILIZATION**



**Elara 11 668-4581**

Pre-vacuum phase efficiently removes air, resulting in the full penetration of steam into wrapped, porous and hollow loads. The post-vacuum drying phase ensures complete drying of wrapped porous loads and hollow instruments. The Elara 11 offers a total of 7 programs: 5 cycle times and 2 test programs, which are the Bowie Dick Test, and the Vacuum Test.

**Don't Forget Your Treatment Supplies and Durable Goods**

<b>668-4306</b>	Chamber Brite Autoclave Cleaner	10/Box
<b>668-2024</b>	Clean & Simple Tablets	64/Box
<b>635-7227</b>	Alcohol Dispenser, Clear	9 oz.
<b>635-6246</b>	Alcohol Dispenser Push, Unlabeled	9 oz.
<b>100-0164</b>	Basin Emesis Plastic Rose, 8.5"	16 oz.
<b>100-0019</b>	Bottle Dropper Glass 1oz., Amber	12/Box
<b>100-3026</b>	Catheter Stainless Steel Tray, 8½" x 3" x 1½"	Ea.
<b>100-1282</b>	Catheter Stainless Steel Tray, 8.9" x 5" x 2"	Ea.
<b>100-4086</b>	Catheter Tray w/Cover, 12" x 8"	Ea.
<b>378-2255</b>	Dressing Jar Stainless Steel, 4" x 4"	Ea.
<b>100-7243</b>	Forceps Jar Stainless Steel, 4⅝" x 2⅞"	Ea.
<b>100-9646</b>	Instrument Stainless Steel Tray, 19" x 12½" x 6"	Ea.
<b>978-0091</b>	Kick Bucket Stainless Steel, 14" x 13½"	12 Qt.
<b>100-3001</b>	Kick Bucket & Stand	Ea.
<b>639-4718</b>	Mayo Stainless Steel Tray, 11" x 17½" x ½"	Ea.
<b>738-8387</b>	Medicine Cup, Stainless Steel	2 oz.
<b>100-0935</b>	Ointment Jar Plastic 1 oz. White	12/Box
<b>100-3896</b>	Ointment Jar Stainless Steel 2½" x 3⅞"	8oz.
<b>121-1523</b>	Ointment Jar Plastic ½ oz.	12/Bag
<b>100-2980</b>	Ointment Jar Plastic 2 oz. White	12/Box
<b>100-9499</b>	Ointment Jar Plastic 4 oz. White	12/Box
<b>100-4832</b>	Ointment Tin Metal ½ oz.	144/Box
<b>100-4641</b>	Sundry Jar Glass, Clear	5/Pkg.

**EXAM ROOM: LIGHTING**



**GREEN SERIES LIGHT PROMOTION**

Introducing the Welch Allyn Green Series™ Medical Exam Lights

**WHITER BRIGHTER GREENER**

With white, bright LEDs, Welch Allyn Green Series Medical Exam Lights provide you with superior light, helping you improve patient exams while reducing environmental impact. Green Series medical exam lights feature state-of-the-art LEDs that never require replacement, provide a whiter, brighter light than ever before, and use less energy than halogen. So now you can see true tissue color rendition while reducing your current cost of ownership.



**GS300 3 LED**  
 Minor Procedure Light

**114-2692** Mobile Stand  
**114-5632** Table/Wall Mount



**GS600 LED**  
 Exam Light

**566-0088** Mobile Stand  
**566-0089** Table/Wall Mount



**GS900 6 LED** Procedure Light

**114-6258** Mobile Stand  
**566-0097** Table/Wall Mount  
**116-1148** Ceiling Mount



**GS Exam Light IV**

**114-2547** GS Exam Light

**THE OPERON® D 760**  
ADVANCED, COST-EFFECTIVE DESIGN

OPERON is the fastest growing brand of surgical tables on the market because of the range of motion and superior imaging access they offer the surgical team. This adds up to increased patient positioning options which translate into greater comfort, productivity and safety for the surgical team.



- Patient weight capacity of 1000 Lb. in normal orientation and 500 Lb. in reverse orientation
- The widest lateral imaging window in the industry of 18.3 inches, consistent for the entire length of table top
- Intelligent diagnostics and integration capability
- Intuitive hand control with one button control for common positions
- Detachable leg section and back section, creating better site exposure and accessory One-touch Flex and Level function buttons
- Self compensating foot locks which ensure stability even on uneven floors
- Complete line of accessories available to accommodate virtually any surgical procedure



**HAUSTED®**  
PATIENT HANDLING SYSTEMS, LLC

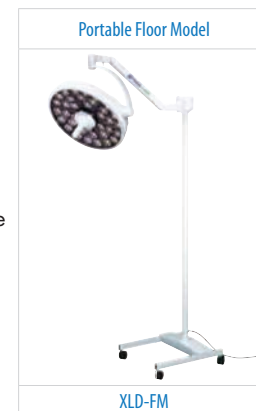
The Hausted® All Purpose Chair (APC) is a multi-position chair and stretcher intended for intra- and interdepartmental transport of patients within a health care facility. The APC can be positioned to allow for patient treatment, transport or recovery.



- Pre-induction, transport, treatment, and recovery can be performed on the same unit to improve case turnaround and streamline patient handling.
- Reduces staff time and prevents staff injury involved in transferring patient during various phases of care.

**MJ 1000 LED**

- **COOL**—emits very low heat
- **BRIGHT**—output rated at 65,000 lux (6,000 foot candles) at 4,300 degrees Kelvin color temperature
- **INNOVATIVE**—Five-stage dimming and on/off switch controlled from sterilizable
- **EFFICIENT "GREEN TECHNOLOGY"**
- **RELIABLE**—Lighting equipment (excluding replacement parts) has a three (3) year limited warranty
- **CONVENIENT**—No replacement bulbs or fuses necessary...lower overall maintenance costs
- **VERSATILE** Available in a variety of mounting options handle





**COOL-VIEW**



The **New Standard**  
in **Medical Illumination**

- NO MORE BULBS**  
LED's don't contain bulbs therefore there is no Mercury containing waste and no costs of replacement bulbs
- VIRTUALLY MAINTENANCE-FREE**
- ENERGY EFFICIENT**  
Up to 80% reduction in energy required over traditional lighting sources
- VIRTUALLY NO HEAT PRODUCED**  
Cool-View LEDs have significant heat reduction to other light sources
- LOWER OPERATION COST**  
Significant cost savings over other light sources with a low initial acquisition cost

**AtmosAir**  
SOLUTIONS

**AtmosAir Solutions**  
in Healthcare Environments



AtmosAir systems use nature's own cleaning method: Bi-Polar Ionization (negative and positive ions, or "activated oxygen clusters") interact with oppositely charged contaminants and reduce particulates, eliminate VOCs and odors, and reduce airborne bacteria and germs.

**AtmosAir Potential Benefits**

- Superior reduction of particles and spores that can trigger allergy and asthma symptoms
- Proven reduction of Staphylococcus and related MRSA, and other microbials
- Continuous 24/7 use offers enhanced protection against mold, bacterial, allergies, germs, etc.
- Elimination of distracting odors in waiting rooms, emergency admissions, patient rooms, cafeterias, food service areas, soiled linen areas, trash storage areas, etc.
- Potential energy savings through reduced outside make-up air
- Unmatched contaminant removal ability can allow enhanced IAQ without restrictions to airflow typical of filtration. Saves on HVAC operating costs



AtmosAir is committed to contributing to the greening of our environment with cleaner indoor air and reduced energy consumption.



**T400 Portable Unit**  
can handle to up 400 sq./ft.  
420-0005

**T400 Wall Mount**  
can handle to up 400 sq./ft.  
420-0004



**D100 in Duct System**  
that can handle up to 2,000 sq./ft.  
420-0006



**P2000 Portable Unit**  
can handle up 1,500 sq./ft. for very odorous areas.  
420-0007



**HemaClear®**  
an all-in-one surgical tourniquet...



- Exsanguinates.
- Applies a sterile stockinette.
- Creates an occlusion.
- Gives the surgeon a larger bloodless surgical field

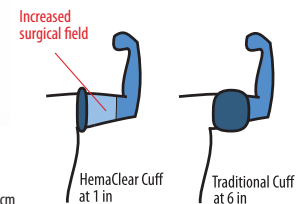
**Not only is it simple,**  
**it's cost effective!**

HemaClear eliminates the need for:

- Tourniquet Cuff
- Tourniquet Machine
- Esmarch Bandage
- Webril
- Stockinette



**Increased Surgical Field**



- 402-0008 Regular Forearm
- 402-0000 Small Pink Tourniquet, 14-28cm
- 402-0009 Medium Yellow Tourniquet, 24-40cm
- 402-0010 Large Brown Tourniquet, 30-55cm
- 402-0011 X-Large Black & White Tourniquet, 50-90cm



**Industry Standard**

	HemaClear	Industry Standard
Time	Less than 1 minute	15 minutes
Ease of Use	1 person, 1 device, just "grab + pull"	Additional staff and multiple devices
Effectiveness	100% blood removal, less blood loss, better visibility	Only 60% blood removal
Safety	100% sterile, reduces the chances of infection, low likelihood of complications	Non sterile, greater likelihood of infection + complications
Setting	Anywhere	Hospitals only
Footprint	One small device	Large capital equipment and multiple devices
Cost	1 Disposable	Capital equipment, maintenance, disposable wasted or time



# spotlight on: patient screening

## TOP HENRY SCHEIN® PRIVATE BRAND PATIENT SCREENING PRODUCTS



**One Step Pregnancy  
hCG Urine Cassette Test**  
900-4074 100/Box



**Urispec 11-Way**  
102-2285 100/Bottle



**One Step+ Pregnancy  
hCG Urine Dip Stick Test**  
900-4073 25/Box



**Finger Tip  
Pulse Oximeter**  
900-6368 Each



**Aneroid  
Sphygmomanometer**  
900-4827 Black Latex-Free

### Cetacaine Topical Spray

- Delivers precise, controlled spray
- Suppresses the gag reflex
- Jetco® autoclavable stainless-steel cannula firmly attaches to the spray bottle
- Onset within 30–60 seconds
- Typical duration of 30–60 minutes
- Long history of safety
- Malleable cannula shape can be modified to accommodate physician, anatomical, or procedural preference
- Up to 100 doses per bottle
- Pleasant tropical flavoring
- Several cannula lengths
- Only \$0.79 a dose



56 Gm Can  
635-2470

### Bayer HealthCare Bayer DCA 2000 HbA1c Kit



**Reagent  
Hemoglobin  
A1c Kit**  
147-8045 10/Pkg

### LTA® 360 Kit

Instills a jet spray of lidocaine hydrochloride solution into the interior of the larynx and trachea for local anesthesia in the unconscious patient just prior to endotracheal intubation. The LTA 360 Kit is preattached and distributes anesthetic in a circumferential spray pattern for producing rapid, effective topical anesthesia of the interior of the larynx and trachea.



Each kit contains (1) a sterile, anatomically curved plastic cannula with attached vial injector, and (2) a single-use vial prefilled with 4 mL of a 4% sterile aqueous solution of Lidocaine Hydrochloride Topical Solution, USP for adults or 5 mL of a 2% sterile aqueous solution for children.

**Lidocaine hydrochloride 4% (Adult) Solution/40 mg**  
146-6414 25/Case



### Diagnostics

#### CoaguChek XS Test Strips

Coagulation monitoring systems for patients on vitamin K antagonist therapy to monitor their PT/INR values. Using a small drop (8 µl) of capillary blood, it is easy to use and it provides a precise PT/INR result usually in less than 1 minute.



891-7593 48 Vials/Box



#### OneTouch Ultra Blue Strips



100/Box  
567-0076



**10 Panel Drug Screen**  
392-1003 25/Box

## TOP 5 BRANDED PHARMACEUTICALS IN AESTHETIC MEDICINE



**Kenalog-40® Inj**  
118-0825 10mL Vial  
118-0824 5mL Vial



**Suprane® Inhalant Liquid 99%**  
101-0566 240mL



**Botox® Cosmetic Inj Vial**  
377-6699 100U Vial  
498-2546 100U Vial



**Depo-Medrol® Inj**  
80mg/mL MDV  
908-3787 5mL Vial



**Lincocin® Injection 300mg**  
908-7376 10mL Vial

### ADRENERGICS

890-6471	Adrenalin Chlor Nasal Solution 1:1000U	30mL Bottle
111-1500	Doxapram HCl Inj 20mg/mL	20mL MDV
109-9438	Epinephrine Inj	30mL MDV
258-9483	Epinephrine Inj 1mL Amp	5/Pkg.
104-7057	Epinephrine Inj 1mL Amp	25/Box
103-0990	Epinephrine Inj 30mL MDV	5/Box
114-7033	Ephedrine Sulfate Inj 50mg/mL Amp 1mL	10/Pkg.
108-9109	Ephedrine Sulfate Inj SDV 50mg/mL	25/Box
345-1926	Epipen Adult Twin Pack 0.3mg	2 Cartridges
248-3658	Isuprel	1mL Amp
102-5584	Neostigmine Injection MDV 10mL	25/Box
516-0601	Proventil HFA Aerosol Inhaler 90mcg	6.7 Gm
248-9124	Pulmicort Inhaler Suspension	
	2mL 0.5mg/2mL	30/Box
930-9143	Ventolin HFA Inhaler	18 Gm

### ANTIBIOTICS

#### Antiseptics-Urinary Tract

111-7913	Methylene Blue 1% 1mL SDV	10/Box
102-8253	Methylene Blue 1% 1mL SDV	25/Box

#### Cephalosporins

114-5603	Cefazolin Inj Pwd 1 Gm/Vial 15mL SDV	25/Box
784-6100	Ceftriaxone Sodium for Inj 1 Gm. SDV	10/Box
115-3271	Cefazolin Inj PWD 1 Gm/Vial 15mL SDV	25/Box
784-8231	Ceftriaxone Sodium for Inj 500mg SDV	10/Box
111-6624	Cephalexin Capsules 500mg	100/Bottle
408-0041	Cephalexin Capsules 500mg	500/ Bottle
111-5169	Cephalexin Capsules 500mg	500/ Bottle
784-0052	Ceftriaxone Sodium for Inj 250mg SDV	10/Box
115-5331	Cephalexin Capsules 250mg	500/Bottle
784-7810	Ceftriaxone Sodium for Inj 1Gm SDV	
102-9301	Cephalexin Tablets 500mg	100/Bottle
785-6516	Rocephin Vial 1 Gm	15mL

### ANALGESICS: NON-NARCOTIC

675-8111	Alcohol Dehydrated 98% 5mL Amps	10/Box
104-9909	Ketorolac Inj IM 60mg/2mL SDV	25/Box
104-9908	Ketorolac Inj IM/IV 30mg 1mL SDV	25/Box
248-0189	Lusedra Inj 3.5mg/mL 30mL SDV	8/Pkg.
108-8436	Tramadol HCl Tablets 50mg	500/Bottle

### CARDIOVASCULAR

258-3854	Brevibloc Inj 10mg/mL	10mL SDV
248-0407	Hydralazine 20mg/mL	SDV 1mL
104-9895	Hydralazine Injection SDV 1mL 20mg/mL	25/Box
881-1045	Hydralazine HCl Inj SDV 1mL 20mg/mL	25/Box
318-0383	Lovenox 40mg/.4mL Inj	10/Pkg.
424-0049	Sotradecol Inj Vial 2mL 30mg mL 3%;	5/Pkg.
424-0048	Sotradecol Inj Vial 2mL 10mg mL 1%	5/Pkg.
110-8016	Thrombin-JMI 5,000U	5mL

### ANTIVIRAL

110-0494	Acyclovir Tablets 400mg	500/Bottle
118-1328	Famciclovir Tablets 500mg	30/Bottle
254-9139	Famvir Tablets 500mg	30/Bottle
124-3813	Valtrex Caplets 1 Gm.	30/Bottle
248-5838	Valtrex Caplets 500mg	30/Bottle
272-5614	Valtrex Unit Dose Caplets 500mg	100/Bottle
110-2573	Viread Tablets 300mg	30/Bottle

### PENICILLIN/TETRACYCLINE

114-5373	Amoxicillin Capsules 500mg	100/Bottle
111-9187	Amoxicillin/Clavul Tablets 500/125mg	20/Bottle
111-9131	Azithromycin Tablets Dose Pack 250mg	3x6/Pkg.
321-7671	Bicillin CR 1.2MU 2mL Syringe	10/Pkg.
321-7445	Bicillin LA 1.2MU 2mL Syringe	10/Pkg.
321-1663	Bicillin LA 2.4MU 4mL Syringe	10/Pkg.
375-0002	Doxycycline 100MG SDV for Inj	10/Box
745-5874	Pfizerpen-G IV Inj Vial 5M U	10/Box

### ANABOLIC STEROIDS

258-0115	Androgel Packet 1% 5 Gm	30/Box
258-0114	Androgel 1% Gel Pump	2x75 Gm
908-0963	Depo-Testosterone Inj 200mg/mL	10mL MDV
558-5723	Propecia Tablets 1mg	90/Bottle
376-8895	Propecia Tablets 1mg	30/Bottle
908-0963	Testosterone Cypionate Inj 200mg/mL	10mL Vial
104-5953	Testosterone Cypionate Inj 200mg/mL	10mL MDV

### ANESTHETIC AGENTS-TOPICALS

635-0065	Cetacaine Topical Gel	32 Gm
635-2470	Cetacaine Topical Spray	56 Gm Can
761-1189	Ethyl Chloride Fine Glass	4/Box
761-8856	Ethyl Chloride Fine Spray Glass	12/Case
248-0104	Ethyl Chloride Fine Spray	Glass
761-9264	Ethyl Chloride Medium Glass	4/Box
248-0103	Ethyl Chloride Medium Spray	Glass
916-8537	Hurricane Topical Spray	2oz Can
916-8037	Hurricane Topical Spray Kit w/200 Tubes	Each
104-3378	Lidocaine HCl Jelly 2%	30mL Tube
472-8261	Lidocaine HCl Viscous Solution 2%	100mL Bottle
108-4108	Lidocaine Jelly Urojet 10mL 2%	25/Pkg.
104-7592	Lidocaine Ointment 5%	50gm
201-3928	Lidocaine Ointment Tube 5%	1 1/4oz
114-5405	Lidocaine Topical Solution 4%	50mL Bottle
104-6587	Lidocaine w/Prilocaine Cream	30 Gm Tube
304-7421	Lidoderm Patches 5%	30/Box
728-2359	LMX4 Lidocaine Cream 4%	30 Gm Tube
728-4306	LMX4 Lidocaine Cream 4%	15 Gm Tube
728-7382	LMX4 Lidocaine Cream 4% +Tegderm 5 Gm.	5/Pkg.
7282927	LMX5 Lidocaine Cream 5%	30 Gm Tube
761-0465	Pain Ease Mist Spray	3.5oz Can
312-2658	Topex Topical Metered Spray w/25 Tips	2oz Can
150-0125	Xylocaine Jelly 2%	30mL Tube
150-0047	Xylocaine Topical Solution 4%	50mL Bottle

## TOP 5 GENERIC PHARMACEUTICALS IN AESTHETIC MEDICINE

Compare to  
**Diprivan®**

**Propofol Inj**

10mg/mL  
**116-5903** 20mL SDV 10/Box  
**248-6832** 20mL SDV 5/Box



Compare to  
**Xylocaine®**  
w/Epinephrine  
**Lidocaine 1%  
w/Epi Inj:**

**104-7099** 50mL MDV 25/Box  
**248-7453** 50mL MDV



Compare to  
**Xylocaine®**

**Lidocaine HCl Inj**

50mL MDV 1%  
**104-6817** 25/Box



**Bacitracin  
Powder For Inj**  
50000u  
**908-8136** Vial



**Revonto™**  
(Dantrolene Sodium)  
Inj  
20mg SDV  
**115-5107** 6/Box



### ANESTHETIC AGENTS: SYSTEMIC

<b>890-7008</b>	Brevital Injection MDV 500mg	50mL MDV
<b>856-7167</b>	Carbocaine 3% Plain	50/Box
<b>150-0058</b>	Citanest 4% Plain	50/Box
<b>150-5173</b>	Diprivan SDV 20ml 10mg/mL	2x25/Ca
<b>108-4262</b>	Isoflurane Liquid Inhalation 99.90%	250mL/Bottle
<b>856-4621</b>	Lidocaine HCl 2% & Epinephrine 1:100M	50/Box
<b>465-0015</b>	Lidocaine HCl 2% w/ Epinephrine 1:50	50/Box
<b>465-1205</b>	Lidocaine HCl 2% w/Epinephrine	50/Box
<b>248-8978</b>	Lidocaine w/Epi FTV Non-Return 0.50%	50mL FTV
<b>856-2130</b>	Marcaïne 0.5% w/ Epinephrine	50/Box
<b>110-1262</b>	Propofol Inj 10mg/mL w/o Sulf 50mL SDV	20/Pkg.
<b>116-5901</b>	Propofol Inj SDV 100mL 10mg/mL	10/Box
<b>228-8210</b>	Septocaine Cartridge 4% w/Epi 1:100M	50/Box
<b>104-9687</b>	Sevoflurane Inhalation 250mL/Bottle	6/Box
<b>403-5745</b>	Ultane Anesthesia Liq Inh 100% 250ml	Bottle
<b>150-0003</b>	Xylocaine 2% W/Epinephrine 1:100M	50/Box
<b>150-0073</b>	Xylocaine w/Epi MDV 50ML 1%	25/Pkg.

### ENDROCRINE AGENTS

<b>114-8668</b>	Betamethasone Combo Inj Susp 6mg/mL	5mL MDV
<b>516-0266</b>	Celestone Soluspan Inj MDV 6mg	5mL MDV
<b>908-3069</b>	Depo-Medrol Inj 20mg/mL	5mL MDV
<b>908-9783</b>	Depo-Medrol Inj 40mg/mL	5mL MDV
<b>908-1188</b>	Depo-Medrol Inj MDV 40mg/mL	10mL MDV
<b>908-7913</b>	Depo-Medrol Inj MDV 5mL 80mg/mL	25/Box
<b>102-4486</b>	Dexamethasone Sod Phos 4mg/mL	30mL MDV
<b>138-6758</b>	Dexamethasone Sod Phs SDV 10mg/mL	25x1mL
<b>309-8566</b>	Genotropin MiniQuick PFS 0.6mg	7/Box
<b>196-8300</b>	Kenalog-40 Inj 40mg/mL	1mL SDV
<b>202-7483</b>	Novarel Inj 10,000u MDV	10mL MDV
<b>558-5723</b>	Propecia Tablets 1mg	90/Bottle
<b>382-0015</b>	Solu-Medrol 2mL Act-O-Vial 125mg	25/Pkg.
<b>382-0014</b>	Solu-Medrol 1mL Act-O-Vial PF 40mg	25/Pkg.
<b>908-0963</b>	Testosterone Cyponionate Inj, 200 mg/mL	10mL Vial

### DERMAL FILLERS

<b>109-8613</b>	Juvederm Ultra Inj Gel Syringe	2/Box
<b>377-0005</b>	Juvederm Ultra Plus XC Gel Syringe	2/Box
<b>377-0004</b>	Juvederm Ultra XC Gel Syringe	2/Box
<b>109-8652</b>	Juvederm Ultra Plus Gel Syringe	2/Box

### GASTRO-INTESTINAL

<b>248-9911</b>	Aciphex Tabs 20mg	30/Bottle
<b>631-2207</b>	Anzemet Inj Vial 0.625mL 12.5mg	6/Box
<b>108-4264</b>	Glycopyrolate Inj SDV 2mL 0.2mg/mL	25/Box
<b>114-6842</b>	Metoclopramide 2mL Vial 5mg/mL	25/Box
<b>114-5357</b>	Ondansetron Inj SDV 2mL 2mg/mL	5/Pkg.
<b>114-5412</b>	Ondansetron Inj 2mg/mL	20mL MDV
<b>375-5030</b>	Robinul Injection MDV 20mL 0.2mg/mL	10/Box
<b>248-2592</b>	Transderm Scop 1.5mg	4/Box
<b>106-0237</b>	Transderm Scop Patch	10/Box

### ANTIBIOTICS: MISCELLANEOUS

<b>908-0016</b>	Bacitracin Powder For Inj 50,000U	10/Box
<b>118-2006</b>	Ciprofloxacin HCl Tablets 500mg	100/Bottle
<b>908-0083</b>	Cleocin Phosphate Inj 2mL	25/Box
<b>104-6899</b>	Clindamycin Phos Inj 150mg/mL 2mL SDV	25/Box
<b>104-6972</b>	Clindamycin Phos Inj 150mg/mL 4mL SDV	25/Box
<b>248-4843</b>	Clindamycin Phos Inj 150mg/mL	4mL SDV
<b>104-7000</b>	Erythromycin Lactob Inj 500m 10mL	10/Box
<b>258-2214</b>	Gentamicin Inj 40mg/mL	20mL MDV
<b>104-9944</b>	Gentamicin Sulfate Inj 40mg/mL 2mL FTV	25/Box
<b>113-1602</b>	Gentamicin Sulfate Inj 40mg/mL 20mL MDV	25/Box
<b>114-2773</b>	Gentamicin Ophthalmic Solution 0.30%	15mL/Bottle
<b>248-9959</b>	Gentamicin Sulfate Inj 40mg/mL	2mL SDV
<b>954-1006</b>	Levaquin Inj Vial 500mg	20mL MDV
<b>110-4363</b>	Polymyxin-B Sulfate Inj 500MU 10mL	10/Box
<b>104-9621</b>	Vancomycin HCl Addvant 1Gm Vial	10/Box
<b>104-6847</b>	Vancomycin HCl FTV Lyoph Pwd 1Gm 30mL	10/Box
<b>104-6842</b>	Vancomycin HCl Lyphol'd Pwd 500mg 10mL FTV	10/Box

### MUSCLE RELAXANTS

<b>107-7389</b>	Atracurium Besyl Inj 10mg/mL 5mL SDV	10/Box
<b>115-7589</b>	Dantrium IV 20mg 70mL/Vial	6/Box
<b>248-8701</b>	Nimbex Inj 10mL Vial MDV 2mg/mL	10/Box
<b>546-4877</b>	Robaxin Inj SDV 10mL 100mg/mL	25/Pkg.
<b>118-2020</b>	Rocuronium Bromide 10mg/mL 10mL MDV	10/Pkg.
<b>118-2049</b>	Rocuronium Bromide 10mg/mL 5mL MDV	10/Pkg.
<b>104-6965</b>	Succinylcholine Inj 10mL MDV 20mg/mL	25/Box
<b>115-6235</b>	Vecuronium Bromide SDV 25mL 20mg/mL	10/Pkg.
<b>114-0420</b>	Vecuronium Bromide 10mg 10mL SDV	10/Pkg.
<b>516-0001</b>	Zemuron Inj MDV 5mL 10mg/mL	10/Box

### SEDATIVES

<b>248-2391</b>	Lunesta Tablets 3mg	100/Bottle
<b>102-8913</b>	Midazolam HCl Inj 5mg/mL, 10mL MDV	10/Box
<b>104-6569</b>	Midazolam HCl Inj 1mg/mL, 10mL MDV	10/Box
<b>104-5801</b>	Midazolam HCl Inj 1mg/mL, 2mL MDV	25/Box
<b>258-0101</b>	Midazolam HCl Inj 1mg/mL, 2mL SDV	25/Box
<b>118-2045</b>	Midazolam HCl Inj 5mg/mL, 10mL MDV	10/Box
<b>118-2040</b>	Midazolam HCl Inj 1mg/mL, 10mL MDV	10/Box

### NARCOTICS

<b>729-0027</b>	Alfenta 500mcg 5mL Amps	10/Box
<b>110-0689</b>	APAP/Codeine 300/30mg Tablets	100/Bottle
<b>114-5800</b>	APAP w/Codeine Tablets 60mg	500/Bottle
<b>121-7793</b>	Buprenex 0.3mg 1mL Amps	5/Box
<b>108-4825</b>	Buprenorphine HCl Inj 0.3mg/mL Syringe	10/Box
<b>111-7892</b>	Cocaine Topical Solution 4%	4mL Bottle
<b>258-0629</b>	Demerol HCl Inj 5% 50mg	30mL MDV
<b>258-0601</b>	Demerol HCl 50mg/mL 1mL Carpuject	10/Box
<b>258-7601</b>	Demerol HCl 75mg 1mL Carpuject	10/Box
<b>258-0639</b>	Demerol Inj 50mg/mL 1mL Amps	25/Box
<b>104-6530</b>	Fentanyl Citrate Inj 50mcg/mL 2mL Amps	10/Box
<b>104-6535</b>	Fentanyl Citrate Inj 50mcg/mL 5mL Amps	10/Box
<b>104-6541</b>	Fentanyl Citrate Inj 50mcg/mL 5mL SDV	25/Box
<b>104-6538</b>	Fentanyl Citrate Inj nj 50mcg/mL 2mL SDV	25/Pkg
<b>104-9391</b>	Hydrocodone/APAP 10/325mg Tablets	100/Bottle
<b>104-6876</b>	Naloxone HCl Inj 0.4mg/mL 1mL SDV	10/Box
<b>629-0004</b>	Meperidine Injection 100mg/mL 1mL SDV	25/Box
<b>248-9568</b>	Naloxone Inj 0.4mg/mL	1mL SDV
<b>258-7295</b>	Naloxone HCl Inj 0.4mg/mL	10mL MDV



## OUR MOST POPULAR HOSPIRA PRODUCTS FOR AESTHETICS



ITEM CODE	ITEM DESCRIPTION	SIZE
104-6963	Bupivacaine HCl 0.25% 50mL MDV	25/Box
104-6883	Bupivacaine HCl 0.50% 50mL MDV	25/Box
114-7523	Bupivacaine HCl Vial 0.50% 30mL	25/Box
110-6507	Bupivacaine HCl w/Epi Vial 0.50% 1:200m 50mL	25/Box
631-1626	Carbocaine Inj 1%	50mL MDV
258-1385	Carbocaine Inj 2%	50mL MDV
104-6560	Diazepam 5mg/mL 2mL Carpuject Syringe	10/Box
109-7361	Diazepam Inj 5mg/mL 10mL MDV	10/Box
104-7057	Epinephrine Inj AMP 1:1000 1mL SDV	25/Box
104-6874	Ketamine HCl Inj 50mg/mL 10mL MDV	10/Box
104-9909	Ketorolac Inj IM 60mg/2mL 2mL SDV	25/Box
110-3839	Lidocaine Preservative Free 1% 30mL	25/Pkg
104-6817	Lidocaine HCl Inj 1% 50mL MDV	25/Box
104-9843	Lidocaine HCl Inj 2% 50mL MDV	25/Box
104-6822	Lidocaine w/Epi Inj 1% MDV 30mL	25/Box
104-6882	Lidocaine w/Epi Inj 0.5% 1:200m MDV 50mL	25/Box
104-7099	Lidocaine w/Epi Inj 1% 1:100m MDV 50mL	25/Box
104-6855	Lidocaine w/Epi Inj 2% 1:100m MDV 30mL	25/Case
104-6867	Lidocaine w/Epi Inj 2% 1:100m MDV 50mL	25/Box
258-7402	Marcaine Inj 0.25% Flip Top Vial	50mL MDV
631-2615	Marcaine Inj 0.5%	50mL MDV
631-2847	Marcaine w/Epi 0.25%	50mL MDV
258-9815	Marcaine w/Epi Inj 0.5%	50mL MDV
104-6816	Normal Saline 0.9%	1000mL
104-6823	Sodium Bicarbonate Inj 8.4% 50mL SDV	25/Box
104-6851	Sodium Chloride Inj Bacteriostatic 0.9% 10mL MDV	25/Box
104-9943	Sodium Chloride 0.9% MPF 10mL	25/Box
104-8583	Sodium Chloride Inj 0.9% 30mL MDV	25/Box
104-6989	Sodium Chloride Inj 0.9% 50mL SDV	25/Box
258-2168	Sodium Chloride Irrigation 0.9%	250mL
104-7765	Bacteriostatic Water for Inj 30mL-Sterile	25/Pkg

The first and only IV formulation of acetaminophen in the US



### Dosing of OFIRMEV for adults, adolescents, and children ≥2 years old<sup>†</sup>

Age group	Dosing interval	Maximum single dose	Maximum total daily dose of acetaminophen (by any route)
Adults and adolescents (≥13 years old) ≥50 kg	Q6h	1000 mg (100 mL)*	4000 mg
Adults and adolescents (≥13 years old) <50 kg	Q6h	Weight-based dose: 15 mg/kg	75 mg/kg
Children ≥2 to 12 years old			

\* Each mL contains 10 mg of OFIRMEV.  
† Maximum daily dose up to 3750 mg.

10mg/mL, 100mL  
24/Case  
**248-0337**

#### Important Safety Information

OFIRMEV should be administered only as a 15-minute infusion. Do not exceed the maximum recommended daily dose of acetaminophen. Administration of acetaminophen by any route in doses higher than recommended may result in hepatic injury, including the risk of severe hepatotoxicity and death. OFIRMEV is contraindicated in patients with severe hepatic impairment, severe active liver disease or with known hypersensitivity to acetaminophen or to any of the excipients in the formulation. Acetaminophen should be used with caution in patients with the following conditions: hepatic impairment or active hepatic disease, alcoholism, chronic malnutrition, severe hypovolemia, or severe renal impairment.

## NEW OFIRMEV<sup>™</sup> (acetaminophen) injection

### Improved pain relief, reduced opioid consumption<sup>†</sup>

- Significant pain relief\*<sup>1</sup>
  - OFIRMEV 1 g + PCA morphine demonstrated significant pain relief vs placebo + PCA morphine ( $P < 0.05$  over 6 h)<sup>1</sup>
  - OFIRMEV 1 g + PCA morphine showed greater reduction in pain intensity over 24 h (SPID24)<sup>1</sup> compared to placebo + PCA morphine ( $P < 0.001$ )<sup>2</sup>
- Reduced opioid consumption\*<sup>1</sup>
  - OFIRMEV 1 g + PCA morphine significantly reduced morphine consumption vs placebo + PCA morphine (–46% over 6 h,  $P < 0.01$ ; –33% over 24 h,  $P < 0.01$ )<sup>1</sup>
  - The clinical benefit of reduced opioid consumption was not demonstrated
- Improved patient satisfaction\*<sup>1,2</sup>
  - OFIRMEV 1 g + PCA morphine significantly improved patient satisfaction vs placebo + PCA morphine at 24 h ( $P = 0.004$ )<sup>1,2</sup>
- The first IV antipyretic approved for children ≥2 years old<sup>3</sup>
  - Significant fever reduction 30 minutes after initiating infusion<sup>2</sup>
- Established safety profile and well tolerated in clinical trials<sup>1-3</sup>

### OFIRMEV is indicated for the:

- Management of mild to moderate pain
- Management of moderate to severe pain with adjunctive opioid analgesics
- Reduction of fever
- Minimum dosing interval is Q4h
- For instructions regarding Q4h dosing, please see full Prescribing Information
- No dose adjustment is required when transitioning to oral acetaminophen in adults and adolescents
- OFIRMEV should be administered only as a 15-minute infusion. Administer only as directed.
- Do not exceed the maximum daily dose of acetaminophen

Discontinue OFIRMEV immediately if symptoms associated with allergy or hypersensitivity occur.

Do not use in patients with acetaminophen allergy.

The most common adverse reactions in patients treated with OFIRMEV were nausea, vomiting, headache, and insomnia in adult patients and nausea, vomiting, constipation, pruritus, agitation, and atelectasis in pediatric patients.

The antipyretic effects of OFIRMEV may mask fever in patients treated for postsurgical pain.

Please see accompanying full Prescribing Information.

\*Randomized, double-blind, placebo-controlled, single- and repeated-dose 24-h study (n=101). Patients received OFIRMEV 1 g + PCA morphine or placebo + PCA morphine the morning following total hip or knee replacement surgery. Primary endpoint: pain relief measured on a 5-point verbal scale over 6 h. Morphine rescue was administered as needed.

<sup>1</sup>SPID24= sum of pain intensity differences, based on VAS score, from baseline, at 0 to 24 h.

<sup>2</sup>Subjects were asked to evaluate the study treatments, overall, using a 4-point categorical scale.



## Henry Schein **creams & ointments** for all your skin care needs



### **BACITRACIN ZINC OINTMENT USP**

Active: Bacitracin Zinc 500 Units  
Helps prevent infection in minor cuts and burns.

### **HYDROCORTISONE CREAM 1% USP**

Active: Hydrocortisone USP 10 mg.  
Compare Active Ingredient to Cortaid®  
Itch relief for minor skin irritations, inflammation and rashes.

### **TRIPLE ANTIBIOTIC OINTMENT USP**

Actives: Bacitracin Zinc 400 Units, Neomycin Sulfate 5 mg.,  
Polymyxin B Sulfate 5,000 Units  
Compare Active Ingredients to Neosporin®  
Helps prevent infection in minor cuts and burns.

### **A&D OINTMENT**

Active: White Petrolatum  
Temporarily protects minor cuts, scrapes, burns and cracked lips.

### **WHITE PETROLATUM**

Active: White Petrolatum  
Compare Active Ingredient to Vaseline Petroleum Jelly®  
Temporarily protects minor cuts, scrapes, burns and cracked lips.



<b>900-4789</b>	Bacitracin .9 Gm. Packet	144 per box
<b>900-4788</b>	Triple .9 Gm. Packet	144 per box
<b>900-4790</b>	A&D 5 Gm. Packet	144 per box
<b>900-4791</b>	Petrolatum 5 Gm. Packet	144 per box
<b>900-4971</b>	Bacitracin 1 oz. Tube	Each
<b>900-4972</b>	Triple 1 oz. Tube	Each
<b>900-4787</b>	Hydrocortisone 1 oz. Tube	Each

**HENRY SCHEIN**®  
BRAND PRODUCTS

## **Revonto™** (dantrolene sodium for injection)

### A Revolution Built on Science

Introducing Revonto™ (dantrolene sodium for injection) from US WorldMeds for the treatment of malignant hyperthermia.

Our dedicated team of scientists developed a revolutionary breakthrough that results in dramatically reduced reconstitution time.

Revonto™ is ready to administer when shaken for 20 seconds or until the solution is clear.



**Revonto™**  
(Dantrolene Sodium)  
20MG SDV  
115-5107 6/Box

See full prescribing information at [www.revonto.com](http://www.revonto.com)

# spotlight on: disposable exam room

## PATIENT TREATMENT SUPPLIES

### Dukal™ Reflections™ Spa Apparel

Backless Bras-Black		10 Bags/Pkg.
Specify:		
<b>261-0130</b>	Small/Medium	<b>261-0134</b> Large/X-Large
<b>Bikini Panty</b>		25 Bags/Pkg.
Specify:		
<b>261-0129</b>	Black	<b>261-0128</b> White
<b>Thongs Panty</b>		25 Bags/Pkg.
Specify:		
<b>261-0127</b>	Black	<b>261-0126</b> White
<b>109-3129</b>	Boxer Shorts Black, Unisize	50/Box

### Tidi™ Bikini Brief Nonwoven

<b>895-0014</b>	Blue	200/Case
-----------------	------	----------

### Tidi™ Exam Shorts Blue

<b>967-8109</b>	Medium	100/Case
<b>895-7343</b>	Large	100/Case
<b>895-3575</b>	X-Large	100/Case

### HENRY SCHEIN® Disposable Plastic Headrest Cover

11½" x 10" Regular		250/Box
Specify:		
<b>112-4873</b>	White	<b>112-4871</b> Clear
<b>101-7104</b>	10" x 10" White Regular	500/Box

### HENRY SCHEIN® Pillowcase

<b>104-9206</b>	Tissue/Poly/Tissue 30" x 21"	100/Case
<b>104-9206</b>	Fabricel 30" x 21"	100/Case
<b>116-9458</b>	Slipcover for Boppy Pillow	48/Pkg

### Disposable Headband

<b>261-0135</b>	White	<b>261-0135</b>	50/Pkg.
<b>113-9724</b>	White w/Velcro		250/Case

### Kentek® Patient Eye Shields

<b>290-9078</b>	Laser Disposable	25 Pair/Box
<b>290-5443</b>	IPL Disposable	50 Pair/Box
<b>290-9079</b>	Microdermabrasion Disposable	50 Pair/Box

### Facial Cleansing Towelette

<b>100-0987</b>	Individually Wrapped	100/Box
-----------------	----------------------	---------

### Silver Nitrate Applicator

<b>277-0895</b>	Wood 6"	100/Vial
-----------------	---------	----------

### HENRY SCHEIN® Wooden Facial Applicator

<b>100-2416</b>	Regular 6" Non-sterile	500/Box
-----------------	------------------------	---------

### Glycolic Applicator

<b>114-6583</b>	8"	100/Box
-----------------	----	---------

### HENRY SCHEIN® TABLE PAPER

#### Crepe Table Paper—White

<b>100-9865</b>	18" x 125'	12/Case
<b>100-1657</b>	21" x 125'	12/Case

#### Smooth Table Paper—White

<b>100-9491</b>	18" x 225'	12/Case
-----------------	------------	---------

#### Dri-Perf Table Paper, Poly-Back Perforated Crepe

<b>895-1155</b>	18" x 125'	9/Case
<b>895-8433</b>	21" x 125'	9/Case

### HENRY SCHEIN® EXAM GOWNS

#### Nonwoven Multiphasic Gowns

<b>100-7083</b>	Blue, 30" x 42"	50/Case
-----------------	-----------------	---------

#### Premium Exam Gown

30" x 42"	50/Case		
<b>895-8836</b>	Blue	<b>895-4109</b>	Mauve

### HENRY SCHEIN® PREMIUM EXAM CAPE

30" x 21"		100/Case
Specify:		
<b>895-4429</b>	Blue	<b>895-2504</b> Mauve

### FlexFit™ Exam Cover-Up

<b>395-7263</b>	Blue	25/Case
-----------------	------	---------

### HENRY SCHEIN® EXAM DRAPE

<b>100-1797</b>	Premium White	40" x 48"	100/Case
-----------------	---------------	-----------	----------

### Kleenex® Facial 2-Ply Tissue

<b>100-2649</b>	100/Box
<b>100-5911</b>	95/Box
<b>643-7651</b>	125/Box

### Plastic Drinking Cups, 5 oz.

1000/Case		
Specify:		
<b>100-3902</b>	White	<b>100-4361</b> Blue
		<b>100-2104</b> Mauve

*Available in 7 other designer colors!*

### Graduated Medicine Cups

<b>100-0580</b>	1 oz.	100/Pkg.
-----------------	-------	----------

### Pleated Soufflé Cups

<b>250-0208</b>	1 oz.	250/Case
-----------------	-------	----------

### 8½" Plastic Emesis Basin

Specify:		
<b>100-0164</b>	Mauve	Each
<b>103-8402</b>	Blue	Each

## TOWELS

<b>643-2531</b>	Scott Kitchen Roll	20/Case
-----------------	--------------------	---------

### C-Fold Towels

<b>100-8448</b>	Kleenex® 13.25" x 10.4", 2 Ply	2400/Case
<b>101-1510</b>	Scott® 13.25" x 10.4", 2 Ply	2400/Case
<b>109-9229</b>	Tork Universal	2400/Case

### Multi-Fold Towels

<b>101-8156</b>	Kleenex®	2400/Case
<b>101-2063</b>	Scott®	4000/Case

### HENRY SCHEIN® Dri Guard Professional Towels

2-ply Tissue/1-Ply Poly, 13" x 19"	500 Case	
Specify:		
<b>100-5715</b> White	<b>100-7265</b> Blue	<b>100-6341</b> Mauve

*Available in 7 other designer colors!*

### Bathroom Tissue

<b>643-9066</b>	Scott® Surpass, 2-Ply	80 Rolls/Case
<b>101-4203</b>	Scott® Personal Seat Covers	250/Pkg.

### HENRY SCHEIN® Underpads/Chux

#### Blue Poly/2-Ply tissue/1-Ply Nonwoven

<b>112-5633</b>	17" x 24"	300/Case
<b>112-5634</b>	23" x 24"	200/Case

### HENRY SCHEIN® Cotton Tipped Applicator

<b>100-6015</b>	3" Non-Sterile	1000/Box
<b>100-9175</b>	6" Non-Sterile	1000/Box
<b>100-9249</b>	6" Sterile (2s)	100/Box
<b>120-4772</b>	6" Sterile (1s)	100/Box

### HENRY SCHEIN® Cotton Balls

Sterile		
<b>100-4752</b>	Medium	500/Box
<b>100-0468</b>	Non-Sterile-Medium	4000/Case
<b>100-1491</b>	Large	2000/Case

### HENRY SCHEIN® ClearUltrasound Gels

<b>900-4352</b>	8.5 oz Bottle	Each
<b>900-4353</b>	5-liter Bottle	Each

# spotlight on: disposable csr supplies

## PATIENT CONSULTATION/PREOP

### HENRY SCHEIN® Surgical Marker, Blue

Contains Non-Irritating Gentian Violet Ink

900-7019	Sterile With Ruler and 6-Up Labels, Taper Tip	50/Box
900-7018	Non Sterile Pen, Taper Tip	100/Box
900-7020	Non Sterile Mini Pen	100/Box

### HENRY SCHEIN® Alcohol Prep Pad

104-8298	Sterile Medium	200/Box
104-6352	Non Sterile Medium	200/Box
102-8806	Isopropyl Alcohol 70%	16 oz.

### Large Prep Pad

362-5582	Sterile	200/Box
267-6391	Gallant Disposable Safety Prep Razor	50/Box

## FOR THE SURGICAL PROCEDURE AND RECOVERY ROOMS

8½" Plastic Emesis Basin	Each	
100-0164	Mauve	103-8402 Blue
404-8380	Blanket Adult Large	10/Box

### Scrim Reinforced Gowns

	Blue	
859-5168	30"x 42"	50/Case
859-7465	XXL	25/Case

### Cloth Patient Gowns

	Each	
327-4282	Snowflake, Large, 45"x 63"	
327-0733	Magna Gown 52" x 87" (Up to 10X)	

### Cloth Patient Gowns w/Ties

265-4782	Floral 26"x 41"	265-4419 Blue 40"x 36"
----------	-----------------	------------------------

### Comfor-Treds® Socks

	48/Case	
533-4798	Large Beige	533-1125 X-Large Gray

### Pillow Paws® Terry Slippers

	48/Case	
605-9967	Adult	681-9781 X-Large

## STERILE SURGICAL DRAPES BLUE

### HENRY SCHEIN®

900-4685	Fenestrated, 18" x 26"	50/Box
900-4686	Non-Fenestrated, 18" x 26"	50/Box

## MISCELLANEOUS

153-1604	Half Sheet Fan Folded, 44" x 58"	Each
812-9417	Chest 124" x 100" w/13" x 14" Fenestration	12/Case
153-6230	¾" Fanfold 77" x 56", Rev R	20/Case
153-0554	Sheet Split 37"	10/Case
114-4486	Three Quarter Reinforced 60" x 76"	20/Case
643-6226	Utility Drape, 26" x 15"	200/Case
153-2452	Chest/Breast Sheet, 77" x 123"	Each

## EQUIPMENT DRAPES & COVERS—Sterile

### Mayo Stand Cover Poly

153-1339	Mayo Stand Cover Poly 23" x 54"	30/Case
214-2216	Back Table Cover 44" x 90"	28/Case
372-9068	Camera Drape 5" x 93"	20/Case
428-1232	Camera Drape-Arthroscope	25/Box
111-6815	Camera Drape 5" x 96"	5/Box
358-9494	Table Cover Poly 44" x 76"	22/Case

## OR TOWELS STERILE

912-9280	OR Towel 17" x 26"	80/Case
933-1103	Ultra-Med OR Towel Blue 17" x 27"	4/Pkg.
631-8218	Actisorb Towels 100% Cotton	72/Case
933-5054	OR Towel Blue	6/Pkg.

## WOUND DRAINS—STERILE

### SeromaCath™ Wound Drainage System

463-8254	14 Ga x 3½"	5/Box
<i>for deep seromas common with abdominoplasty</i>		
992-9951	14 Ga x 2"	5/Box
<i>for superficial seromas</i>		
104-6247	100mL Bulb Only w/Anti-Reflex Valve	Each

### Surgidyne™ w/⅛" Trocar

111-6620	10FR Round Xtra Fluted	10/Case
----------	------------------------	---------

### Discrete Drain w/Trocar—Flat

111-6627	7mm x 20cm Valve Full Perf	10/Case
109-8421	10FR, w/⅛" END-PERF	10/Case

### Drain Kit with S-Vac™ 100mL Bulb Evacuator

110-5179	10FR w/⅛" Trocar Round Full fluted	10/Case
----------	------------------------------------	---------

### Drain Kit with 100mL Bulb Evacuator

108-8031	15FR Silicone Round Full fluted Channel	10/Case
111-3525	19FR w/⅜" Trocar Round, Full fluted	10/Case

### Drain Valve w/o Trocar—Flat

108-8032	7mm x 20cm Full Perf	10/Case
110-0405	10mm x 20cm Full Perf	10/Case

### Drain Valve w/⅜" Trocar—Flat

110-1157	15FR Round Xtra Fluted	10/Case
<i>For Pain Pumps—See Page 9</i>		

## ANESTHESIA BREATHING CIRCUITS

108-1580	Isoflex™ 4 Ports w/Filter	20/Case
824-0410	King Flex 2 60" w/Filter	20/Case
106-6153	Circuit Adult	20/Case
421-7456	InfusO.R.™ 72" Pump Sets	60/Case
961-7557	Adult Expandable Straight Wye 3L	20/Case
102-5440	Adult 60" Straight Wye 3L	15/Case
110-0115	King Flex 2 72" 2L w/Filter	50/Case
106-7455	Vital Signs®	20/Case

## OXYGEN MASK

111-2591	Air Cushion w/Peep Valve Adult	20/Case
243-8715	Oxygen Face Mask Adult	20/Case

## HENRY SCHEIN® NASAL CANNULA

900-7035	Adult—Regular Tips	50/Box
900-7036	Adult—Curved Tips	50/Box
900-7037	Adult—Flared Tips	50/Box
116-4448	Adult Divided Cannula w/7" LL Line	25/Case

### Carbolime™ Gas Absorbable Lime

<i>For Removal Of CO<sub>2</sub> From Patient Breathing Circuits</i>		
782-3095	PrePackaged	1.36Liter

### Disposable Light Handle Cover

711-1180	(for Burton Model)	25/Box
----------	--------------------	--------

### Urine Specimen Cups

114-0542	w/Lid 120mL	300/Case
----------	-------------	----------

## HOT COLD THERAPY

### Accurate™ Reusable Pack—Cold

	12/Case	
467-5687	Eye	467-6589 Full Face

### Hot Cold Gel Pack

467-3325	10 x 15	12/Case
----------	---------	---------

### Accurate™ Reusable Round Hot/Cold Pack

467-0126	Pink	Each
467-9362	Pink	50/Case
467-7628	Blue	50/Case

*Ask your Sales Consultant how to personalize with your practice information.*

### HENRY SCHEIN® Instant Cold Compress

900-4207	5" x 5½"	50/Case
900-4206	5" x 7"	48/Case
900-4205	6" x 9"	24/Case

### HENRY SCHEIN® Reusable Hot/Cold Pack

104-5324	4" x 6"	Each
101-0903	6" x 10" Gel	24/Case

# spotlight on: gauze, dressings & wraps

## GAUZE SPONGE

### HENRY SCHEIN® All Gauze Non-Sterile

100-2524	2" x 2" 8-Ply	200/Pkg.
100-1570	2" x 2" 12-Ply	200/Pkg.
100-6458	3" x 3" 8-Ply	200/Pkg.
100-5004	3" x 3" 12-Ply	200/Pkg.
100-5952	4" x 4" 8-Ply	200/Pkg.
100-1444	4" x 4" 12-Ply	200/Pkg.

### HENRY SCHEIN® Premium Sponge Non-Sterile

104-8197	2" x 2" 8-Ply	200/Pkg.
104-8588	2" x 2" 12-Ply	200/Pkg.
104-8195	3" x 3" 12-Ply	200/Pkg.
104-8194	4" x 4" 8-Ply	200/Pkg.
104-8198	4" x 4" 12-Ply	200/Pkg.

### HENRY SCHEIN® Sterile Gauze Pad

100-4380	2" x 2" 12-Ply	100/Box
100-2634	4" x 4" 12-Ply	100/Box

### HENRY SCHEIN® Sterile Gauze Sponge

101-4947	2" x 2" 8-Ply	100/Pkg.
101-1768	3" x 3" 12-Ply	80/Pkg.
101-5519	4" x 4" 8-Ply	50/Pkg.
101-0005	4" x 4" 12-Ply	50/Pkg.

### Curity® Gauze Sterile

647-4174	4" x 4" 12-Ply	10/Tray
----------	----------------	---------

## NON-WOVEN SPONGE

### HENRY SCHEIN® Criterion Sponge Non-Sterile

104-2930	2" x 2" 4-Ply	200/Pkg.
104-2410	3" x 3" 4-Ply	200/Pkg.
104-2411	4" x 4" 4-Ply	200/Pkg.

### HENRY SCHEIN® Premium Non-Woven Non-Sterile

101-4336	4" x 4" 4-Ply	200/Pkg.
----------	---------------	----------

### HENRY SCHEIN® Non-Woven 100% Cotton Non-Sterile

100-3835	3" x 3" 12-Ply	100/Box
100-4420	4" x 4" 12-Ply	100/Box

### HENRY SCHEIN® Syngaaze-50 Non-Woven Non-Sterile

101-4583	4" x 4" 4-Ply	200/Pkg.
----------	---------------	----------

## ABDOMINAL PADS STERILE

120-2048	Combine	5" x 9"	25/Box
120-4756	Combine	8" x 10"	20/Box
890-6150	Dermaeca	7½" x 8"	18/Pkg.

## LAPAROTOMY SPONGE STERILE

933-4692	X-ray Detect	12" x 12"	5/Box
603-7678	Prewashed	18" x 18"	40/Case
890-9977	X-ray Detect 5's	18" x 18"	40/Case
663-0616	X-ray Detect	18" x 18"	100/Case
890-1438	X-ray Detect	17" x 26"	100/Case

## CONFORMING STRETCH GAUZE

### HENRY SCHEIN® Conforming Stretch Gauze-Non-Sterile

104-2704	1" x 4.1 Yd.	12/Bag
104-8825	2" x 4.1 Yd.	12/Bag

### Kerlix® Gauze Roll

890-4524	Sterile, 6-Ply, 4½" x 4.1 Yd.	Each
890-7346	Non-sterile, 6-Ply 4½" x 4.1 Yd.	12/Box

### HENRY SCHEIN® Packing Strip-Plain

104-7976	¼" x 5 Yd.	Roll/Bottle
104-6304	½" x 5 Yd.	Roll/Bottle

### Surgilast® Tubular Elastic Gauze

251-7456	Size# 5.5 Medium 19¾" x 25 Yd.	Roll
251-2525	Size# 6 Large 3¾" x 25 Yd.	Roll
285-9496	Size#8 Medium 10" x 25 Yd.	Roll
286-2684	Size#10 X-Large 38" x 25 Yd.	Roll

### HENRY SCHEIN® Elastic Bandage Rolls, Latex-free

#### Compare to Ace®

831-0410	2" x 4½ Yd.	10/Box
831-0401	4" x 4½ Yd.	10/Box
831-0402	6" x 4½ Yd.	10/Box

### HENRY SCHEIN® Elastic Bandage Rolls w/Velcro, Latex-free

900-4683	4" x 4½ Yd.	10/Box
900-4684	6" x 4½ Yd.	10/Box

### HENRY SCHEIN® Medicated Bandage

#### Compare to Unna's Boot

100-3444	3" x 10 Yd.	Roll
100-3256	4" x 10 Yd.	Roll

## ADHESIVE BANDAGES

911-7964	Coverlet® Spots, 7/8"	100/Box
911-5389	Coverlet® Spots Oval, 1½"	100/Box
911-0396	Coverlet® Strips 1" x 3"	100/Box

## TRANSPARENT DRESSING

777-9551	Tegaderm®	4" x 4¾"	50/Box
777-1180	Tegaderm®	4" x 4¾"	10/Box
777-9152	Tegaderm®	6cm x 7cm	100/Box
926-4993	Tegaderm® HP	6cm x 7cm	100/Box

## NONADHERENT DRESSING

### Telfa® Sterile

890-0899	2" x 3" 1's	100/Box
890-2865	3" x 4" 1's	100/Box
890-7793	3" x 8" 1's	50/Box

## HEMOSTAT Sterile

908-3470	Gelfoam® Size #4 ¾" x ¾"	6x2/Pkg.
908-3300	Gelfoam® Size #12 ¾" x ¾"	12/Pkg.
908-6684	Gelfoam® Size #100	6/Pkg.
654-0029	Surgicel®, ½" x 2"	12/Pkg.
555-6539	Surgicel® Absorbable 2" x 14"	12/Pkg.
555-0204	Surgicel® Absorbable 4" x 8"	12/Pkg.
934-3367	Surgicel® Fibrillar 2" x 4"	10/Pkg.
555-5021	Surgicel® Fibrillar 1" x 2"	Each

## SPECIALTY DRESSING/ ADVANCED WOUND CARE

Cica-Care Silicone Adhesive Gel		
120-6418	5" x 6"	10/Box
555-0093	Mepiform Silicone Dressing 4" x 7"	5/Box
777-5068	Reston® Self-Adhering Foam Pad Medium Support	10/Pkg.

### Topifoam® Post Surgical Dressing

157-1640	8" x 12"	30/Case
----------	----------	---------

### Silverseal® Dressing Wound

714-9007	10/Box
----------	--------

### XEROFORM™ Petrolatum Gauze-Sterile

194-8405	2" x 2"	25/Box
617-8219	1" x 8"	50/Box
115-2723	5" x 9"	50/Box



## CLOTH TAPE

101-2246	Mepipore™	2" x 10 Yd.	12/Box
612-0590	Mepipore™	3" x 10 Yd.	12/Box

## Surgical Tape- Sterile

100-7004	Adhesive Flesh	2" x 10 Yd.	6/Box
100-5929	Adhesive White	2" x 10 Yd.	6/Box
101-5979	Cloth	2" x 10 Yd.	6/Box
101-9673	Paper	1" x 10 Yd.	12/Box

## FOAM TAPE

### Microfoam™ Tape

777-6351		2" x 5½ Yd.	6/Box
777-8152		3" x 5½ Yd.	4/Box
777-5311		4" x 5½ Yd.	3/Box

## STRETCH TAPE

### Elastikon® Elastic Tape

555-5165		1" x 2½ Yd.	12/Box
555-5187		2" x 2½ Yd.	6/Box

## TRANSPARENT TAPE

### Transparent Surgical Tape-Sterile

101-4645		1" x 10 Yd.	12/Box
101-9226		2" x 10 Yd.	6/Box

### Transpore™

777-7305		1" x 10 Yd.	12/Box
777-9422		2" x 10 Yd.	6/Box

### Micropore™

777-4451	Flesh	½" x 10 Yd.	24/Box
777-5133	Flesh	1" x 10 Yd.	12/Box
777-6080	White	1" x 10 Yd.	12/Box
777-9382	White	2" x 10 Yd.	6/Box

## COBAN™ – Self Adherent Wrap

777-2083		1" x 5 Yd.	5/Pkg.
777-7993		2" x 5 Yd.	Roll
777-5640		3" x 5 Yd.	Roll
777-5476		4" x 5 Yd.	Roll

## Co-Flex® Non-Latex Tan

681-4331	Tan	4" x 5 Yd.	18/Case
110-3877	Rainbow	1" x 5 Yd.	30/Case

## Medirip® Bandage

648-1920		4" x 5 Yd.	12/Box
----------	--	------------	--------

## Hypafix® Retention Tape

355-8145		2" x 10 Yd.	Roll
120-6742		4" x 10 Yd.	Roll

INTRODUCING...

gel-care  
ADVANCED

# SCAR THERAPY THAT DELIVERS

**Clinically proven better at treating scars than Mederma® and Cica-Care™**

## CLINICALLY-PROVEN SCAR THERAPY

**Cost-Effective Gel-Care® Advanced Sheets and Wraps Can Improve the Appearance of Hypertrophic and Keloid Scars.**



Being occlusive is easy... but traditional silicone sheets are unable to deliver ingredients the way Gel-Care® Advanced does. ONLY Gel-Care® Advanced

patent-pending silicone-free technology incorporates an occlusive therapy with the vitamin, antioxidant, and hydration combined in a single effective and easy-to-use sheet that is washable and reusable. The clinically-proven ingredients continue to treat the skin even after the sheet is removed.

Gel-Care® Advanced treats scars caused by:

- ✓ injury
- ✓ burns
- ✓ surgery
- ✓ post-procedural

Henry Schein Item Code			5"x6"Self Adhesive Sheet	1.5"Self Adhesive Discs	1.5"Self Adhesive Strips	3"Non-Adhesive Wrap	6"Non-Adhesive Wrap
			471-0005	471-0006	471-0010	471-0008	471-0009
			10/pkg.	6/pkg.	2/pkg.	1/pkg.	1/pkg.
For doctors who are:	Or for customers who may purchase:	To be used for scars and prevent keloids resulting from:					
<b>Derms, Plastics</b>	<b>Mohs Kits</b>	<b>Mohs Surgery</b>	X	X			
<b>Derms, Cosmetic Surgeons</b>	<b>Cryotherapy, Laser Accessories</b>	<b>Skin Tag Removal</b>		X			
<b>Dermatologists</b>	<b>Biopsy Punch</b>	<b>Skin Biopsy</b>		X			
<b>Plastics, Cosmetic Surgeons</b>	<b>Suture Kits</b>	<b>Trauma Scars</b>	X	X	X		
<b>Derms, Cosmetic Surgeons</b>	<b>Laser or Laser Accessories</b>	<b>Laser, Tattoo Removal</b>				X	X
<b>Plastics</b>		<b>Burn Scar</b>	X			X	X
<b>Plastics</b>		<b>Skin Graft Scars</b>	X			X	X
<b>Plastics, Cosmetic Surgeons, OB/Gyn</b>	<b>Compression Garments</b>	<b>Breast, Thoracic, C-Section</b>			X		
<b>Plastics</b>		<b>Scars, Joint, Neck</b>				X	X

The **Criterion Glove** line offers great comfort and a variety of styles **specific to your needs.** **Unsurpassed quality** and **durable construction** make this glove line **a sure fit.**



### CRITERION® POWDER-FREE LATEX SURGEONS' GLOVES

Compare to *Micro-Touch® PF Latex Surgeons' Gloves*

Sterile

Textured • Chlorinated • Certified Protein  
Claim: None

Henry Schein's Criterion brand of latex surgical gloves helps eliminate powder-related complications and irritation, yet still provides outstanding quality and performance you would expect from a premium surgical glove.  
Gloves.....50 pair/box

Specify:

5½	.....	(104-6125)
6	.....	(104-5073)
6½	.....	(104-9218)
7	.....	(104-3502)
7½	.....	(104-3503)
8	.....	(104-3563)
8½	.....	(104-7315)
9	.....	(104-7227)

*The Criterion Surgeons' gloves have a high degree of dexterity and form fit to reduce hand fatigue.*



### CRITERION® LIGHTLY POWDERED LATEX SURGEONS' GLOVES

Compare to *Triflex® Sterile Powdered Surgeons' Latex Gloves*

Sterile

Henry Schein's Criterion brand of low-powder latex surgical gloves provides optimal balance between barrier protection and tactile sensitivity.  
Smooth • Chlorinated • Certified Protein  
Claim: None  
Gloves.....50 pair/box

Specify:

5½	.....	(104-7721)
6	.....	(104-3500)
6½	.....	(104-9242)
7	.....	(104-3501)
7½	.....	(104-5920)
8	.....	(104-4696)
8½	.....	(104-5787)
9	.....	(104-9192)



### CRITERION® LP LIGHTLY POWDERED LATEX EXAM GLOVES

Textured

Non-sterile, Micro-Textured

Choose Criterion Latex for superior value. These low-powder gloves offer the grip and durability you need at a low price.

Gloves .....100/box

Specify:

X-small	.....	(102-5425)
Small	.....	(102-7597)
Medium	.....	(102-5426)
Large	.....	(102-5427)
X-large (90/box)	.....	(102-5428)



### CRITERION® PC POWDER-FREE LATEX EXAM GLOVES

Non-sterile, Polymer Coated, White

Sets the standard in quality, powder-free gloves. Nonchlorinated, synthetic polymer coating eases donning. Textured finish for enhanced grip. Excellent tactile sensitivity.

Gloves .....100/box

Specify:

X-small	.....	(102-5418)
Small	.....	(102-5419)
Medium	.....	(102-5421)
Large	.....	(102-6730)
X-large (90/box)	.....	(102-5422)



### CRITERION® CL POWDER-FREE LATEX EXAM GLOVES

Non-sterile

An on-line chlorinated glove, textured for superior grip, comfortable fit, and low protein levels.

Gloves .....100/box

Specify:

X-small	.....	(102-5354)
Small	.....	(102-8296)
Medium	.....	(102-5355)
Large	.....	(102-7763)
X-large	.....	(102-5357)



# The *illusion* is deceiving.

See your chemical allergy for what it is.

Ansell chemical accelerator-free gloves end the *masquerade*.

Prepare to be shocked as we unveil the mysterious source behind your allergy problem. While many often think latex is the cause of their suffering – the cleverly disguised culprit is often the chemical accelerators used to harden and shape both latex and synthetic gloves. In fact, **80%** of reported glove associated contact dermatitis is attributed to chemical accelerators, also known as a Type IV allergy. Ansell has unmasked the true source of your suffering – and has taken measures to stop it. Only Ansell offers an entire line of premium exam and surgical gloves that are chemical accelerator-free and latex-free to keep uninvited chemical allergies out of your life. When it comes to recognizing and preventing chemical allergies, the masquerade is over. Let the celebration begin.

Visit [AnsellProtects.com](http://AnsellProtects.com) to have even *more revealed*.



**Micro-Touch® NitraFree™**  
Latex-Free Powder-Free Exam Gloves  
Non-sterile, Pink



- Specify:
- X-small ..... (685-4447)
  - Small ..... (685-4387)
  - Medium ..... (685-7305)
  - Large ..... (685-4728)
  - X-large ..... (685-0140)

**Micro-Touch®**  
Latex-Powdered Sterile  
Surgical

- 50 Pair/Box
- Size 6.0 ..... 685-5173
  - Size 6.5 ..... 685-5250
  - Size 7.0 ..... 685-5447
  - Size 7.5 ..... 685-5517
  - Size 8.0 ..... 685-5607
  - Size 8.5 ..... 685-6104

**No Powder**  
Latex Powder-Free  
Sterile Surgical

- 50 Pair/Box
- Size 6.0 ..... 555-1183
  - Size 6.5 ..... 555-0708
  - Size 7.0 ..... 555-2889
  - Size 7.5 ..... 555-4808
  - Size 8.0 ..... 555-5461
  - Size 8.5 ..... 555-5468

**Encore®**  
Latex Powder-Free  
Sterile Surgical

- 50 Pair/Box
- Size 6.0 ..... 101-2046
  - Size 6.5 ..... 101-0417
  - Size 7.0 ..... 101-4261
  - Size 7.5 ..... 101-6529
  - Size 8.0 ..... 101-8493
  - Size 8.5 ..... 101-4078
  - Size 9.0 ..... 101-8795

**DERMA PRENE®**  
**Isotouch® Micro White**

- Synthetic Powder-Free  
Sterile Surgical  
50 Pair/Box
- Size 6.0 ..... 685-0078
  - Size 6.5 ..... 685-0079
  - Size 7.0 ..... 685-0080
  - Size 7.5 ..... 685-0081
  - Size 8.0 ..... 685-0082
  - Size 8.5 ..... 685-0083
  - Size 9.0 ..... 685-0084

**Ultra Neoprene**  
Synthetic Powder-Free  
Sterile Surgical

- 50 Pair/Box
- Size 6.0 ..... 685-1993
  - Size 6.5 ..... 685-3909
  - Size 7.0 ..... 685-9192
  - Size 7.5 ..... 685-4205
  - Size 8.0 ..... 685-2748
  - Size 8.5 ..... 685-7543
  - Size 9.0 ..... 685-6121



# spotlight on: hypodermics

## NEEDLES

### BD® Spinal Needles–Sterile

987-0313	22 Ga x 3½"	25/Box
987-8728	25 Ga x 3½"	25/Box
987-0447	20 Ga x 3½"	25/Box
987-9922	18 Ga x 3½"	25/Box
800-4519	22 Ga x 3"	25/Box
987-3438	18 Ga x 6"	10/Box
987-3586	22 Ga x 5"	10/Box
987-5875	25 Ga x 3"	25/Box

### Terumo® Spinal Needles–Sterile

315-2589	22 Ga x 3½"	20/Box
315-4129	20 Ga x 3½"	20/Box
315-0813	25 Ga x 3½"	20/Box
315-1881	18 Ga x 3½"	20/Box

## SPECIALTY NEEDLES

### Accuderm® Acu-Micro Needle Reusable Metal Hub

106-0190	32 Ga x ½"	12/Box
618-1152	33 Ga x ½"	12/Box
146-3555	32 Ga x ¼"	12/Box

### Bottle Decapper

108-4917	Plier Style	20mm
----------	-------------	------

### Air-Tite® STERiJECT Aesthetic Needles (Flexible Cannula)

117-2026	27 Ga x 1"	25/Pkg
----------	------------	--------

Ultra-Thin Wall for Lowest Extrusion Force, Optimal Flexibility  
Closed tip with side port for use with dermal fillers.  
Hypodermic needles made of surgical stainless steel with polypropylene hub they are certified DNA free.

### Colorado Needles

See Page 8 Supercut Tungsten Needles by Bovie

### Myco Medical

116-8615	31 Ga x ½"	100/Box
116-5796	32 Ga x ½"	100/Box

Products designed with a purpose...  
... to help you help them.

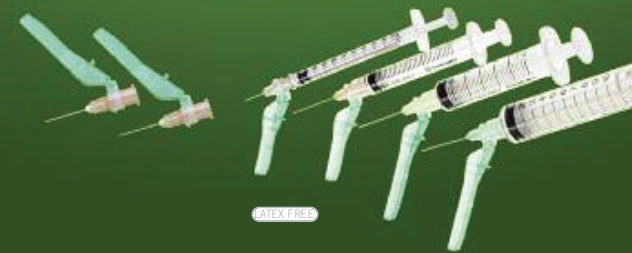


## TERUMO MEDICAL PRODUCTS

Terumo carries a wide variety of safety and conventional needles and syringes from 18G to 30G.

### SurGuard®2 Safety Needles

315-5190	27G x ½" Needle
315-1671	30G x ½" Needle



### Conventional Needles and Syringes

100-2013	27G x ½" Needle
315-9974	30G x ½" Needle
100-6599	1cc TB syringe without needle, with luer slip
100-5094	3cc syringe without needle, with luer lock tip
315-0026	¾cc insulin syringe with 31G x ¾" fixed needle
315-4767	½cc insulin syringe with 31G x ¾" fixed needle
315-7567	1cc insulin syringe with 31G x ¾" fixed needle



SurGuard2 is a registered trademark of Terumo. TERUMO is a registered trademark of Terumo Corporation, Tokyo, Japan. © 2009 Terumo Medical Corporation.



TERUMO MEDICAL PRODUCTS



# HYScent Dual

2 Fragrances. 1 Device.



**Finally.  
An odor control device for large rooms.**



121-0025 Dual 6/Box 121-0024 Pod

### Unparalleled Performance

- Odorizes up to 6,000 cu. ft. of space (~750 sq. ft.)
- Excellent for medium and large-sized rooms

### Odor Neutralization

- Fragrances attack and neutralize malodors with Odourfoyl®

### Dual-Scent Capability

- Ability to alternate between two different fragrances
- Prevents your nose from becoming “numb” to the same scent

### Cost-Effective

- Refill cartridges last up to 60 days
- Fully customizable settings

### Environmentally Friendly

- No aerosols, solvents, or harmful propellants
- Uses pure essential oils
- Refill cartridges are recyclable

### Aesthetically Sleek

- Unique cylindrical design offers an ergonomic look

### Multiple Mounting Options

- Horizontal or vertical wall-mounting
- Can be hidden by mounting under a table or countertop
- Desktop stand accessory available

### Silent Operation

- Dual-fan technology runs silently

HYScent Fragrances: 6/Box				
	Citrus	121-0033		Cherry Almond 121-0028
	Linen	121-0038		Lavender 121-0041
	Ocean	121-0031		Vanilla 121-0042
	Pomegranate Plum	121-0036		Mango 121-0040
	Cinnamon	121-0044		

# D3 Micro

Automatically Disinfects Door Handles



The D3 Micro kills flu virus and 99.9% of germs\* to help protect people at a critical point of cross-contamination –the door handle.

The most cost-effective way to disinfect door handles, and the only way to do it automatically. The D3 Micro is the only Environmental Protection Agency (EPA) registered automated system for disinfecting door handles.



### Cost-Effective

- Refill canister lasts for up to 100 days
- Ambient light sensor saves battery and canister life

### Programmable

- Adjustable spray frequency (15, 30 or 60 minutes)
- Day or 24-hour interval settings

### Liquid Crystal Display

- Instant indication of battery strength and refill canister level

### Easy to Install and Maintain

- Works with your existing door hardware
- Mounts in minutes with no special tools or wiring required
- Refill canisters can be replaced in seconds

### Alcohol and Quat-Based Formula

- Quick-drying, anti-microbial mist
- Disinfects the entire door handle – including the underside

### Aesthetics

- Cutting-edge design
- Presents a professional image

\*Kills Influenza A2, MRSA, Rhinovirus, Norovirus, Salmonella, Pseudomonas and Staphylococcus aureus.

EPA REG. NO. 1839-85-83326  
EPA EST. NO. 074216-IL-001

121-0014	D3 Micro Dispenser	each
121-0015	D3 Replacement Cartridge	each

## INSTRUMENT REPROCESSING

<b>240-6538</b>	Alconox® Powder	4 Lb/Box
<b>555-6446</b>	Cidex® OPA Solution	Gallon
<b>555-2497</b>	Cidex® OPA Solution Test Strips	60/Bottle
<b>555-4973</b>	Cidex® Plus 3.4% w/Activator	Gallon
<b>555-0126</b>	Cidex® 2.4% Glutaraldehyde	1.25 Gallon
<b>555-1853</b>	Cidex® Instrument Soak Tray	Each
<b>555-0498</b>	Cidex® Plus 3.4% w/Activator	Quart
<b>555-3646</b>	Cidex® Plus Test Strips 28 Days	60/Bottle
<b>640-5007</b>	Compliance® Sterilizing Solution	Gallon
<b>640-5822</b>	Empower® Enzymatic Solution	Gallon
<b>555-1112</b>	Enzol® Detergent Enzymatic	Gallon
<b>102-7394</b>	Maxicide® w/Activator 2.5% 28-Day	Gallon
<b>102-5796</b>	Maxicide® Plus 3.4%	Quart
<b>173-3976</b>	Metricide® 28 2.5% Glutaraldehyde	Gallon
<b>640-8231</b>	Metricide® OPA Plus Solution	Gallon
<b>312-4550</b>	Metricide® OPA Plus Solution	Test Strips 2x100/Case
<b>640-1997</b>	Metricide® Plus 30-Day	Gallon
<b>173-7048</b>	MetriZyme®	Gallon
<b>120-3619</b>	Wavicide® Germicide	Each
<b>312-1086</b>	Zymex® Enzymatic Cleaner Low Foam	Gallon
<b>312-3920</b>	Zymex® Concentrate Quart	
<b>173-8351</b>	Metricide® Solution 14-Day	Quart
<b>261-4816</b>	Enzymatic Cleaner	Gallon
<b>104-4681</b>	Maxicide® Activated 2.65%	Gallon
<b>102-2866</b>	Maxicide® NS 14 Day	Gallon
<b>555-1541</b>	Cidex® Test Strips	15/Bottle
<b>900-0475</b>	Maxizyme® Tablets	64/Box
<b>953-2961</b>	EZ-Zyme® Cleaner ¾ oz	32/Box
<b>113-6127</b>	Rapicide® Disinfectant, 4 Gallons	Case
<b>804-5688</b>	MetriClean II	Gallon
<b>102-6003</b>	Maxicide® 2.50%	Quart
<b>102-5539</b>	Surgical Milk Concentrate	64 oz.
<b>176-4339</b>	Metricide® Plus	Quart
<b>635-4984</b>	Cetylclde-G® 2 Part	32 oz.
<b>247-4313</b>	Biozyme-IT® Concentrate	32 oz.
<b>120-3268</b>	Sklar Kleen® Detergent	3.5 Lb.
<b>668-2024</b>	Clean & Simple® Tablets	64/Box
<b>888-1935</b>	Biosonic® Disinfectant Cleaner Concentrate	8 oz.
<b>629-0001</b>	Reserl® XL HLD Disinfectant	4 Liter Bottle
<b>101-4412</b>	General Purpose Cleaner Super	16 oz./Bottle
<b>173-2446</b>	Metricide® 28 2.5% Glutaraldehyde Alkaline	32 oz.
<b>602-3437</b>	Metriest® Strips 1.8% 28 Day	60/Bottle
<b>230-0037</b>	Organisol® Powder Detergent	4 Lb Box
<b>312-5022</b>	Sporox II® Disinfection Solution	Gallon

## INSTRUMENT REPROCESSING

<b>583-5575</b>	Wavizyme® Enzyme Cleaner	Gallon
<b>555-7244</b>	Cidex® Sterile Disinfectant System Tray	
<b>312-0654</b>	Zymex® Foam Cleaner	22 oz.
<b>100-3550</b>	Non-Ionic Ultrasonic Solution Concentrate Quart	
<b>173-0332</b>	MetriZyme® Low Foam	32 oz.



## STERILIZATION POUCHES

<b>312-1228</b>	Assure Plus 3½" x 10"	200/Box
<b>312-1817</b>	Assure Plus 5½" x 11"	200/Box
<b>312-2815</b>	Assure Plus 7" x 13"	200/Box
<b>120-3416</b>	Autoclave 12" x 15" Self Sealing	100/Box
<b>141-3608</b>	Chex-All Instant Seal 8" x 16"	125/Box
<b>141-3347</b>	Chex-All Instant Seal 12" x 18"	125/Box
<b>141-9031</b>	Chex-All Instant Seal 5" x 10"	250/Box
<b>101-4805</b>	Kinguard Sterilization Wrap 24" x 24"	240/Case
<b>900-4783</b>	Maxima Multi Parameter 12" x 18"	100/Box
<b>777-9032</b>	Comply Chemical Integrators Steam	500/Pkg.

## CSR STERILIZATION WRAP

<b>101-7363</b>	Kinguard® 24" x 24"	500/Case
<b>181-3907</b>	Kinguard® Heavy-Duty 1 Step	72/Case
<b>943-9024</b>	Kinguard® One-Step, 24" x 24"	240/Case
<b>608-5474</b>	Kinguard® One-Step, 30" x 30"	144/Box
<b>761-5652</b>	Kinguard® One-Step, 36" x 36"	144/Box
<b>201-7916</b>	Sterilization Wrap, 24" x 24"	250/Case

## BIOLOGICAL INDICATORS

<b>120-0714</b>	Passport® Sterile System Mail-In	12/Pkg.
<b>833-9786</b>	ProSpore® 2 Indicator w/Crusher	50/Box
<b>436-4128</b>	ProSure® Mailer Kit	12/Box
<b>331-2136</b>	ProSure® Mailer Kit Monitor	52/Box
<b>335-0392</b>	ProTest® Steam	100/Box
<b>780-3685</b>	ProTest® Steam	25/Box
<b>141-3573</b>	Smalstrip Strips Steam 4"	250/Box
<b>104-8993</b>	Steam Autoclave Indicator Tape 1"	Roll
<b>220-1989</b>	Steam Sterilizer Integrator 2 x ¾"	100/Box
<b>141-3661</b>	Sterilization OK Indicator Str 4"	250/Box
<b>777-9599</b>	Attest®	100/Box
<b>777-3276</b>	Attest® Rapid Read	50/Box
<b>777-4656</b>	Attest®	25/Box
<b>777-5692</b>	Attest® Steam	100/Box
<b>101-4715</b>	 HENRY SCHEIN® Maxitest Mail In	52/Box
<b>101-5830</b>	 HENRY SCHEIN® Maxitest Mail In	12/Pkg.
<b>613-4434</b>	Passport Plus Mail In	12/Box

## SURFACE DISINFECTANTS

<b>261-3685</b>	Burnshine® Instrument Germicide	Gallon
<b>640-0012</b>	Cavicide®	Gallon
<b>640-5006</b>	Cavicide® 5-Gallon Pack, 2.5 Gallon	2/Case
<b>640-2261</b>	Cavicide® Spray	24 oz.
<b>640-8482</b>	CaviWipes® Towelettes	66/Pkg
<b>640-2805</b>	CaviWipes® Towelettes Disinfection, Large	160/Pkg.
<b>635-0037</b>	Cetylclde II® Concentrate Kit	32 oz.
<b>833-6297</b>	CitriGuard II®	Gallon
<b>833-2853</b>	CitriGuard II® Disinfectant	32 oz.
<b>101-7621</b>	Citrus II® Germicidal Cleaner, Refill	Gallon
<b>134-0487</b>	Discide® Ultra Towelette, Large	60/Pkg.
<b>134-8761</b>	Discide® Ultra Towelette, 6" x 6¾"	160/Pkg.
<b>923-8594</b>	Disinfectant Madacide-1	Gallon
<b>120-1736</b>	Dispatch Cleaner Disinfectant, w/Bleach	Gallon
<b>176-7246</b>	Envirocide® Disinfectant	24 oz.
<b>176-3988</b>	Envirocide® Refill	Gallon
<b>437-7034</b>	EZ-Kill® Wipes 6¾" x 6¾"	160/Pkg.
<b>437-0003</b>	EZ-Kill® XL Wipes 10" x 10"	65/Pkg.
<b>923-1619</b>	Madacide FD Disinfectant Cleaner	Gallon
<b>101-0285</b>	Maxispray Plus	Gallon
<b>101-5818</b>	Sani-Cloth® HB Germicidal Wipe, Large	160/Pkg.
<b>267-0721</b>	Sani-Cloth® Plus Large 6" x 6¾"	160/Pkg.
<b>267-0010</b>	Sani-Cloth® Plus XL, 8" x 14"	65/Pkg.
<b>113-5423</b>	Super Sani-Cloth®, Large	160/Pkg.
<b>267-0005</b>	Super Sani-Cloth® XL, 7½" x 15"	65/Pkg.

## BOWIE-DICK TESTS

<b>777-0288</b>	Bowie-Dick Type Test Pack	Each
<b>207-5309</b>	Bowie-Dick Smart Pack Test	30/Case
<b>115-5124</b>	Comply® Bowie-Dick Test Pack, Lead Free	30/Case

## AIR FRESHENERS

<b>100-8671</b>	Citrus II® Air Fragrance Original	7 oz. Can
<b>331-0667</b>	CitraStat® Rx Deodorizer Non-Aerosol Orange	7 oz. Can

*Call your Sales Consultant for more information on Infection Control.*

## TOP 5 HENRY SCHEIN® INFECTION CONTROL PRODUCTS

**MaxiZyme**  
Enzymatic  
Detergent  
101-9031



Gallon

**CSR Wrap**  
100/Case  
100-4683 18" x 18"  
100-6950 24" x 24"  
100-8187 30" x 30"  
100-2016 36" x 36"



**Self Seal  
Sterilization Pouch**

200/Box  
112-4853 3.5" x 9"  
112-4854 5.25" x 10"  
112-4854 5.25" x 10"  
112-4860 9" x 15"



**Maxicide  
Plus 3.4%**  
w/Activator  
102-2865



Gallon

**Maxiwipe  
Germicidal  
Cloth**  
Large  
106-6794



160/Carton

**EXCLUSIVE!**

Janibell® Disposal System

**Hospital and Care  
Facility Solutions**



Enjoy a Hygienic, Hands-free, and Easy Working Environment

Maintaining a hygienic and odor-free environment is a top priority in any Hospital / Health Care facility. The Janibell waste disposal system is the most advanced and hygienic solution available. Designed for sanitary hands-free operation, Janibell provides professionally clean waste management and odor containment.

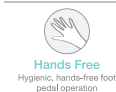
Janibell.com



Janibell® Disposal System

**Hospital and Care Facility Solutions**

Optional  
Safe Lock System  
Available



**198-0082**

15 Gallon

Build for endurance and volume. The M400S has a front facing, hands-free pedal operated swing door.

**198-0090**

15 Gallon

The top load M400B has a lower profile. The pedal operated door quickly swings up.



**198-0079**

6 Gallon

The smaller M2800B has a top load door that is also pedal operated. Perfect for smaller locations.

For more information, please visit: [www.janibell.com](http://www.janibell.com)

### JANIBELL® TRASH DISPOSAL SYSTEM—SELF RELINING

198-0089	Privé Sanitary Napkin Disposal	Each
198-0078	4 Gallon under the counter	Each
198-0079	6 Gallon	Each
198-0081	10 Gallon	Each
198-0090	15 Gallon	10-pack
198-0082	18 Gallon	Each
198-0088	Privé Refill Liners (300-400 bags)	10-pack
198-0084	4 Gallon Refill Liners (380-400 bags)	10-pack
198-0085	6 Gallon Refill Liners (380-400 bags)	10-pack
198-0086	10 Gallon Refill Liners (380-400 bags)	10-pack
198-0091	15 Gallon Refill Liners (300-400 bags)	10-pack
198-0087	18 Gallon Refill Liners (380-400 bags)	10-pack

### HAND HYGIENE Soaps, Scrubs and Sanitizers



777-0117	Avagard® Surgical Scrub Waterless	16 oz.
987-1041	E-Z Scrub Scrub Brush w/PCMX	30/Box
107-4972	Hibiclens®	Gallon
923-8209	GBG® Aloe Gel Hand Sanitizer	18 oz.
987-6022	E-Z Surgical® Scrub Brush w/4% CHG	30/Box
690-7281	Betadine® Antiseptic Solution	Gallon
987-0287	E-Z Scrub Brush w/PCMX Deluxe	30/Box
690-6950	Betadine® Solution	16 oz.
833-8374	AloeGuard® Soap Antimicrobial w/Pump	18 oz
107-6936	Hibiclens® 15mL	50/Box
300-6331	AloeGuard® Antimicrobial Soap	Gallon
107-8796	Hibiclens® Liquid	4 oz.
159-4082	PhisoHex®	16 oz.
780-3379	E-Z Scrub® w/Iodine 1%	30/Box
590-6210	Purell® Surgical Scrub w/Moisturizer	1200 mL
555-3169	Hibiclens® Solution	8 oz.
306-9953	AloeGuard® Antimicrobial Soap	800 mL
493-5108	Avagard-D® Hand Antiseptic	500 mL
590-7594	Purell® Aloe Hand Sanitizer	12 oz.
690-6606	Betadine® Solution	8 oz.
107-1746	Hibiclens® w/Pump	16 oz.
763-0326	Alcare® Foamed Alcohol	9 oz.

HENRY SCHEIN®  
**SurgTeam**  
SOLUTIONS FOR SURGI-CENTERS

**Metrex**  
Protecting People

Metrex is the only manufacturer that specializes in healthcare consumable products across 6 infection prevention hot points to help surgery centers comply with CMS infection control requirements. Metrex offers fast acting 3 minute surface disinfectants, high performing ortho-Phthalaldehyde (OPA) high level disinfectant, instrument precleaners, hand hygiene, liquid medical waste disposal and eye and face shields. [www.henryschein.com/SurgTeam](http://www.henryschein.com/SurgTeam)

640-8231	Solution	Gallon
312-0102	Solution Test Strips	100/Bottle

### MetriCide® OPA Plus:

The high-level disinfectant as strong as your commitment.



MetriCide OPA Plus outperformed Cidex OPA in a reuse stability study, performing 32 more reprocessing cycles when used in an automated endoscopic reprocessor.\*

PROTECTING PEOPLE

\*Tested Data on File.  
© 2011 Metrex Research. MetriCide is a registered trademark of Metrex Research. All other trademarks are the property of their respective holders.

The advanced OPA formula proven effective for 32 more cycles than Cidex® OPA.

An enhanced ortho-Phthalaldehyde (OPA) formulation ensures that MetriCide® OPA Plus keeps protecting your patients long after the other OPA brand has lost its effectiveness. Forty percent longer.

Now that's protection you can count on.

Find out more about how MetriCide OPA Plus is committed to helping you protect your patients and achieve operational efficiencies by visiting: [www.metrex.com/sch6](http://www.metrex.com/sch6)

**Metrex**



# spotlight on: iv sets & solutions



## Leading IV Therapy and Delivery Systems

B. Braun is a leading provider of key IV therapy and delivery systems, infusion pumps, and regional anesthesia products that are integral to each phase of the surgical process. Together, we will help keep your ASC safe, effective, and efficient from pre-op to post-op and beyond. We also offer a wide variety of educational tools to keep your team up-to-date on the latest trends and technology.

### INTROCAN SAFETY® IV CATHETERS

HENRY SCHEIN # SIZE STRENGTH NEEDLE LENGTH STRAIGHT/WING  
Polyurethane

507-9019	Each	24 Ga.	3/4"	Straight
507-6928	50/Box	24 Ga.	3/4"	Straight
507-7701	Each	22 Ga.	1"	Straight
507-8652	50/Box	22 Ga.	1"	Wing
507-7274	50/Box	20 Ga.	1 1/4"	Straight
507-5995	Each	20 Ga.	1"	Straight

#### Teflon (FEP)

507-0756	50/Box	24 Ga.	3/4"	Straight
507-5531	Each	22 Ga.	1"	Straight
507-7254	50/Box	22 Ga.	1"	Wing
507-0313	Each	20 Ga.	1 1/4"	Straight
507-5328	50/Box	20 Ga.	1"	Straight
507-4839	50/Box	20 Ga.	1"	Wing
986-6186	50/Box	18 Ga.	1 1/4"	Straight

### TOP 5 - INFUSION SETS

315-8301	Safety Wing Set Long	21 Ga. x 12"	50/Box
315-8338	Safety Winged Set Long	23 Ga. x 12"	50/Box
100-2145	Surflo Winged Set	12" 21 Ga. x 3/4"	50/Box
315-5460	Surflo Winged Set	8" 27 Ga. x 1/2"	100/Box
108-1133	Winged Set	21 Ga. x 1 3/4"	Each

### TOP 20 - IV CATHETERS

780-2171	Angiocath	22 Ga. X 1"	50/Box
987-9408	Angiocath Autoguard	20 Ga. x 1.16"	50/Box
264-3844	Angiocath Autoguard	22 Ga. x 1"	50/Box
987-6926	Insyte Autoguard	20 Ga. x 1"	Each
987-4421	Insyte Autoguard	20 Ga. x 1.16"	50/Box
987-5015	Insyte Autoguard	22 Ga. x 1"	Each
840-3495	Insyte Autoguard	18 Ga. x 1.16"	Each
987-5235	Insyte Autoguard	20 Ga. x 1"	50/Box
507-5531	Introcan Safety	22 Ga. x 1"	Each
507-5328	Introcan Safety Straight	20 Ga. x 1" Fep	50/Box
555-5923	Jelco	20 Ga x 1 1/4"	Each
555-4055	Jelco Radiopaque	18 Ga. x 1 1/4"	50/Box
101-3455	Jelco Radiopaque	20 Ga. x 1"	50/Box
555-4050	Jelco Radiopaque	22 Ga. x 1"	50/Box
555-2458	Protectiv Blue	22 Ga. x 1"	50/Box
555-9408	Protectiv Plus	20 Ga. x 1"	50/Box
315-2522	Surflash	20 Ga. x 1 1/4"	50/Box
315-9675	Surflo Blue	22 Ga. x 1"	Each
315-2314	Surflo Pink	20 Ga. x 1"	Each
315-9704	Surflo	20 Ga. x 1 1/4"	Each
315-0003	Surshield Safety-Blue	22 Ga. x 1"	50/Box

### TOP 10 IV TUBING/SOLUTION SET

840-5339	Continue-Flo & 3 Luer Lock Acto Valve	Each
153-6558	Continue-Flo Solution Set 3Y Site	Each
507-4182	2 Inj Male Female Luer Lock LGBR Tub/32"	50/Case
507-5406	Extension Set Female Luer Lock, 3 mL 21"	Each
153-0142	Extension Set w/Male Luer Lock 37"	Each
108-9697	Infusion Tubing 188"	10/Box
153-6395	Set Ext 3 Way StopCock 3 mL	48/Case
153-0291	Solution Set With Duo Vent 104"	Each
792-4809	Ultrasite Non-Vent Gravity Set 84"	50/Case

### TOP 20 IV ADMINISTRATION SETS

340-4587	Ultrasite Primary I.V. Set 3-sites	50/Case
840-3402	YSite 15 mL 106"	Each
507-1423	W/2 Injection Site 15 Dr/mL 106"	Each
507-1482	W/Injection Site 19 mL 106" 15 Dr/mL	Each
109-3822	Lifeshield Primary IV Set	48/Case

507-9725	Ultrasite Set w/15 Dr/mL/2 Blu	Each
507-1447	Primary Set w/check valve 115"	Each
507-6045	Primary Set w/Universal Spike 96" 3 Inj Site	Each
507-1402	Set w/o Injection Site 79" 15Dr/mL	Each
507-4189	Set w/1 Inj Site 15 Dr/mL 73"	Each
153-6441	Interlink Basic Set/2 Inslod	Each
507-9039	IV Set Universal Ultrasite w/2 Blue	Each
507-7313	IV Set 1 Inj Site 15 Drop 93"	Each
682-5061	IV Set Vent 83" 1 Inj Site 15 Drop	50/Case
507-5053	Set LL 2 Inj Site 2 Pc Male	50/Case
110-6179	Set 15 Drop 112" 2 Clave	50/Case
153-5563	Clearlink® Set 104"	Each
358-9489	Safesite® Set 106" Non-Vent	50/Case
507-1443	Set w/Inj Site 84"	Each

### TOP 20 IV SOLUTIONS

100-2435	Lactated Ringers Solution	1000 mL Bag
100-2808	Sodium Chloride Solution 0.9% Inj	1000 mL
153-6262	Lactated Ringers	1000 mL Bag
507-5300	Sodium Chloride 0.9% Irrigation	1000 mL Bottle
153-1434	Sodium Chloride 0.9% Irrigation	1000 mL Bottle
153-4612	Sodium Chloride 0.9% Inj	1000 mL Bag
104-6989	Sodium Chloride 0.9% 50mL SDV	25/Box
507-5201	Sodium Chloride 0.9% Irrigation	500 mL Bottle
104-8583	Sodium Chloride 0.9% BACT Inj 30 mL MDV	25/Box
153-7411	Sodium Chloride 0.9% Irrigation	250 mL Bottle
104-6823	Sodium Bicarbonate Inj 8.4% 50 mL SDV	25/Box
507-8002	Sodium Chloride Sol 0.9% Non-DEHP	250 mL/Bag
104-9943	Sodium Chloride 10 mL MPF 0.9%	25/Box
100-4737	Sod Chloride Inj 0.9%	500 mL Bag
153-1042	Sodium Chloride 0.9% Irrigation	500 mL Bottle
104-8833	Lactated Ringers	1000 mL Bag
104-6816	Normal Saline .9%	1000 mL
153-3210	Lactated Ringers Injection	500 mL
153-7468	Sodium Chloride Solution 0.9%	250 mL/Bag
507-6910	Lactated Ringers Injectable 500 mL	24/Case
248-8109	Sodium Bicarbonate Inj 8.4%	50 mL SDV

### TOP 5 MISCELLANEOUS IV THERAPY PRODUCTS

808-7732	Decanter Bag	50/Case
215-8208	Decanter Bag Sterile	50/Case
275-7456	Mini-spike IV Additive Dispenser Pin	50/Case
649-6731	Rapid Fill Admin Luer Lock	50/Box
153-5288	Stopcock 3-Way Male Luer Lock Clear	Each

Call your Sales Consultant for more information on IV Sets & Solutions.

## TOP 5 HENRY SCHEIN® PERSONAL PROTECTION PRODUCTS



**Shoe Cover**  
Blue Unisex  
**104-9452** 50 Pair/Box



**Bouffant Cap Poly**  
100/Box  
**104-6058** 24" Blue



**Cover Gown**  
Blue  
Medium/Large  
**100-5870** 10/Box



**Apron Polycoated**  
White  
**100-7483** 25/Pkg.



**Tie On Surgical Mask Low Barrier**  
**104-6809** Blue 50/Box

### SURGICAL GOWNS

<b>100-0575</b>	Sterile Large w/Hand Towel Reversible	Each
<b>233-0300</b>	Ultra Non-Reinforced X-Large	30/Case
<b>643-0809</b>	Sterile Back Large	Each
<b>643-3312</b>	Sterile X-Large	32/Case
<b>643-6007</b>	Non-Reinforced Large	Each
<b>643-0871</b>	Sterile X-Large	Each

### MASKS

#### 3-Ply Surgical Masks

<b>104-3809</b>	Ear Loop, Latex-free, Blue		50/Box
<b>104-3730</b>	Ear Loop, Latex-free, Pink		50/Box
<b>104-7321</b>	Eye Shield Procedure Hi Bar, Teal		25/Box
<b>153-1368</b>	Fluidshield Earloop w/Visor Peach		25/Box
<b>104-6809</b>	Tie-On, Pleated, Fluid Resistant		50/Box
<b>108-8728</b>	Mask Surgical Tie-On		50/Box
<b>846-0367</b>	Mask Infla Adult	Medium	50/Case
<b>153-0164</b>	Fluidshield Masks Wraparound	Tie-On	25/Box
<b>777-1971</b>	Filtron Mask Surgical Tie-On	Anti-Fog	50/Box
<b>606-9574</b>	Mask Premium Adult	Non-Con	30/Case
<b>153-0489</b>	Mask Laser Micron Filter	Tie-On	35/Box
<b>153-3753</b>	Fog-free Tie On Mask Surgical	Blue	50/Box
<b>153-9210</b>	Mask Surgeon Classic w/Ties	Blue	50/Box
<b>670-0734</b>	Mask Surgical Fog-free LF w/Derma	Touch Tape	50/Box
<b>153-4500</b>	Masks Surgical Duck Billed		50/Box
<b>791-0010</b>	Surgine II Tie On Mask AntiFog	Blue	60/Box

### ISOLATION GOWN

#### HENRY SCHEIN® Isolation Gown Regular

Specify:

<b>101-1789</b>	Yellow	10/Pack
<b>101-2585</b>	Blue	10/Pack



 HENRY SCHEIN®  
**SurgiTeam**  
SOLUTIONS FOR SURG-CENTERS

### STANDARD PACKS

#### Hand Pack

5/Case

**888-2345**

- 1 Cover Table 44 x 90
- 1 Drape Hand 114 x 143
- 1 Drape Half 44 x 60
- 1 Cover Stand Mayo
- 1 Tray 9 x 5 x 2
- 1 Bowl 1000cc/32 oz
- 1 Cup Medicine 2 oz
- 1 Xerofoam
- 10 Sponge Gauze 4 x 4 12-Ply
- 10 Sponge Gauze X-Ray
- 1 Bag Suture
- 1 Bag Ziplock
- 1 Blade 15 Case
- 1 Skin Marker w/Ruler/Label
- 1 Needle Counter 10 Ct Combo
- 1 Esmark 4" x 9' Latex-free
- 1 Cast Padding Webril 3"
- 2 Syringe 10cc Luer-Lok
- 1 Needle 18g x 1.5
- 1 Needle 25g x 1.5
- 4 Towel Cloth Blue
- 2 Cover Light Hdl Green
- 2 Gown, X-Large Non-RF
- 2 Towel, Abs White
- 1 Kimguard 24x24

#### Facial\ENT Pack

6/Case

**888-2352**

- 1 Cover Table 44 x 78
- 1 Drape Half 60 x 44
- 1 Drape Split Sheet 76 x 120
- 1 Cover Stand Mayo
- 1 Cup Medicine 2 oz
- 1 Bowl 500cc/16 oz
- 10 Sponge Gauze 12-Ply
- 1 Bag Suture
- 1 Bag Ziplock
- 1 Blade 15 Case
- 1 Marker/Ruler/Label
- 1 Needle Counter 10 Ct
- 1 Syringe 10cc Luer-Lok
- 1 Needle 27g x 1.25
- 3 Towel Cloth Blue
- 2 Cover Light Hdl Green
- 1 Gown, X-Large Non-RF
- 1 Towel, Abs White
- 1 Wrap 24 x 24
- 1 Gown, X-Large Non-RF

We can work with you to develop any custom pack that you need for your facility. Call your Henry Schein Sales Consultant with your procedure.

# spotlight on: surgical accessories

HENRY SCHEIN™  
**SurgiTeam**  
SOLUTIONS FOR SURGI-CENTERS

**INTEGRA**  
LIMIT UNCERTAINTY

## Complete Instrument Line and Exclusive Instrument Refurbishment and Repair Programs

Through our alliance with Integra, we offer high-quality instrumentation and an exclusive refurbishment and repair service to maximize your return on investment.

[www.henryschein.com/surgiteam](http://www.henryschein.com/surgiteam)



**Integra™ Miltex®**

## Silicone Coated Surgical Blades

Limit uncertainty with Integra™ Miltex Silicone Coated Blades which provides smooth, sharp edge incision while, at the same time, requiring less force.

The addition of silicone coating offers a significant improvement and smoother surgical incision performance when compared to tradition standard carbon or stainless steel blades.

- Each blade is packaged in a foil peel pack
- Blades are sterile-use with a 5-year shelf life
- Dispensing box of 100 blades

#10 953-3949  
#11 953-3950  
#15 953-3951

## MINOR PROCEDURE TRAYS

103-8211	Laceration Tray Sterile	Each
101-2708	Epidural Tray w/Tuohy 18 Ga. x 3½"	10/Case
100-4366	Minor Laceration Tray w/Instruments	Each
890-0927	Foley Catheter Tray 16 FR	Each
119-7874	Foley Catheter Tray 16 FR, 5cc Drain Bag	Each
890-7674	Curity™ Skin Scrub Tray	Each
890-0084	Wet Skin Scrub Tray	Each
641-7035	Scrub Care® Prep Tray w/Exidine®-4 (CHG)	20/Case
190-6626	Surgi Stat Single Basin Kit	8/Case
788-7759	Suture Removal Tray	Each

## MISCELLANEOUS

120-7345	Needle Counter Double Magnet	21/Box
120-5305	Needle & Blade Guard	12/Box
731-2652	Quicksmart™ Blade Removal System	Each

## STANDARD PACKS

153-6744	Basic Pack w/Gown	8/Case
643-9464	Basic Pack VI	Each
657-6429	Basic Set-up Pack	24/Case
153-7585	Laparotomy Pack	10/Case
101-2208	Laparotomy Pack w/Isoback Gown	4/Case
190-6349	Mini-Plus Surgical Set-Up Kit	10/Pack
153-3501	Head & Neck Pack #9194	6/Case
100-7227	Procedure Pack #3220	10/Box
608-8682	Surgical Set-Up Pack	14/Pack
643-7055	U-bar Pak III Breast/Chest	4/Case
643-1257	Universal Pack I	5/Case
101-2205	Universal Pack w/Iso-Bac Gowns	6/Case

*Call your Sales Consultant for more information on Surgical Instruments.*

## ADHESIVES



**Mastisol® Liquid Adhesives**  
Nonirritating and hypoallergenic. Will secure the most difficult of dressings for a prolonged period of time.

728-7106	½-oz Bottle
1-oz Bottle	w/Spray Pump
728-7424	15 mL
728-9210	2-oz Bottle
728-5234	48/Box

**Detachol® Adhesive Remover**  
Nonirritating, with a pleasant fragrance.

2-oz Bottle	Each
728-6839	Each w/Cap
4-oz Bottle	Each
729-2591	Each
2/3-cc Vial	Each
728-5346	48/Box



## CONTAINERS

### Specimen Containers

- Full 1-turn screw thread
- Translucent polypropylene container is tough, durable, nonbreakable, and inert
- Sterile containers have an integrity seal
- Color-coded caps: Green for sterile, White for non-sterile



Sterile, Individually Wrapped, w/Integrity Seal	
890-8761	4 oz., 100/Case
Sterile, Individually Wrapped, w/Integrity Seal	
890-3701	4 oz., 200/Case
Sterile, Bulk, w/Integrity Seal	
890-3930	4 oz., 100/Case

## MISCELLANEOUS

Gallant Disposable	
Safety Prep Razor	50/Box 267-6391
Distilled Water	4 Gallons/Case 950-9171



## TOP 5 INSTRUMENTS IN PLASTIC SURGERY FROM INTEGRA



**Webster**  
Needle Holder Delicate,  
953-9521 5" Each



**Brown Adson**  
Tissue Forceps  
953-2940 4 3/4" Each



**Halsted**  
Mosquito Forceps  
953-3372 5" Curved Each



**Eye Suture**  
Scissors Curved  
953-3098 4" Each



**Stevens**  
Tenotomy  
Scissors  
953-6959 4 1/8" Each

Instruments represent one of the most significant investments in today's surgical facility. Proper selection and care are essential to protecting your bottom line!

### SURGICAL SCALPELS



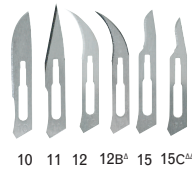
Standard Scalpel  
Safety Scalpel

#### CHOOSE FROM:

Standard Scalpels	Safety Scalpels	Size
Item Code	Item Code	
953-2331	953-1831	10
953-1971	953-6730	11
953-2844	953-7177	12
953-3446	953-2142	15
-	953-2785	15C
953-1913	-	20
953-3959	-	21
953-9645	953-8348	22
953-6206	-	23

10 scalpels/box

### SURGICAL BLADES



10 11 12 12B<sup>Δ</sup> 15 15C<sup>ΔΔ</sup>



20 21 22 23 25

#### CHOOSE FROM:

CS* Blades	SS** Blades	Size
Item Code	Item Code	
953-1378	953-6694	10
953-1774	953-7469	11
953-1981	953-7546	12
953-0460	953-6343	12B <sup>Δ</sup>
953-2041	953-7616	15
953-1088	953-7101	15C <sup>ΔΔ</sup>
953-5727	953-7810	20
-	953-7906	21
953-7319	953-8126	22
953-2370	953-8193	23
953-8243	953-3557	25

100 blades/box

\*Carbon Steel \*\* Stainless Steel  
<sup>Δ</sup>B is a double edged blade <sup>ΔΔ</sup>C is an angled blade

### INSTRUMENT CARE & CLEANING



**Surgical Milk**  
102-5539 64 oz. Bottle



**E-Z-Zyme®**  
953-2961 32/Box



**Instrument Prep Enzyme Foam**  
953-9364 24 oz. Bottle



**Instrument Cleaning Brush**  
953-9664 Each



### BIOPBLADE



**BiopBlade™ Sterile**

Item Code	Miltex #	Size
953-7731	33-100	50/Box

### HENRY SCHEIN® BIOPSY PUNCHES



#### Biopsy Punches Sterile

Blue					
900-4864	2.0mm	Ea.	900-4868	4.0mm	Ea.
900-4865	2.5mm	Ea.	900-4869	5.0mm	Ea.
900-4866	3.0mm	Ea.	900-4870	6.0mm	Ea.
900-4867	3.5mm	Ea.	900-4871	8.0mm	Ea.

# spotlight on: wound closure



positive results for life™

The five-year cure rates for Mohs approach 99% for new cancers and 95% for recurrent cancers.

Source: The American Society for Mohs Surgery



**Monosof™ 10" Sutures**  
Perfect for dermatology, biopsy wound, and other small closures.

Item Code	Size	Needle	Qty.
(294-0448)	4-0	C-1	12
(840-6454)	5-0	C-1	12
(840-6458)	6-0	C-1	12
(840-6455)	4-0	C-13	12
(840-6457)	5-0	C-13	12

An Open study of Full Tissue Skin Grafting (FTSG) concluded that n-butyl 2-cyanoacrylate adhesive (NBCA) is suitable for securing selected FTSG and provides a significant time-saving over the traditional approach of suturing such grafts into place.

Source -JAAD, 1999



positive results for life™

**Indermil® Tissue Adhesive**  
N-butyl 2-cyanoacrylate  
(840-7234).....12/Box



Visit: [www.henryschein.com/mohs](http://www.henryschein.com/mohs)

## V-Loc™ 180 and 90 Absorbable Wound Closure Device

### Wound Closure Evolved



Revolutionary technology that supports optimal patient outcomes by closing wounds securely without the need to tie knots.

Loop and barb combination	<ul style="list-style-type: none"> <li>Potential to reduce knot-related complications</li> <li>Close wounds up to 50% faster than conventional sutures of comparable holding strength.<sup>1,2</sup></li> </ul>
Unidirectional, shallow barbs with circumferential distribution	<ul style="list-style-type: none"> <li>Distributes tension throughout the wound</li> <li>Grasps tissue at numerous points spreading tension across the wound</li> <li>Evenly spaced barbs throughout the strand provide secure wound closure</li> </ul>
Welded loop design	<ul style="list-style-type: none"> <li>Anchors device securely at the beginning of the incision line, eliminating the need to tie a knot</li> </ul>
No change to standard wound closure technique	<ul style="list-style-type: none"> <li>Intuitive</li> <li>Easy to use</li> <li>Minimal learning curve</li> <li>Potential to eliminate the need for third-hand assistance when closing complex wounds</li> </ul>
Unique circular shape	<ul style="list-style-type: none"> <li>Designed to minimize package-related memory</li> <li>Easy loading into needle driver with no need to adjust position</li> </ul>
Premium Cutting and Taper Point Needles with NuCoat™ technology	<ul style="list-style-type: none"> <li>Smooth, easy passage through tissue</li> <li>Excellent multi-pass penetration for continuous closure</li> </ul>

Item Code	Needle Size	Suture Needle	Length	UOM
116-7369	180	4-0	P-12	12" 12/Box
116-7368	180	4-0	P-12	18" 12/Box
115-4651	180	4-0	P-12	6" 12/Box
115-7344	90	2-0	P-12	18" 12/Box
116-9460	90	3-0	P-12	12" 12/Box
116-4665	90	3-0	P-12	23" 12/Box
116-9459	90	3-0	P-12	6" 12/Box
116-7798	90	4-0	P-12	18" 12/Box
115-7696	90	4-0	P-12	23" 12/Box

## SURGICAL MESH

654-4732	Mesh Prolene		
	Polypropylene Hrn	6" x 6"	6/Box
116-8580	Mesh Vicryl Bag Spleen	10" x 12"	Box

## SURGICAL STAPLERS

777-8264	Precise Vista SS 35 Count	Wide Angle	Each
372-2139	35 Count	Wd Fix Head	6/Box
372-3300	AppliCasetor 35 Count	Regular Med	6/Box
698-0289	Appose 35	Wide	Each
777-5152	Precise Pgx 35 Count	Wide Pistol	6/Box
777-0622	Precise Skncls 25	Count, 25ct	12/Box
777-6729	Precise Vista 35 Count	Angled Head	6/Box
654-8056	Proximate Plus Ti 35Count	Wd Multi Rel	6/Box
113-4884	Proximate Px 35 Count	Wd Fix Head	6/Box
654-2571	Proximate Rh 35 Count	REG Rot Head	6/Box
358-3125	Proximate Rh Ti 35 Count	Wd Rot Head	6/Box
730-0034	Reflex One 35 Count	Wide ESCP	6/Box

## STAPLE REMOVERS

788-5805	Removal Stapler	Kit	Each
777-5253	Precise	Kit	Each
777-2222	Precise	Kit	10/Box

## CLOSURE STRIPS

120-9428	Proxi-Strip	1/2" x 4"	6x50/Box
654-5068	Proxi-Strip	1" x 5"	100/Box
777-8250	Steri-Strip	1/4" x 4"	50/Box
777-2084	Steri-Strip Flesh	1/2" x 2"	50/Box
101-6362	Steri-Strip Flesh	1/2" x 4"	200/Case
777-9647	Steri-Strip Tan	1/2" x 4"	50/Box
777-8945	Steri-Strip Tan	1" x 5"	25/Box
777-0843	Steri-Strip Tan	1/4" x 1 1/2"	50/Box
777-9416	Steri-Strip Tan	1/2" x 4"	50/Box
777-6538	Steri-Strip White	1/4" x 3"	50/Box
777-1358	Steri-Strip White	1/2" x 4"	50/Box
777-2051	Steri-Strip White	1/8" x 3"	50/Box
777-7052	Steri-Strip Closure Tan	1/8" x 3"	50/Box
447-3159	Suture Closure	1/2" x 4"	50/Box
840-5856	Suture Closure	1" x 5"	25/Box
120-4840	Wound Closure	1/2" x 4"	6x50/Box
900-4314	Wound Closure Opaque	1/2" x 4"	300/Box
900-4319	Wound Closure Opaque	1" x 5"	100/Box
900-4315	Wound Closure Opaque	1/4" x 3"	150/Box

OVER 60% OF SURGICAL SITE INFECTIONS OCCUR AT THE INCISION

# Plus SUTURES

ANTIBACTERIAL SUTURES

ANOTHER LAYER OF PROTECTION –  
ANOTHER LEVEL OF ASSURANCE

Plus Antibacterial Sutures kill bacteria and inhibit bacterial colonization of the suture<sup>1,3</sup>



ITEM CODE	ETHICON CODE	NEEDLE SIZE	SUTURE LENGTH	UOM
654-7475	MCP497G	3-0	18"	12/Box
654-9300	MCP427H	3-0	27"	36/Box
654-1377	MCP494G	4-0	18"	12/Box
654-4120	MCP496G	4-0	18"	12/Box
654-5371	MCP426H	4-0	27"	36/Box
654-4568	MCP493G	5-0	18"	12/Box
654-6133	MCP495G	5-0	18"	12/Box
109-2298	MCP492G	6-0	18"	12/Box

www.PlusSUTURES.com

**ETHICON, INC.**  
a Johnson & Johnson company

**SUTURES Plus**  
Antibacterial Suture

References: 1. Storch ML, Rothenburger SJ, Jacinto G. Experimental efficacy study of coated VICRYL plus antibacterial suture in guinea pigs challenged with *Staphylococcus aureus*. *Surg Infect (Larchmt)*. 2004;5:281-288. 2. Ming X, Nichols M, Rothenburger S. In vivo antibacterial efficacy of MONOCRYL plus antibacterial suture (polyglactone 25 with triclosan). *Surg Infect (Larchmt)*. 2007;8:209-213. 3. Ming X, Rothenburger S, Nichols M. In vivo and in vitro antibacterial efficacy of PDS+ plus (polydioxanone 25 with triclosan) suture. *Surg Infect (Larchmt)*. 2008;9:451-457. © Ethicon, Inc. 2009

TOP 25 SUTURES IN AESTHETIC MEDICINE



Item Code	Item Description	Mfg Part Number	Needle Size Suture Length	UOM
654-8680	Chromic Gut Monofil Beige P3	687G	5-0 18"	12/Box
654-4964	Chromic Gut Monofil Beige P3	1654G	4-0 18"	12/Box
654-3864	Chromic Gut Monofil Beige P3	686G	5-0 18"	12/Box
654-2259	Chromic Gut Monofil Beige PC1	1915G	5-0 18"	12/Box
654-6303	Chromic Gut Monofil Beige PC1	1916G	6-0 18"	12/Box
654-8061	Ethilon Nylon Monofil Black PS2	1667G	4-0 18"	12/Box
654-5740	Ethilon Nylon Monofil Black P1	697G	6-0 18"	12/Box
654-2114	Ethilon Nylon Monofil Black P3	698G	5-0 18"	12/Box
654-2793	Ethilon Nylon Monofil Black P3	1698G	6-0 18"	12/Box
654-0574	Monocryl Monofil Undyed P3	Y494G	4-0 18"	12/Box
654-1301	Monocryl Monofil Undyed P3	Y493G	5-0 18"	12/Box
654-4520	Monocryl Monofil Undyed PS1	Y936H	3-0 27"	36/Box
654-2935	Monocryl Monofil Undyed PS2	Y497G	3-0 18"	12/Box
654-2244	Monocryl Monofil Undyed PS2	Y496G	4-0 18"	12/Box
654-4686	Monocryl Monofil Undyed PS2	Y427H	3-0 27"	36/Box
654-1495	Monocryl Monofil Undyed PS2	Y426H	4-0 27"	36/Box
654-4518	PDS II Monofil Undyed PS2	Z497G	3-0 18"	12/Box
654-2000	PDS II Monofil Undyed P3	Z493G	5-0 18"	12/Box
654-5789	Prolene Monofil Blue P1	8697G	6-0 18"	12/Box
654-4502	Prolene Monofil Blue P3	8695G	6-0 18"	12/Box
654-6032	Prolene Monofil Blue P3	8698G	5-0 18"	12/Box
654-5195	Vicryl Undyed P-3	J493G	5-0 18"	12/Box
654-4427	Vicryl Undyed P-3	J494G	4-0 18"	12/Box
654-9934	Vicryl Undyed PS-2	J497G	3-0 18"	12/Box
654-6253	Vicryl Undyed PS-2	J496G	4-0 18"	12/Box

## DERMABOND ADVANCED Topical Skin Adhesive

A new applicator ergonomically designed for improved handling and easy coverage

- New angled tip for both fine and wide line application up to 15cm<sup>1</sup>
- Innovative applicator designed to easily activate and avoid clogging
- Innovative design provides greater control



Item#	Size	UOM
555-0356	0.7 mL	12 Applicators/Box
555-0357	0.7 mL	6 Applicators/Box

**ETHICON**  
**DERMABOND**  
ADVANCED  
TOPICAL SKIN ADHESIVE



# spotlight on: practice solutions

## EASY ONLINE ORDERING

[www.henryschein.com/aesthetics](http://www.henryschein.com/aesthetics)



[www.henryschein.com/ps-specials](http://www.henryschein.com/ps-specials)

## OFFICE SET-UP CONSULTATION



Let us visit your office to help you outfit and stock your new practice.

Call your Henry Schein Sales Consultant or **1-800-P.SCHEIN**

to schedule a complimentary consult!

Not ready for an appointment?

Visit [www.henryschein.com/plasticsetup](http://www.henryschein.com/plasticsetup) for a wish list for your future facility.

## REDUCING PRACTICE EXPENSES IS A SNAP!

- Ask your Sales Consultant to run a cost analysis of your supply savings
- Equipment and practice financing with flexible programs
- Credit card acceptance with competitive Visa/MasterCard rates. Call **1-800-443-2756** to discuss your financial options.

*Ask about our limited-time financing offers.*

**HENRY SCHEIN®**  
FINANCIAL SERVICES  
*Business Solutions for Healthcare Practitioners*

**HENRY SCHEIN®**  
MEDICAL

## HENRY SCHEIN EXCLUSIVES

We pair exceptional value thru our private brand and services with select product and technology partners.

[www.henryschein.com/exclusives](http://www.henryschein.com/exclusives)

Partners Include:

**Alma** Lasers™  
Wellbeing Through Technology

**3M™**

**AtmosAir**  
SOLUTIONS

**COOL-VIEW**

**HemaClear®**

**HENRY SCHEIN®**  
BRAND PRODUCTS

**medela**

**SOUND SURGICAL**  
TECHNOLOGIES LLC

**LBS Aesthetics**

## DIFFERENTIATE YOUR PRACTICE AND CLOSE MORE SURGERIES



**axisthree**   
...beyond imagination

*Anatomically accurate 3-D simulation tool*

Need marketing tools and services?

- Educational Webinars and Workshops
- In-Depth Marketing Audits
- Web and Social Media Marketing
- Practice Marketing Tools

**HEALTHCARE SUCCESS STRATEGIES**  
YOUR RESOURCE FOR BUILDING & SUSTAINING PROFITABLE GROWTH™

Ask for your **FREE HOUR** of Consultation  
[www.henryschein.com/practicemarketing](http://www.henryschein.com/practicemarketing)  
**1-800-797-1096**

**SurgiTeam™**  
SOLUTIONS FOR SURGI-CENTERS

## Simplify Supply Coordination and Save Precious Time...

- Enhanced center workflow
- Improved surgical case throughput
- Clinical supply chain management
- Financial services and customized supply cost-management programs
- Technology to improve center performance
- One-stop shopping for convenience in ordering
- Quarterly business reviews
- Facility design and set-up program according to your specifications
- In-service educational programs

## Henry Schein Financial Services

### Business Solutions For Healthcare Practitioners

Henry Schein Financial Services (HSFS) specializes in strategies for success. As your practice changes, you will need advice from specialists who understand your business needs. HSFS offers financial resources that can be tailored to your practice goals.

Contact us today to review our full array of financial resources developed to move your business forward with the competitive advantage you deserve.

- Equipment Financing
- Start-Up Financing
- Demographic Site Analysis Reports
- Henry Schein Credit Card
- Credit Card Acceptance
- Patient Collections



1.800.443.2756  
 hsfs@henryschein.com  
 www.henryschein.com/hsfs

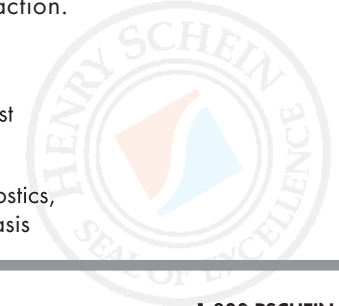
## Henry Schein Brand Products

### Depend On Us For Quality, Value, And Selection

Healthcare professionals around the world use Henry Schein Brand products to fulfill their practice supply needs. There are over 6000 quality products to choose from—each bearing the Henry Schein Seal of Excellence—your guarantee of satisfaction.

#### Henry Schein Brand products:

- Save on the products and supplies you use most
- Selected for high quality and high value
- Categories for disposables, instruments, diagnostics, and most common products used on a daily basis



1.800.PSCHEIN  
 www.henryschein.com/hsibrand

## Privileges Rewards

### Buy what you need, get what you want

With our **PRIVILEGES PROGRAM**, we believe in rewarding our loyal customers with products and services that will help their business stay competitive and profitable. By using any of our electronic ordering solutions, **PRIVILEGES** members earn Reward Points, which are automatically posted in your online **PRIVILEGES** Rewards account.

Sign up now to start enjoying all the special attention and exclusive benefits that you deserve. Membership is **FREE!**

To enroll or learn more, speak with your Sales Consultant or visit [www.henryschein.com/privilegesmd](http://www.henryschein.com/privilegesmd)



As a **PRIVILEGES** member, you'll receive:

- **PRIVILEGES** Rewards Points for all electronic purchases
- Value Certificates offer you the opportunity to earn Bonus Points
- **PRIVILEGES** Monthly E-Promotions
- Exclusive Quarterly E-Newsletters
- Access to Practice Marketing Services
- Discounts on ProRepair Services throughout the year



1.800.PSCHEIN  
 www.henryschein.com/medical



1.866.MED.VIPS  
 www.henryschein.com/privilegesmd  
 privilegesmd@henryschein.com

## Henry Schein Rx Samples Service

### Our Rx Samples Service is free, secure, and easy

Order pharmaceutical samples online—easily and conveniently.

Sponsored by leading pharmaceutical companies—with no cost to you. Sampling enables you to:

- Initiate patient treatment faster
- Increase patient compliance
- Provide valuable information about patient response to a new Rx regimen
- Increase patient satisfaction; patients appreciate the convenience, ease, and thoughtfulness of samples

Check your eligibility today!

Go to [www.henryscheinrxsamples.com](http://www.henryscheinrxsamples.com), sign up and in a few minutes you can start ordering samples:

- Access to leading brands not currently available to you today
- Easy to use; 3 minutes to register, 2 minutes to reorder
- Order multiple brands from different manufacturers from one central location



1.800.PSCHEIN  
 www.henryschein.com/medical



[www.henryschein.com/rxsamples](http://www.henryschein.com/rxsamples)

# Why Rely On Henry Schein?

*We are the global experts in alternate-care settings*

*In fact, Henry Schein serves more health care practitioners with products and services than any other company worldwide.*

**We deliver value chain business solutions through:**

- Consultation Services for practice upgrades and new setups
- Cost containment programs, including custom medical buying programs
- Specialized medical-surgical supplies, equipment and pharmaceutical offerings, including over 1,300 private brand alternatives
- Same-day shipping
- Technology solutions, including specialty Web sites for Dermatology and Plastic Surgery facilities
- Proprietary Henry Schein Financial Services programs to help with practice expansion, investments, and tax-planning



**Rely on Us**

[www.henryschein.com/aesthetics](http://www.henryschein.com/aesthetics)