

HENRY SCHEIN BRAND



"Does Henry Schein have private label products that are competitively priced and offer consistent high-quality as well?"

We  that!

HENRY SCHEIN IS THE ONLY SOURCE YOU NEED FOR SUPPLIES.

We are your direct source for all your clinical and office supplies. We stock the largest, most complete selection available for all types of specialties with more than 90,000 products ready to go.

Select from top national brands or save without compromising on excellence, with our own high-quality **Henry Schein Brand**. Our product roster includes all the products you use regularly. And, you can have absolute confidence they'll measure up to your standards, because they have already met our high standards to earn the **Henry Schein Seal of Excellence**.

Henry Schein Brand products:

- Save on the products and supplies you use most
- More than 5,000 Henry Schein Brand products...and growing
- Selected for high quality and high value
- Categories for disposables, instruments, testing kits, and more
- Opt-in program for maximizing your supply purchases
- Extra benefits for PRIVILEGES Members
- Consultation on product mix that is right for you

 **HENRY SCHEIN® BRAND**

To learn more about Henry Schein Brand contact:

1.800.PSCHEIN

www.henryschein.com/hsibrand



**Henry
Schein
Brand
Products**

NEW!

HENRY SCHEIN®
SELF-ADHERENT BANDAGES

Nonsterile

- Self-adherent: sticks to itself, not the skin
- Comfortable porous material: pain-free removal that won't damage skin



Tan, 2"ea
(900-4322)

Tan, 3"12/pkg
(900-4326)

Tan, 3"ea
(900-4323)

Tan, 4"12/pkg
(900-4327)

Tan, 3"24/pkg
(900-4330)

Tan, 4"ea
(900-4324)

Tan, 6"12/pkg
(900-4328)

Multicolor, 2"36/pkg
(900-4331)

Tan, 2"12/pkg
(900-4325)

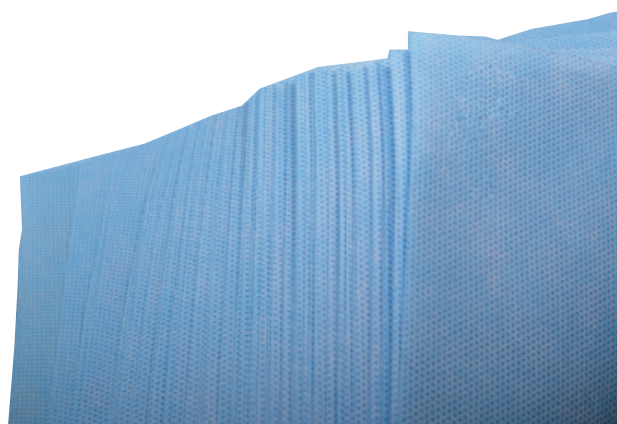
Tan, 2"36/pkg
(900-4329)

Multicolor, 2"36/pkg
(900-4332)

NEW!

HENRY SCHEIN®
BULK CSR WRAPS

- Single-ply sterilization wrap has uniform bonding pattern: softer on hands, is adhesive friendly, and promotes better air permeability
- Treated with an antistatic agent: reduces risk of static shock and operating room fires
- Single sheets: can be wrapped sequentially or nonsequentially



12" x 12"500/case
(900-4297)

20" x 20"500/case
(900-4295)

15" x 15"500/case
(900-4294)

24" x 24"500/case
(900-4296)



HENRY SCHEIN® URISPEC™ 11-WAY TEST STRIPS

Reagent Test Strip
For urinalysis by the dip-and-read technique. Similar to Multistix® 10 SG plus ascorbic acid. Tests for glucose, bilirubin, ketone, specific gravity, blood, pH, protein, urobilinogen, nitrite, and leukocytes. Also includes additional ascorbic acid analyte pad. The importance of the addition of an ascorbic acid analyte pad is that the glucose test must be repeated if the ascorbic acid reaction is positive. An ascorbic acid content of as little as 5 mg/dl (0.3 mmol) can interfere with a glucose assay in low concentrations. As with glucose detection, blood detection is also disturbed by low concentrations of ascorbic acid, whereas high ascorbic acid concentrations can interfere with the nitrate and bilirubin test zones.

- Addition of ascorbic acid
 - Same regulatory approval process as the leading brand
 - Desiccant is in the lid
 - Read at 60 seconds vs. variable time readings
 - Waived list approval for CLIA regulations
 - Same quality, better value
- (102-2285)100/btl**



HENRY SCHEIN® URISPEC™ 4-WAY URINE REAGENT STRIPS

- CLIA waived
 - Reagent test strips for protein, nitrite, glucose, and leukocytes
 - Test results may provide information regarding status of carbohydrate metabolism and kidney function
 - Entire strip is disposable; no additional laboratory equipment is necessary for testing
 - Storage recommended: 39–86° F (4–30° C) in a cool, dry location; do not freeze
 - Test results in 30–60 seconds
 - Easy to use
- (107-7157)100/box**



HENRY SCHEIN® ONE STEP+ H. PYLORI TEST DEVICE KIT

Rapid chromatographic immunoassay for the qualitative detection of IgG antibodies to *Helicobacter pylori* in whole blood, serum, or plasma to aid in the diagnosis of *H. pylori* infection in adults 18 years of age and older.

#IHP-402, Complete Kit

(900-4071)ea

Contains: 20 pouched test devices with disposable sample droppers, disposable, heparinized capillary tubes & dispensing bulb; 1 each: positive & negative control, sample buffer, procedure card & package insert.



HENRY SCHEIN® ONESTEP+ STREP A TEST

- New and improved: higher sensitivity (increased from 95.1% to 97%)
- Stronger, clearer, and distinct result lines
- Easier to read
- Positive result visible in as soon as 1 minute
- Negative result in 5 minutes
- Built-in procedural control for accuracy
- Can be used for culture confirmation

(107-4050)25/box

CPT Code: 87880QW



HENRY SCHEIN® ONE STEP+ MONO TEST DEVICE KIT

Rapid chromatographic immunoassay for the qualitative detection of heterophile antibodies to infectious mononucleosis in whole blood, serum, or plasma to aid in the diagnosis of infectious mononucleosis.

Complete Kit

(900-4070)ea

Contains: 20 pouched test devices with disposable sample droppers, disposable, heparinized capillary tubes & dispensing bulb; 1 each: positive & negative control, sample buffer, procedure card & package insert.



HENRY SCHEIN® URISPEC™ GP+A TEST STRIP

Test for glucose and protein, with ascorbic acid test for accuracy.

(100-6567)100/btl

HENRY SCHEIN® ONE STEP+ STREP A CASSETTE DIAGNOSTIC TEST

Rapid chromatographic immunoassay for the qualitative detection of strep A antigen from throat swab specimens to aid in the diagnosis of group A streptococcal infection.

- Superior clinical performance vs. competitor's test: 90% sensitivity vs. competitor's 87%; 94% specificity vs. 94%; 93% accuracy vs. 92%: confidence in test results
- Results in 5 minutes: rapid treatment decisions
- Convenient canister packaging and 24-month shelf life: convenient to store and less chance of product expiring before use
- Room-temperature storage: no need to warm reagents prior to use

Complete Kit

(900-4051)25/box

CPT Code: 87880QW



HENRY SCHEIN®

ONESTEP+ HCG URINE STRIP TEST

Rapid, chromatographic immunoassay for the qualitative detection of human chorionic gonadotropin (hCG) in urine to aid in the early detection of pregnancy.

- 25 mIU/mL hCG detection level
- 3-minute read time: rapid test results
- Clear red line appears in test region if positive, and clear control line will also be present: easy to interpret
- Built-in procedural control line: confirms correct procedural technique
- Greater than 99% accuracy: as accurate as other commercially available hCG membrane tests
- Room-temperature storage: refrigeration not necessary, so valuable refrigerator space remains available for other items
- Long, 2-year shelf life from date of manufacture

(900-4072)25/box

Contains: 25 pouched tests per kit & 1 package insert.

CPT Codes: Urine 81025, Serum 84703



HENRY SCHEIN®

OneStep Fecal Occult Blood Kit

Patient Mailer

Effective and rapid method for detecting occult blood in stool. Aids in diagnosis of asymptomatic gastrointestinal problems such as colorectal cancer, ulcers, polyps, anemia, and diverticulosis.

- Detects occult blood at levels of up to 1 part/30,000 (equal to all extra-sensitive tests on the market)
- Greater sensitivity to earlier detection of colorectal cancers and adenomas
- Unique formulation virtually eliminates all false positives
- Achieves 100% specificity and greater sensitivity by using a unique formulation in both developer and paper
- Simple and easy to use for patient and physician
- Uses actual hemoglobin for its positive controls (other tests use a chemical reaction to simulate positive control)
- Greater assurance of test reliability and readability
- Easier to interpret marginal occult blood in stool ("early detection")
- Darker blue reaction dye used
- Delivers a quality product in a cost-effective manner to the healthcare environment
- Price effective

(147-7182)ea

Contains: 50 triple 2-hole slides, 150 sticks, developer & 50 US postal mailers.



HENRY SCHEIN®

ONE STEP+ HCG URINE DEVICE TESTS

Rapid chromatographic immunoassay for the qualitative detection of human chorionic gonadotropin in urine or serum to aid in the early detection of pregnancy.

- Lateral flow format: simple and rapid procedure with no special training required
- Monoclonal and polyclonal antibody combination technology: selectively detects the claimed level of hCG; no cross-reactivity interference from elevated hFSH, hLH, or hTSH levels
- 25 mIU/mL hCG detection level: allows for qualitative detection of hCG
- 3-minute read time: rapid test results
- Clear red line appears in test region if positive, and clear control line will also be present: easy to interpret
- Built-in procedural control line: confirms correct procedural technique
- Greater than 99% accuracy: as accurate as other commercially available hCG membrane tests
- Room-temperature storage: refrigeration not necessary so valuable refrigerator space remains available for other items
- Long, 2-year shelf life from date of manufacture

25-Patient Kit

(900-4073)ea

Contains: 25 pouched tests per kit & 1 package insert.

100-Patient Kit

(900-4074)ea

Contains: 100 pouched tests per kit & 1 package insert.

CPT Codes: Urine 81025/Serum 84703



HENRY SCHEIN®

OneStep Fecal Occult Blood Single Slide

- Detects hemoglobin in 1 part/25,000
- Easy-to-interpret results
- 100% specificity: equivalent to extra-sensitive tests
- Positive samples/control retain color longer
- Stores at room temperature

(147-1246)100/box

Contains: 100-2-hole slides with both positive & negative on-slide monitors, 100 sticks & developer.

HENRY SCHEIN®

ONE STEP+ HCG COMBO DEVICE TEST

Rapid chromatographic immunoassay for the qualitative detection of human chorionic gonadotropin in urine or serum to aid in the early detection of pregnancy.

- Lateral flow format: simple and rapid procedure with no special training required
- Monoclonal and polyclonal antibody combination technology: selectively detects the claimed level of hCG; no cross-reactivity interference from elevated hFSH, hLH, or hTSH levels
- Urine and/or serum specimen type: offers test specimen options when using a urine/serum test
- 25 mIU/mL hCG detection level: allows for qualitative detection of hCG
- 3-minute read time (urine) and 5-minute read time (serum): rapid test results
- Clear red line appears in test region if positive, and clear control line will also be present: easy to interpret
- Built-in procedural control line: confirms correct procedural technique
- Greater than 99% accuracy: as accurate as other commercially available hCG membrane tests
- Room-temperature storage: refrigeration not necessary, so valuable refrigerator space remains available for other items
- Long 2-year shelf life from date of manufacture

25-Patient Kit

(900-4075)ea

Contains: 25 pouched tests per kit & 1 package insert.



HENRY SCHEIN®

OneStep Fecal Occult Slide Developer

- Detects hemoglobin in 1 part/25,000
- Easy-to-interpret results
- 100% specificity: equivalent to extra-sensitive tests
- Positive samples/control retain color longer
- Stores at room temperature

10-mL Bottle

(147-1963)ea



HENRY SCHEIN®

BLOOD LANCET

Sterile, Disposable

(100-0178)200/box

exam room supplies

HENRY SCHEIN® PREMIUM TABLE PAPER ROLLS

White

Designed and manufactured to provide strength, protection, and value.

Crepe, 18" x 125'

(100-9865)12/case

Crepe, 21" x 125'

(100-1657)12/case

Smooth, 18" x 225'

(100-9491)12/case

Smooth, 21" x 225'

(100-0177)12/case

Smooth, Heavy-duty, 14" x 225'

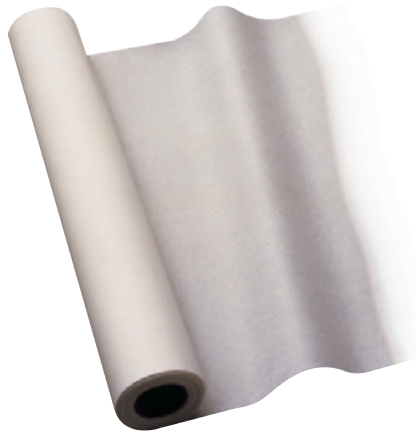
(104-4501)12/case

Smooth, Heavy-duty, 18" x 225'

(104-6092)12/case

Smooth, Heavy-duty, 21" x 225'

(104-5273)12/case



HENRY SCHEIN® PREMIUM FABRICEL® PILLOWCASE

1-Ply Tissue/Poly

This disposable pillowcase is super soft and strong because it's made from Fabricel material. By bonding supple tissue to polyethylene film with a heat lamination process, a unique material that is soft, strong, and tear resistant is created. This deluxe material prevents soak-through and gives us the most durable pillowcase available.

White, 21" x 30"

(101-2526)100/case



HENRY SCHEIN® PILLOWCASE

Tissue/Poly/Tissue

Provides linen-like softness for patient comfort and an inner poly barrier for extra protection. Strong and durable.

White, 21" x 30"

(104-9206)100/case

HENRY SCHEIN® HEADREST COVERS

Tissue/Poly

Soft tissue outside feels smooth and comfortable to the touch. The poly backing helps prevent moisture soak-through to headrest.

Small, 10" x 10" ..500/case

Specify:

White (101-7104)

Mauve (101-3198)

Blue (101-4595)

Lavender (102-5543)

Green (102-8451)

Regular, 10" x 13"

(13" Open Side) ..500/case

Specify:

White (101-8627)

Mauve (101-1051)

Blue (101-8955)

Green (102-5542)

Lavender (102-9374)



HENRY SCHEIN® DISPOSABLE HEADREST COVERS

Plastic

Act as a barrier to protect patient and equipment from cross contamination. Economical and convenient dispenser box.

Regular Size, White, 11½" x 10"

(102-6766)250/box

Regular Size, Clear, 11½" x 10"

(102-4894)250/box

Jumbo Size, White, 14½" x 10"

(102-8417)250/box

Jumbo Size, Clear, 14½" x 10"

(102-4895)250/box



pink ribbon products

HENRY SCHEIN® PINK RIBBON EXAM GOWN

Tissue/Poly/Tissue

Provides patient modesty for upper body exams and X-rays.

30" x 42"

(900-4277)50/case

HENRY SCHEIN® PINK RIBBON CAPE

Tissue/Poly/Tissue

Provides patient modesty for upper body exams and X-rays.

30" x 21"

(900-4278)100/case



Join
Henry Schein
in our Support
to help
Breast Cancer
Awareness!

HENRY SCHEIN® PINK RIBBON TABLE PAPER

Smooth, 21" x 225' Roll

(900-4276)12 rolls/case

HENRY SCHEIN® PINK RIBBON DRAPE

2-Ply Tissue

Provides patient draping for privacy.

40" x 48"

(900-4275)100/case

HENRY SCHEIN® PINK RIBBON 2-PLY PLUS POLY TOWEL

13" x 18"

(900-4274)500/case

HENRY SCHEIN® PINK RIBBON TRAY COVER

(900-4273)1000/case



HENRY SCHEIN®
DELUXE PREMIUM EXAM DRAPE
 3-Ply, All-Virgin Tissue
 Soft, opaque, and heavyweight, this embossed tissue drape with dependable wet strength is ideal for short to moderate exams. It conforms to the body and offers the ultimate in absorbency.
 White, 40" x 48"
(101-7084)100/case



HENRY SCHEIN®
PREMIUM EXAM DRAPES
 2-Ply, All-Virgin Tissue
 Made from 2-ply tissue to provide soft and strong coverage for most exams. They are designed to blanket the patient in lightweight comfort and are available in an array of colors to enhance office decor.

HENRY SCHEIN®
PREMIUM CAPES
 Tissue/Poly/Tissue, 30" x 21"
 These embossed capes, with a layer of poly film sandwiched between soft absorbent tissue, provide maximum coverage where the exam requires a waist-length garment. The layer of poly provides added strength, making them suitable for most office procedures.
 White
(101-6908)100/case
 Blue
(101-6599)100/case
 Mauve
(101-3029)100/case



HENRY SCHEIN®
EXAM GOWNS
 3-Ply Tissue, 30" x 42"
 Soft tissue provides patient comfort, while the embossed pattern provides extra strength. Plastic ties attached.
 White
(100-4471)50/case
 Blue
(100-4975)50/case
 Mauve
(100-7115)50/case



HENRY SCHEIN®
EXAM CAPES
 3-Ply Tissue, 30" x 21"
 White
(100-8821)100/case
 Blue
(100-2393)100/case
 Mauve
(100-2010)100/case



HENRY SCHEIN®
PREMIUM GOWNS
 Tissue/Poly/Tissue, 30" x 42"
 Layer of poly provides strength; layers of tissue absorb moisture. Opens front or back with attached elastic ties.
 Gowns50/case
 Specify:
 White **(100-2392)**
 Blue **(100-5728)**
 Mauve **(100-9652)**
 Peach
(100-6999)50/case

exam room supplies



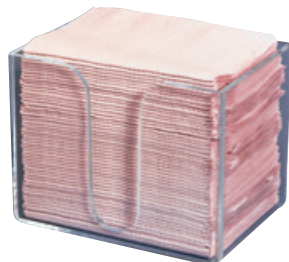
HENRY SCHEIN®
STANDARD PROFESSIONAL TOWELS
 3-Ply Paper
 3 plies of unsurpassed facial-quality tissue with unique properties of wet or dry tensile strength combined with facial softness and super absorbency.
 13" x 19"500/case

Specify:
 White (100-3161)
 Blue (100-0183)



HENRY SCHEIN®
DRI-GARD™ TOWELS
 2-Ply Tissue/1-Ply Poly
 2 plies of unsurpassed facial quality tissue plus a layer of poly film offer quick absorbency with a reliable moisture barrier.
 13" x 19"500/case

Specify:
 White (100-5715)
 Rose (100-6341)
 Yellow (100-9704)
 Green (100-1350)
 Aqua (100-9276)
 Beige (100-3501)
 Gray (100-1313)
 Peach (100-7384)
 Blue (100-7265)
 Lavender (101-0476)



HENRY SCHEIN®
TOWEL DISPENSER
 Made from clear Lucite® that allows towel colors to show. Can be placed on counter or attached to wall with screws. Holds approximately 50–13" x 19" towels.
 5" x 6" x 7"
 (100-4944)ea



HENRY SCHEIN®
PLASTIC CUPS
 Embossed Drinking Cups with Rolled Lips
 • Heavy, sturdy plastic: leakproof; won't crumple in hands
 • Releases easily from dispenser: easily accessible
 • Rolled lip: easier to drink
 • Embossed wall: nonslip
 • High-gloss finish and assorted colors: decorative

5 oz1000/case
 Specify:
 White (100-3902)
 Blue (100-4361)
 Yellow (100-1596)
 Beige (100-3193)
 Gray (100-0473)
 Dusty Rose (100-2104)
 Green (101-2443)
 Peach (101-6812)
 Lavender (101-2156)



HENRY SCHEIN®
DISPOSABLE WASHCLOTH
 Nonwoven Material
 Dry washcloths made from a strong, durable, and economical AIRLAID material. This absorbent, soft, and versatile washcloth is ideal for incontinence cleanups, bathing, and other patient applications.
 • Highly absorbent for maximum efficiency
 • Increased comfort due to the soft, thick material
 White, 10" x 13"
 (102-3781)500/case
 Contains: 50 washcloths per bag, 10 bags per case.



HENRY SCHEIN®
TRANSLUCENT PLASTIC CUPS
 Embossed Drinking Cups with Rolled Lips
 • Heavy, sturdy plastic: leakproof; won't crumple in hands
 • Releases easily from dispenser: easily accessible
 • Rolled lip: easier to drink
 • Embossed wall: nonslip
 5 oz
 (104-9869)100/pkg



HENRY SCHEIN®
FACIAL TISSUE
 2 Ply
 Soft, bright, absorbent tissue.
 White, 9" x 8"
 (900-4214)100/box



HENRY SCHEIN®
ULTRA SPUNLACE WASHCLOTH
 Non-sterile, Latex-Free
 Soft-spun dry washcloth made from 45% synthetic staple fibers and 55% natural cellulose pulp. Pattern embossed.
 10" x 13"
 (104-8247)500/case
 Contains: 50 washcloths per package, 10 packages per case.

HENRY SCHEIN® **COTTON TIPPED APPLICATORS**

May be used for wound care, specimen sampling, and personal hygiene.

- Quality exceeds FDA and GMP requirements: quality assurance
- Autoclavable or may be sterilized with gamma radiation or EtO: promotes sterility
- Individual bags include indicator strip

Non-sterile, 3"1000/box

Non-sterile, 6"1000/box

(100-9175)1000/box

Sterile, 6"200/box

(100-9249)200/box



HENRY SCHEIN® **COTTON BALLS**

- Uniform size and shape: hold together even when saturated
- Highest quality 100% pure white cotton: soft and absorbent
- Tamperproof package: safe
- Machine manufactured for exact control of weight and density: consistent shape

Sterile, Medium500/box

Non-sterile, Medium4000/case

(100-0468)4000/case

Non-sterile, Large2000/case

(100-1491)2000/case



HENRY SCHEIN® **TONGUE DEPRESSORS**

Highly polished and splinter-free. Designed for oral use or topical application.

- Sterilizable by autoclave, gamma radiation, or EtO: promotes sterility
- White birch has a high tensile strength: resists breakage
- Available in sterile and non-sterile packaging

Non-sterile, Junior 5½"500/box

(100-0758)500/box

Non-sterile, Regular 6"500/box

(100-2416)500/box

Sterile, Individually Wrapped, Regular100/box

(100-0238)100/box



HENRY SCHEIN® **WOODEN APPLICATORS/MIXING STICKS**

Plain Wood

6"

(100-9485)1000/box



HENRY SCHEIN® **HYDROGEN PEROXIDE SOLUTION, USP 3%**

16 ozea

(102-3516)ea

1 galea

(102-3518)ea

\$.99



HENRY SCHEIN® **ALCOHOL, RUBBING**

70% Isopropyl, Plastic Bottles

16 ozea

(102-4716)ea

1 galea

(102-4799)ea

Hazardous material



HENRY SCHEIN® **ALCOHOL PREP PADS**

Medium, 1½" x 2½"

Pad is saturated with 70% isopropyl alcohol and used for topical cleansing prior to injection or venipuncture.

Non-sterile200/box

(104-6352)200/box

Sterile200/box

(104-8298)200/box



HENRY SCHEIN® SHEER PLASTIC BANDAGE STRIPS

Sterile

¾" x 3"

(100-7565)100/box

Professional Tray Pack, 10 Trays

(100-4160)1500/box

1" x 3"

(100-8594)100/box

Professional Tray Pack, 10 Trays

(100-9490)1500/box



HENRY SCHEIN® ZOO ADHESIVE BANDAGES

Sterile, Latex-Free

Exclusive design for Henry Schein.

Individually wrapped adhesive bandage is sterilized for maximum protection of minor cuts, punctures, and abrasions. Nonstick, highly absorbent pad won't stick to wound. Air vents let air in and keep moisture out.

Stat Strip®, ¾" x 3"

(102-7026)100/box

Spot, ⅞"

(103-9563)100/box



HENRY SCHEIN® FLEXIBLE FABRIC ADHESIVE BANDAGES

¾" x 3"

(101-5515)100/box

1" x 3"

(101-6187)100/box

Professional Tray Pack, ¾" x 3"

(104-4205)1500/pkg

Professional Tray Pack, 1" x 3"

(104-9015)1500/pkg

Elastic Knuckle Bands

1½" x 3"

(101-1386)100/box



HENRY SCHEIN® ELASTIC BANDAGES

Latex-Free, 4½-yd Rolls

High cotton content to keep patients cool and comfortable. Durable bandages can be laundered, sterilized, and reused. Ideal for support and compression applications, such as treatment of varicosities, sprains, strains, and torn or injured ligaments.

2"

(104-7563)10/box

3"

(104-7565)10/box

4"

(104-7575)10/box

6"

(104-7580)10/box



HENRY SCHEIN® SHEER PLASTIC BANDAGE SPOTS

Sterile

• Nonstick pad: will not stick to wound; highly absorbent

• Air vents: let air in and keep moisture out

• Individually wrapped and sterilized: gives maximum protection

⅞"

(100-4111)100/box



HENRY SCHEIN® ELASTIC BANDAGES WITH VELCRO®

Latex-Free

Support and compression bandage knit with high-quality yarns to provide superior performance. Non-latex component offers latex-sensitive patients an alternative to "standard" elastic bandage: it can be worn comfortably without risk of allergic reaction. Velcro flap adheres to bandage without clips, pins, or tape, making it very user-friendly and patient-friendly.

2"

(104-7564)10/box

3"

(104-7569)10/box

4"

(104-7576)10/box

6"

(104-7584)10/box



HENRY SCHEIN® CONFORMING STRETCH GAUZE ROLLS

4.1 yd

Economical knitted bandage in various widths. High-quality materials consist of nylon, polyester, and cotton. Provides light compression as it cushions and protects. Also offers softness, breathability, and alleviation of irritation. Its low lint content reduces contamination to wound site.

Non-sterile12/bag

Specify:

1"

(104-2704)

2"

(104-8825)

Non-sterile, 3"

(104-8997)12/bag

Non-sterile, 4"

(104-2728)12/bag

Non-sterile, 6"

(104-9424)6/bag

Sterile, 2"

(104-2739)12/bag

Sterile, 3"

(104-9724)12/bag

Sterile, 4"

(104-6708)12/bag

Sterile, 6"

(104-4293)6/bag



HENRY SCHEIN® UNNA'S BOOT MEDICATED PASTE BANDAGES

Latex-Free, 10-yd Roll

Cotton gauze specially formulated with a zinc oxide emulsion. Used for the treatment of venous leg ulcers, edema, and dermatitis. Also soothes inflammation and rashes.

3" Width

(100-3444)ea

4" Width

(100-3256)ea



HENRY SCHEIN®
ALL-GAUZE SPONGES
Non-sterile

- 100% woven cotton
- Can be used for general cleaning, debriding, and prepping

8 ply, 2" x 2"200/pkg
(100-2524)
12 Ply, 2" x 2"200/pkg
(100-1570)
8 Ply, 3" x 3"200/pkg
(100-6458)
12 Ply, 3" x 3"200/pkg
(100-5004)
8 Ply, 4" x 4"200/pkg
(100-5952)
12 Ply, 4" x 4"200/pkg
(100-1444)



HENRY SCHEIN®
GAUZE PADS

- Sterile, 1's, 12-Ply
- 100% woven cotton
 - Highly absorbent
 - Can be used for general cleaning, debriding, and prepping

2" x 2"100/pkg
(100-4380)
3" x 3"100/pkg
(100-3963)
4" x 4"100/pkg
(100-2634)



HENRY SCHEIN®
PREMIUM SURGICAL
HYPOALLERGENIC PAPER TAPE

- Latex-Free
- Excellent adhesion
 - Pinked, nonfraying edges
 - Strong woven backing
 - Gentle removal
- 10-yd Rolls.....ea

Specify:
½", 24/box (101-4305)
1", 12/box (101-9673)
2", 6/box (101-1332)



HENRY SCHEIN®
PREMIUM ALL-GAUZE SPONGES

- Non-sterile
- Manufactured from USP 100% type VII cotton gauze that is bleached and processed to established standards. Soft and pliable. Protects as a wound covering as it provides maximum absorbency.

8 Ply, 2" x 2"200/pkg
(104-8197)
12 Ply, 2" x 2"200/pkg
(104-8588)
12 Ply, 3" x 3"200/pkg
(104-8195)
8 Ply, 4" x 4"200/pkg
(104-8194)
12 Ply, 4" x 4"200/pkg
(104-8198)



HENRY SCHEIN®
NON-WOVEN COTTON SPONGES

- Non-sterile, 4-Ply
- Highly absorbent 100% cotton. Packaged in a see-through bag with a convenient sterilization indicator.

2" x 2"100/pkg
(100-1090)
3" x 3"100/pkg
(100-3835)
4" x 4"100/pkg
(100-4420)



HENRY SCHEIN®
PREMIUM HYPOALLERGENIC
TRANSPARENT SURGICAL TAPE

- Latex-Free, 10-yd Roll
- Excellent adhesion. Porous, with flexible backing. Tears easily in both directions.
- Tapeea

Specify:
½", 24/box (101-6655)
1", 12/box (101-4645)
2", 6/box (101-9226)



HENRY SCHEIN®
PREMIUM ALL-GAUZE SPONGES
Sterile 2's, USP Type VII

8 Ply, 2" x 2"100/pkg
(101-4947)
12 Ply, 3" x 3"80/pkg
(101-1768)
8 Ply, 4" x 4"50/pkg
(101-5519)
12 Ply, 4" x 4"50/pkg
(101-0005)



HENRY SCHEIN®
CRITERION™ NONWOVEN SPONGES

Compare to NuGauze®

- Non-sterile, 4-Ply
- High-quality, excellently constructed rayon/poly-blend sponge that is soft and gentle to the touch and very comfortable against the skin. It is thicker than the standard sponge and with its open-weave construction, offers more absorbency than other sponges available. It can be used for all applications in wound-care treatment, making it an excellent multiuse sponge.

2" x 2"200/pkg
(104-2930)
3" x 3"200/pkg
(104-2410)
4" x 4"200/pkg
(104-2411)



HENRY SCHEIN®
PREMIUM HYPOALLERGENIC CLOTH
SURGICAL TAPE

- Latex-Free, 10-yd Rolls
- Reliable adhesion
 - Highly porous
 - Thin, flexible backing
 - Gentle removal
 - Easy tear
- Tapeea

Specify:
½", 24/box (101-3025)
1", 12/box (101-2323)
2", 6/box (101-5979)

The Power of Green

Introducing...Criterion™ ALOE GREEN

The powder-free Criterion Aloe Green Latex Exam Gloves provide an embedded aloe vera moisturizer that envelops your hands in soothing protection. These form-fitting natural latex gloves produce strong barrier protection while the gloves sure grip assists in any application.

HENRY SCHEIN® CRITERION™ ALOE GREEN POWDER-FREE LATEX EXAM GLOVES

Textured • Chlorinated

Gloves.....100/box

Specify:

X-small	(108-7848)
Small	(108-7850)
Medium	(108-8553)
Large	(108-7855)
X-large	(108-7856)



HENRY SCHEIN® CRITERION™ POWDER-FREE VINYL EXAM GLOVES

Non-sterile

Smooth • Nonchlorinated

Contains no natural latex. Maximal tactile sensitivity.

Gloves.....100/box

Specify:

X-small	(102-5721)
Small	(102-6721)
Medium	(102-5338)
Large	(102-7319)
X-large	(102-5377)



HENRY SCHEIN® CRITERION™ POWDER-FREE NITRILE EXAM GLOVES

Non-sterile

Textured • Nonchlorinated

Fully textured nitrile glove that offers excellent tactile sensitivity. Soft and stretchy, this nonchlorinated glove is the ideal alternative to latex.

Gloves.....100/box

Specify:

X-small	(102-9366)
Small	(102-5410)
Medium	(102-5411)
Large	(102-5413)
X-large	(102-7212)



HENRY SCHEIN® CRITERION™ CL POWDER- FREE LATEX EXAM GLOVES

Non-sterile

Textured • Chlorinated • Certified Protein Claim: £50 µg

An on-line chlorinated glove, textured for superior grip, comfortable fit, and low protein levels. Beaded cuff.

- Produced using state-of-the-art on-line chlorination technology for better consistency
- Textured for superior grip

Gloves.....100/box

Specify:

X-small	(102-5354)
Small	(102-8296)
Medium	(102-5355)
Large	(102-7763)
X-large	(102-5357)



HENRY SCHEIN® CRITERION™ LP LIGHTLY POWDERED LATEX EXAM GLOVES

Non-sterile

Textured • Nonchlorinated • Certified Protein Claim: None

Superior quality. Very lightly powdered. Textured finish with excellent tactile sensitivity. Beaded cuff. Natural color.

Gloves.....100/box

Specify:

X-small	(102-5425)
Small	(102-7597)
Medium	(102-5426)
Large	(102-5427)
X-large	(102-5428)

HENRY SCHEIN® CRITERION™ PC POWDER-FREE LATEX EXAM GLOVES

Non-sterile, Polymer Coated

Textured • Nonchlorinated • Certified Protein Claim: £50 µg

Standard in quality, powder-free gloves. Nonchlorinated, synthetic polymer coating eases donning. Textured finish for enhanced grip. Excellent tactile sensitivity. White.

- Nonchlorinated
- Made from synthetic polymer
- Beaded cuff
- Textured finish for enhanced grip
- Excellent tactile sensitivity
- White

Gloves.....100/box

Specify:

X-small	(102-5418)
Small	(102-5419)
Medium	(102-5421)
Large	(102-6730)
X-large	(102-5422)



HENRY SCHEIN® CRITERION™ LIGHTLY POWDERED VINYL EXAM GLOVES

Non-sterile

Textured • Nonchlorinated

Synthetic: contains no natural latex. Very lightly powdered clear vinyl. Very soft for better comfort.

Gloves.....100/box

Specify:

X-small	(102-5379)
Small	(102-5327)
Medium	(102-5329)
Large	(102-5332)
X-large	(102-5380)



CRITERION SURGICAL GLOVE'S



CRITERION™ LIGHTLY POWDERED LATEX SURGEONS' GLOVES

Compare to Triflex® Sterile Powdered Surgeons' Latex Gloves

Sterile

Smooth • Chlorinated • Certified Protein Claim: None

Henry Schein's Criterion brand of low-powder latex surgical gloves provides the optimal balance between barrier protection and tactile sensitivity. Super-soft latex film and anatomical design provide unprecedented comfort to reduce fatigue, even during the longest procedures. Beaded cuff allows easy donning—and, combined with the 12" length, holds the glove firmly to prevent roll-down or slippage. Satin-smooth finish feels like a second skin to ensure the very best sensitivity for delicate work. These gloves meet or exceed ASTM standards and are 100% air-inflation tested to ensure that strength, durability, and barrier protection are never compromised.

Gloves.....50 pair/box

Specify:

5½	(104-7721)
6	(104-3500)
6½	(104-9242)
7	(104-3501)
7½	(104-5920)
8	(104-4696)
8½	(104-5787)
9	(104-9192)



CRITERION™ POWDER-FREE LATEX SURGEONS' GLOVES

Compare to Micro-Touch® PF Latex Surgeons' Gloves

Sterile

Textured • Chlorinated • Certified Protein Claim: £50 µg

Henry Schein's Criterion brand of powder-free latex surgical gloves helps eliminate powder-related complications and irritation, yet still provides outstanding quality and performance you would expect from a premium surgical glove. Advanced polymer coating on inside surface allows glove to don easily, even when hands are damp or wet. Super-soft latex film and anatomical design provide unprecedented comfort to reduce fatigue, even during the longest procedures. With a microtextured surface and optimized tack level, Criterion provides excellent grip in wet and dry conditions and gives user unmatched tactile sensitivity for precise work. These gloves meet or exceed ASTM standards and are 100% air-inflation tested to ensure that strength, durability, and barrier protection are never compromised.

Gloves.....50 pair/box

Specify:

5½	(104-6125)
6	(104-5073)
6½	(104-9218)
7	(104-3502)
7½	(104-3503)
8	(104-3563)
8½	(104-7315)
9	(104-7227)

GLOVE CLUB®

Tomorrow's Gloves *Today!*™

We are proud to bring you our Glove Club line of gloves. This comprehensive offering provides high-quality gloves with unique features to meet the needs of the entire office. All Glove Club Brand gloves have been designed specifically to address the concerns of healthcare workers, concerns such as latex sensitivity, powder levels, and inconsistent sizing and fit.

Latex Powder-Free



CYBER-GEL® Powder-Free Latex Exam Gloves

Non-sterile

- Textured • Chlorinated • Certified Protein Claim: £50 µg
- Gel coated with enhanced donning effect
 - Textured for optimal grip
 - Excellent tactile sensitivity
 - Soft latex provides excellent fit to ensure ultimate comfort
 - Chlorinated
 - Powder-free
 - Contains 50 µg or less of extractable protein per gram

Gloves.....100/box

Specify:

X-small	(103-5123)
Small	(103-5133)
Medium	(103-5165)
Large	(103-5196)
X-large	(103-5121)



Sensi-Free® Powder-Free Latex Exam Gloves

Textured • Chlorinated • Certified Protein Claim: £50 µg

- Super-strong latex
- Textured surface provides excellent tactile sensitivity
- Softer latex for better comfort: helps to prevent hand fatigue
- Chlorinated for easier donning
- Contains 50 µg or less of total water extractable protein per gram

Gloves.....100/box

Specify:

X-small	(108-9971)
Small	(108-8916)
Medium	(108-8981)
Large	(108-9322)
X-large	(108-2025)



Zodiac™ Powder-Free Latex Exam Gloves

Smooth • Chlorinated • Certified Protein Claim: £50 µg

- Smooth surface with enhanced grip technology provides excellent tactile sensitivity
- Superior-quality latex provides maximum elasticity
- Beaded cuff for extra strength when donning
- Produced using an on-line chlorination process for better consistency
- Chlorinated
- Contains 50 µg or less of extractable protein per gram

Gloves.....100/box

Specify:

X-small	(103-2138)
Small	(103-2108)
Medium	(103-2167)
Large	(103-2124)



AloeSoft™ Powder-Free Latex Exam Gloves

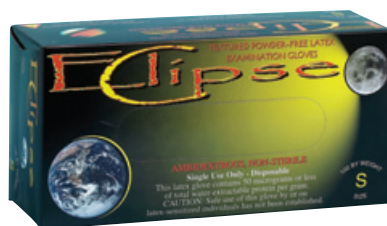
Non-sterile, with Aloe Vera Gel

- Textured • Chlorinated • Certified Protein Claim: £50 µg
- Aloe-vera coating on inside of glove helps moisturize and soothe dry, chapped hands.
- Fully textured for enhanced grip
 - On-line chlorination for better consistency
 - Natural color
 - Contains 50 µg or less of extractable protein per gram

Gloves.....100/box

Specify:

X-small	(107-6255)
Small	(107-9379)
Medium	(107-3672)
Large	(107-5139)
X-large	(107-7244)



Eclipse™ Powder-Free Latex Exam Gloves

Non-sterile

- Textured • Chlorinated • Certified Protein Claim: £50 µg
- Textured, wet-grip surface provides sure handling of instruments
 - Chlorinated
 - Polymer coated
 - Contains 50 µg or less of extractable protein per gram

Gloves.....100/box

Specify:

X-small	(103-1028)
Small	(103-1018)
Medium	(103-1067)
Large	(103-1063)
X-large	(103-1052)



Pure Grip® Powder-Free Latex Exam Gloves

Non-sterile

Textured • Nonchlorinated • Certified Protein Claim: £50 µg

- Polymer coated
- Naturally washed
- Chlorine-free
- Contains 50 µg or less of total water extractable protein per gram

Gloves.....100/box

Specify:

X-small	(103-2523)
Small	(103-2507)
Medium	(103-2504)
Large	(103-2563)
X-large	(103-2545)

GLOVE CLUB®

Tomorrow's Gloves Today!™

Latex Powdered



DermaTouch® Lightly Powdered Latex Exam Gloves

Smooth • Nonchlorinated • Certified Protein Claim: None

- Smooth surface finish
- Optimal tactile sensitivity
- Very durable during prolonged use
- Lightly powdered
- Excellent value

Gloves.....100/box

Specify:

X-small	(103-2360)
Small	(103-2372)
Medium	(103-2331)
Large	(103-2352)



DermaTouch® Powdered Plus Latex Exam Gloves

Smooth • Nonchlorinated • Certified Protein Claim: None

- Specially formulated latex for better elasticity
- Consistent fit every time
- Very lightly powdered
- Optimal tactile sensitivity

Gloves.....100/box

Specify:

X-small	(103-3775)
Small	(103-3772)
Medium	(103-3774)
Large	(103-3776)
X-large	(103-3778)



Supreme™ Lightly Powdered Latex Exam Gloves

Smooth • Nonchlorinated • Certified Protein Claim: None

- Super elastic for better comfort
- Very lightly powdered
- Uncompromising value

Gloves.....100/box

Specify:

X-small	(103-5700)
Small	(103-5701)
Medium	(103-5702)
Large	(103-5703)

Nonlatex Powder-Free



Nytrile™ Powder-Free Nitrile Exam Gloves

Non-Sterile, Blue

- Contains no natural latex
- Microtextured for enhanced grip and tactile sensitivity
- Extremely strong

Gloves.....100/box

Specify:

X-small	(103-8450)
Small	(103-8451)
Medium	(103-8452)
Large	(103-8453)
X-large	(103-8454)



Elastex™ Nitrile™ Powder-Free Nitrile Exam Gloves

Super Elastic, Blue, Mint Scented

Textured • Chlorinated

Produced with a unique latex-free material to prevent latex allergies.

- 100% latex-free
- Textured for better grip
- Super elastic nitrile for excellent comfort and fit
- Extremely strong and durable

Gloves.....100/box

Specify:

X-small	(103-3300)
Small	(103-3301)
Medium	(103-3302)
Large	(103-3303)
X-large	(103-3341)



EasyStretch™ Powder-Free Synthetic Exam Gloves

Non-Sterile

No latex proteins. "Next generation" of "stretch" synthetic gloves. Enhanced flexibility helps to prevent hand exhaustion. Distinctive white color easily identifies it as a nonlatex product.

- "Next generation" of "stretch" synthetic gloves
- Enhanced flexibility helps to prevent hand exhaustion
- 100% latex-free: no latex proteins
- Distinctive white color

Gloves.....100/box

Specify:

X-small	(104-6042)
Small	(104-6043)
Medium	(104-6045)
Large	(104-6046)
X-large	(104-6047)



HENRY SCHEIN® ALCOHOL HAND SANITIZER

This alcohol-based hand sanitizer is ideal for when soap and water are not readily available or as an adjunct to your current hand washing. Patented base-and-bottle system with easy-to-replace bottles. No more refilling bottles or chance of cross contamination. Fresh citrus scent. Contains 62.5% ethyl alcohol as the active ingredient.

10-oz Pump Bottle
(102-9642)ea



HENRY SCHEIN® MAXISPRAY® PLUS

Surface Disinfectant Cleaner
Hospital-level, general-purpose disinfectant/cleaner proven to kill TB in 5 minutes, HBV, HIV, and HCV in 3 minutes. It is also EPA-registered as a broad-spectrum disinfectant for both surface and immersion use. Bactericidal, virucidal, tuberculocidal, and fungicidal. Ready to use in cleaning and disinfecting equipment surfaces and noncritical areas.

24-oz Trigger Spray Bottle
(101-4114)ea
1-gal Refill
(101-0285)ea



HENRY SCHEIN® CSR WRAP

1-Ply Sterilization Wraps
12" x 12"
(100-3347)100/case
15" x 15"
(102-5193)100/case
18" x 18"
(100-4683)100/case
24" x 24"
(100-6950)100/case
30" x 30"
(100-8187)100/case
36" x 36"
(100-2016)100/case



HENRY SCHEIN® QUICK WIPES

Nonallergenic, premoistened, ready-to-use hand towelettes. Pleasant fragrance with lanolin, alcohol, and aloe. Refreshing aid for the office, home, or car.

- Soft, strong towelettes: allow easy and gentle cleansing of hands and face
- Effective and gentle formulation that contains aloe: formulated for fast drying and gentleness
- Convenient packaging: towelettes easily dispensed through office; each towelette is saturated with cleansing liquid

Pop-Up Container, 9" x 5½"
(104-4176)150/cont



HENRY SCHEIN® MAXICIDE® SOLUTION

2.5% Buffered
Glutaraldehyde
Solution

Can be used as a sterilant and high-level disinfectant for up to 28 days. 90 minutes at 77°F (25°C) for high-level disinfection; 10 hours at 77°F (25°C) for sterilization. Contains a surfactant to enhance the disinfection process and a rust inhibitor to reduce corrosion. No dilution required.

- Sterilization in 10 hours
- 28-day reuse life after activation
- Clear color before activation; turns blue after activation
- Activated solution contains anticorrosion and antioxidant ingredients
- Rapid and effective broad-spectrum kill
- Pleasant pine scent

1-qt Bottle
(102-6003)ea
1-gal Bottle
(102-7394)ea



HENRY SCHEIN® SELF SEAL STERILIZATION POUCHES

Peelable sterilization pouches. Superior quality. Triple seal for maximum protection. Indicator arrows change color when sterilizing conditions have been met in steam, vapor and EtO sterilization units. ADA accepted.

3½" x 5¼"
(108-6275)200/box
3½" x 9"
(108-9627)200/box
5¼" x 10"
(108-9121)200/box
7½" x 13"
(108-8303)200/box
9" x 15"
(108-2784)100/box



HENRY SCHEIN® MAXIWIPE™ GERMICIDAL CLOTH

Nonwoven, disposable cloth for use wherever control of hazardous cross contamination between treated surfaces is required. Cleans and disinfects common hard, nonporous surfaces and equipment, including stainless steel, Formica®, glass, tables, carts, counters, cabinets, telephones, and more.

Large
(106-6794)160/cont



HENRY SCHEIN® MAXICIDE® NS SOLUTION

2.6% Alkaline Glutaraldehyde Solution
Reusable sterilizing and high-level disinfecting 14-day solution. Broad-spectrum kill of pathogenic microorganisms. Specifically designed for scopes and ultrasound transducers. Contains no surfactants.

1-gal Bottle
(102-2866)ea



HENRY SCHEIN® MAXIZYME®

Dual Enzymatic Detergent
Low-foaming enzymatic detergent for use as a presoak, manual detergent, ultrasonic detergent, and evacuator cleaner. Dissolves blood, protein, tissue, and soil. Noncorrosive, nonflammable, and rust inhibiting. Concentrated and economical.

- Contains 2 gold-standard proteolytic enzymes for more effective cleaning
 - Safe for instruments
 - Less corrosive than distilled water
 - Dissolves and releases blood and tissue: minimizes handling and scrubbing of contaminated items
 - Nonfoaming: compatible with evacuators, ultrasonic units, and presoaks
- 1-gal Bottle
(101-9031)ea

HENRY SCHEIN® EAR LOOP PROCEDURE FACE MASKS

Latex-Free

Light, comfortable masks for extended wear when necessary. Ear loops are made from special stretch yarn: no irritating rubber or plastic touches skin. 3-ply, glass-free filter media is surrounded by soft, nonirritating inner and outer facing. Full-width flexible nosepiece provides fit and security. Manufactured to exceed all current ASTM F2100-03a standards.

Face Masks50/box

Specify:

White	(104-6611)
Blue	(104-3809)
Pink	(104-3730)
Yellow	(104-2849)
Lavender	(104-8600)



HENRY SCHEIN® EAR LOOP FACE MASK WITH EYE SHIELD

Latex-Free

Extra-protection pleated mask provides superior fluid protection and 99.6% BFE at 0.1 micron. Full coverage, antiglare eye shield for full splash protection.

Teal

(104-7321)25/box



HENRY SCHEIN® TIE-ON SURGICAL PLEATED FACE MASK

Glass-Free, Latex-Free

Triple-layer, fluid-resistant, and high filtration rate. Soft, lightweight, comfortable design. Manufactured to exceed all current ASTM F2100-03a standards. Cloth-like ties.

- Shingle pleats: eliminate ledge for fluid pooling
- Full-width covered nosepiece: ensures proper closure
- Polypropylene outer facing, polypropylene inner: less chance of wire dislodging

(104-6809)50/box



HENRY SCHEIN® COVER GOWNS

Full-length gowns made of fluid-resistant, nonwoven polypropylene material. Full cut, open neck, open back, and waist ties. Sewn neck binder and knit cuffs.

Gowns.....10/pkg

Specify:

Pink, Small/Medium	(100-6784)
Blue, Medium/Large	(100-5870)

Gowns.....10/pkg

Specify:

Pink, Large	(100-9392)
Blue, X-large	(100-5806)



HENRY SCHEIN® ISOLATION GOWNS

Durable single-ply polypropylene material. Glued construction with no stitch holes. Elastic cuffs. Excellent closure. Made in U.S.

- Durable polypropylene with glued seams: no stitch holes to allow for the passage of fluids or bacteria
- Elastic cuffs: creates secure closure
- Tape neck closure: easy to put on
- Waist tie: easy to open and close

Regular10/pkg

Specify:

Blue	(101-2585)
Yellow	(101-1789)

X-large10/pkg

Specify:

Blue	(101-7475)
Yellow	(101-4096)



HENRY SCHEIN® PROTECTIVE GOWNS

Liquid-proof poly-coated material. Long sleeves with knit cuffs, attached waist and neck ties, sewn neck binder, and open back.

- Soft, nonwoven, nonabsorbent poly-coated polypropylene material: comfortable, lightweight, and liquid-proof; provides extra protection against splashing liquids
- Full length: provides maximum coverage
- Sewn neck binder: reinforcement; gown will not tear easily
- Open back: increases ventilation
- Disposable: no laundering; no cross contamination

White.....10/pkg

Specify:

#1005849, Medium/Large	(100-5849)
#1006865, X-large	(100-6865)



HENRY SCHEIN® BOUFFANT CAPS

Full-size cut is sized properly to provide total hair coverage and allow for elastic to be comfortable. Prevents hair loss from contaminating sensitive area or site. Latex-free elastic minimizes allergic reaction. White for clean, aseptic appearance.

- Nonwoven polypropylene material: comfortable, lightweight, and fluid resistant
- Elasticized edge: completely covers hair; promotes sterile environment
- Disposable: no laundering; no cross contamination

21"
(102-4151)100/box

24"
(102-6614)100/box



HENRY SCHEIN® BOUFFANT CAPS

Poly, Blue

Full-sized cut provides total hair coverage and allows the elastic to be comfortable. Prevents hair loss from contaminating sensitive area or site. Latex-free elastic minimizes allergic reaction.

21"
(104-6032)100/box

24"
(104-6058)100/box



HENRY SCHEIN® SHOE COVERS

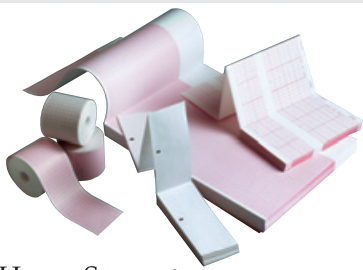
Non-sterile, Latex-Free, Blue

Nonconductive with a nonskid design. One size fits all.

(104-9452)50 pair/box

(104-6350)300/case

electrodes & ecg paper



HENRY SCHEIN® **ECG PAPER**

#007976, Z-Fold, Permatrace, Use with Burdick, 216 mm x 150' (102-8243).200 sheets/box

#007981, Z-Fold, Permatrace, Use with Burdick, 216 mm (102-5507).300 sheets/box

#007989, Z-Fold, Permatrace, Use with Burdick, 216 mm (102-5506).300 sheets/box

#M1707A, Z-Fold, Permatrace, Use with Hewlett-Packard M2481A, 216 mm (102-9711).200 sheets/box

#007984, Z-Fold, Permatrace, Use for Atria, Burdick Eclipse Plus, and Quest, 216 mm (900-4201).200 sheets/box

#007868, Z-Fold, Use with Burdick, 216 mm (102-5508).200 sheets/box

#007944, Z-Fold, Use with Burdick or #18416-002, Quinton Instruments Q750B, Q4500, 216 mm x 150' Roll (100-9529).....ea

#007966, Z-Fold, Use with Burdick, 216 mm (102-6077).200 sheets/box

#007979, Z-Fold, Use with Burdick, 216 mm (102-7659).300 sheets/box

#15022-001, Z-Fold, Use with Quinton Instruments, Q3000, Q4000, 216 mm (102-5576).200 sheets/box

#2157-012A, Z-Fold, Use with Schiller AT10, SP10 or #94010-000, Welch Allyn AT10, SP10, 210 mm (102-5511).150 sheets/box

#2157-017A, Z-Fold, Use with Schiller AT2 or #94002-000, Welch Allyn AT2, 210 mm (102-8240).150 sheets/box

#2157-014A, Z-Fold, Use with Schiller AT1, SP1 or #94001-000, Welch Allyn AT1, SP1, 90 mm (102-8961).280 sheets/box

F-Fold, Red Grid, Use with Quinton Instruments, 216 mm (102-6470)10/case

Use with Marquette (GE) 9402-024, E9001E, DF, 9402-037, 9402-040 (102-6883) 300 sheets/pad



Pneumo Check Print, for Use with Welch Allyn (979-8992).....5 rolls/box

HENRY SCHEIN® **ECG STRESS ELECTRODE**

Latex-Free

- Dynamic design for easy and accurate placement
- Super-tack adhesive for superior contact
- Type: foam, wet gel
- Size: 38 mm x 60 mm
- Applications: stress

(102-5541)50/pkg



HENRY SCHEIN® **ELECTRODE RESTING TAB**

Latex-Free

- Fishtail design creates a stable base
- Outstanding adhesive for superior contact
- Type: diagnostic tab
- Size: 21 mm x 34 mm
- Applications: resting/diagnostic ECG

(102-8339)100/pkg



HENRY SCHEIN® **ECG MONITORING ELECTRODE**

Latex-Free

- Designed for maximum adhesive coverage
- Super-tack adhesive for superior contact
- Type: foam, wet gel
- Size: 50 mm
- Applications: holter, stress

(102-8269)25/pkg



HENRY SCHEIN® **RAM Electrode ECG Foam**

(499-0374)60/box



HENRY SCHEIN® **ULTRASOUND GELS**

Blue

Multipurpose, hypoallergenic, medium viscosity ultrasound gel that is bacteriostatic for patient satisfaction. Excellent conductive agent with superior lubricating and clinical features for the most common professional diagnostic and imaging procedures. Simple operation and disposal. Long shelf life.

8.5 oz

(900-4094)ea

5 liter

(900-4095)ea



HENRY SCHEIN® **CLEAR ULTRASOUND GELS**

8.5-oz Bottle

(900-4352)ea

5-liter Bottle

(900-4353)ea



**HENRY SCHEIN®
DUAL-SCALE ORAL DIGITAL
THERMOMETER**

Readout in Fahrenheit or Celsius. Fast: records temperature in approximately 60 seconds. Beep sounds when reading is complete. Waterproof: can be completely submersed. Memory recall of last reading. Includes 5 probe covers.
(101-9395)ea

**HENRY SCHEIN®
LATEX-SAFE, DUAL-HEAD
STETHOSCOPE**

Excellent sound quality. Flexible, 22" Y tubing. Spare ear tips and diaphragm included. Adjustable chrome-plated brass binaural. Lightweight aluminum dual-head chest piece. Lifetime warranty.

Black
(101-7535)ea
Blue
(101-7533)ea
Gray
(101-7795)ea
Red
(101-7536)ea



**HENRY SCHEIN®
SPRAGUE-RAPPAPORT-TYPE
STETHOSCOPE**

The most popularly styled stethoscope on the market today, this stethoscope offers unlimited flexibility while maintaining acoustic qualities.

Black
(101-7618)ea



**HENRY SCHEIN®
PALM ANEROID
SPHYGMOMANOMETER**

This hand aneroid offers the practitioner many years of unequalled service. Deluxe German-made, chrome-plated gauge is backed by a lifetime calibration warranty; there is a 3-year warranty on the component parts. Deluxe calibrated nylon cuff and heavy-duty latex bladder will provide many years of uninterrupted service. Complete unit is packed in a deluxe carrying case.

Adult
(102-8353)ea



**HENRY SCHEIN®
LATEX-SAFE, ADULT, STAINLESS
STEEL STETHOSCOPES**

Offers unsurpassed quality and value. Features a deluxe stainless-steel chest piece, 22" tubing, a stainless-steel dual-innerspring binaural and 2 extra sets of soft ear tips.

Black
(102-7043)ea
Burgundy
(102-7044)ea

**Call Your Sales
Representative
for Pricing**

**HENRY SCHEIN®
PRECISION ANEROID
SPHYGMOMANOMETERS**

Economically priced for the cost-conscious healthcare provider who is looking for quality and affordability.

- Standard air-release valve
- Navy-blue calibrated nylon cuff
- Backed by a 5-year neoprene inflation system warranty and a 10-year calibration warranty
- Complete with zippered carrying case

Child
(101-7481)ea
Adult
(101-7469)ea
Large Adult
(101-7684)ea



HENRY SCHEIN® BRAND Blades and Scalpels



HENRY SCHEIN® SURGICAL BLADES

Sterile; individual foil pack. Computer-controlled grinding ensures consistent sharp edge. Special heat treatment minimizes breakage.

Stainless Steel100/box

Specify:

#10	(100-8976)
#11	(100-5794)
#12	(100-0247)
#15	(100-0249)
#20	(100-3494)
#21	(100-3535)
#22	(100-7976)
#23	(100-9296)

Stainless Steel, #25
(104-7452)100/box
Carbon Steel10/box

Specify:

#10	(100-3149)
#11	(100-0039)
#12	(100-0124)
#15	(100-1259)
#20	(100-2793)
#21	(100-8903)
#22	(100-8382)
#23	(100-6721)

Carbon Steel, #12B
(100-0395)10/box
Carbon Steel, #15C
(100-4013)10/box



HENRY SCHEIN® DISPOSABLE SCALPELS

Sterile

Individually peel-backed for convenience. Plastic handle with millimeter scale and durable stainless steel blade.

- European raw material: high-quality steel
- Sharp: clean, true, consistent cut
- Strong: reduced breakage
- Packaging: superior protection and handling
- Testing: consistent high quality; assured quality to international standards

Scalpels10/box

Specify:

#10	(100-8037)
#11	(100-5622)
#12	(100-7922)
#15	(100-5255)
#20	(100-6752)

#12B
(100-5496)10/box



HENRY SCHEIN® **INSTANT COLD COMPRESSES**

Single Use

- 5" x 5½"
(900-4207)50/box
- 5" x 7"
(900-4206)48/box
- 6" x 9"
(900-4205)24/box

HENRY SCHEIN® **X-RAY FILM—GREEN SENSITIVE**

Compatible with all rare-earth systems, this film can be processed in all popular brands of X-ray film developers, both automatic and manual.

- 7" x 17"
(900-4292)100/box
- 8" x 10"
(900-4285)100/box
- 10" x 12"
(900-4281)100/box
- 11" x 14"
(900-4287)100/box
- 14" x 17"
(900-4280)100/box
- 24 cm x 30 cm
(900-4286)100/box
- 30 cm x 35 cm
(900-4290)100/box

HENRY SCHEIN® **X-RAY APRONS—**

TECHNICIAN EXTRA

Covers from shoulders

to knees, straps tie in

back at the neck and

waist. Surface type:

all vinyl; lead equivalency:

0.5 mm; approximate size: 24" x 27".

- Multi-ply construction: aprons are pliable and comfortable
- Heavy-duty vinyl fronts: clean easily and are durable
- Nonslip foam backing: added support
- Extra long: protection for those working around radiation

Apronsea

Specify:

- Light Blue (100-7467)
- Beige/Tan (100-7355)
- Mauve (100-3512)
- Textured Gray (100-1762)



HENRY SCHEIN® **REUSABLE COLD OR HOT GEL PACKS**

Remains Flexible

- 4" x 6"
(104-5324)ea
- 5¼" x 10"
(101-0903)24/box



X-RAY FILM— **BLUE SENSITIVE**

- Blue, 10" x 12"
(900-4289)100/box
- Blue, 14" x 17"
(900-4288)100/box
- 8" x 10"
(900-4282)100/box
- 10" x 12"
(900-4283)100/box
- 11" x 14"
(900-4291)100/box
- 14" x 17"
(900-4284)100/box

HENRY SCHEIN® **X-RAY APRONS—**

TECHNICIAN

Covers from shoulders

to knees, straps tie in

back at the neck and

waist. Surface type:

all vinyl; lead equivalency:

0.3 mm; approximate size: 24" x 27".

- Multi-ply construction: aprons are pliable and comfortable
- Heavy-duty vinyl fronts: clean easily and are durable
- Nonslip foam backing: added support
- Extra long: protection for those working around radiation

Apronsea

Specify:

- Light Blue (100-7058)
- Beige/Tan (100-5444)
- Mauve (100-5372)
- Textured Gray (100-3250)



HENRY SCHEIN® **AUTOMATIC A & B PROCESSING SOLUTIONS**

Premixed, ready-to-use automatic processing solutions that are designed for use in all brands of automatic roller-type processors.

- Suitable for all brands of dental X-ray film: cost-effective
 - Ready to use: no mixing required; no mess
 - Long shelf life: extended use
- Developer and Fixer Set
(101-5075)ea

Contains: 2 gal each developer & fixer.

Developer Only
(101-4405)4/case

Contains: 4 gal.

Fixer Only
(101-7957)4/case

Contains: 4 gal.



HENRY SCHEIN® **FILM HANGERS**

4 Clips, Slide-in Type, 8" x 10"
(100-3462)ea



HENRY SCHEIN® **FLOATING X-RAY THERMOMETER**

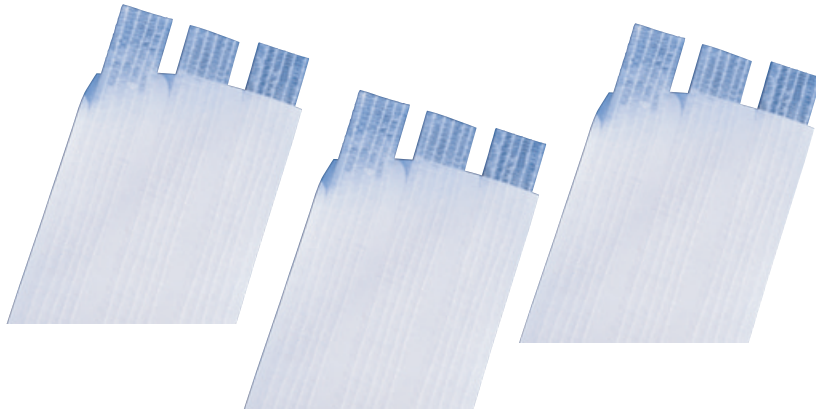
(100-8280)ea



HENRY SCHEIN® **X-RAY APRON HANGER**

For adult or child cling shield. Helps prolong the life of X-ray aprons.
(100-3530)ea

HENRY SCHEIN® BRAND



**NEW from
Henry Schein!**

$\frac{1}{8}$ " x 3"50/box
(900-4317)
Contains: 5 strips per envelope.

$\frac{1}{4}$ " x $1\frac{1}{2}$ "50/box
(900-4316)
Contains: 6 strips per envelope.

HENRY SCHEIN® WOUND CLOSURE STRIPS

- Hypoallergenic medical-grade adhesive: excellent adhesion while still gentle to the skin
- Color-coded packaging: quick identification of size
- Includes bilateral nylon filaments: makes for a high tensile strength

$\frac{1}{4}$ " x 4"50/box
(900-4315)
Contains: 3 strips per envelope.

$\frac{1}{2}$ " x 4"50/box
(900-4314)
Contains: 6 strips per envelope.

$\frac{1}{4}$ " x 4"50/box
(900-4318)
Contains: 10 strips per envelope.

1" x 5"25/box
(900-4319)
Contains: 4 strips per envelope.

**NEW from
Henry Schein!**

HENRY SCHEIN® PGA (POLYGLYCOLIC ACID) ABSORBABLE SUTURES

Compare to Vicryl
 $\frac{3}{8}$ Circle, 18"

Synthetic absorbable braided sutures have a smooth, low-friction coating that reduces tissue drag. They retain approximately 50% of their initial strength at 2 weeks and 20% at 3 weeks. PGA is ideal for skin and mucosa closings and can be used in most areas of the body.

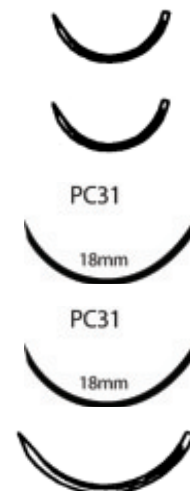
**Precision Reverse Cutting,
Undyed Braided**
C3, 5/012/box
(900-4417)

C3, 4/012/box
(900-4418)

PC31, 5/012/box
(900-4421)

PC31, 4/012/box
(900-4419)

Reverse Cutting, Violet Braided
C6, 4/012/box
(900-4420)



scissors

ITEM CODE	ITEM DESCRIPTION	TIP	TYPE	SIZE	PRICE
Iris Scissors					
(102-5248)	Straight	Sharp, Delicate	German	3-1/2"	
(101-6893)	Straight	Sharp	German	4"	
(100-8118)	Straight	Sharp	German	4-1/2"	
(100-2767)	Straight	Sharp		4-1/2"	
(102-3439)	Curved	Sharp, Delicate	German	3-1/2"	
(101-8111)	Curved	Sharp	German	4"	
(100-5880)	Curved	Sharp	German	4-1/2"	
(100-8820)	Curved	Sharp		4-1/2"	

Bandage & Utility Scissors

(104-9717)	Lister Bandage Scissor	Extra Fine	German	3-1/2"	
(104-8240)	Lister Bandage Scissor	Extra Fine	German	4-1/2"	
(100-6589)	Lister Bandage Scissor	Extra Fine	German	5-1/2"	
(100-1087)	Lister Bandage Scissor	Extra Fine		5-1/2"	
(101-5267)	Lister Bandage Scissor	Extra Fine	German	7-1/4"	
(100-3334)	Lister Bandage Scissor	Extra Fine		7-1/4"	
(104-5841)	Lister Bandage Scissor with large finger ring		German	8"	
(104-9212)	Utility & Bandage Scissors		German	6-1/2"	
(104-9280)	Utility & Bandage Scissors		German	7-1/2"	

Suture & Stitch Scissors

(100-1420)	Littauer Jr. Stitch Scissors		German	4-1/2"	
(100-6306)	Littauer Jr. Stitch Scissors			4-1/2"	
(100-2354)	Littauer Stitch Scissors		German	5-1/2"	
(100-5115)	Littauer Stitch Scissors			5-1/2"	
(100-0109)	Long Stitch Scissors		German	6-1/4"	
(100-0353)	Northbent Stitch Scissor Curved		German	5-3/4"	
(104-8241)	O'Brien Stitch Scissors Angled	Sharp	German	3-3/4"	
(104-7439)	Shortbent Stitch Scissor Curved	Delicate	German	3-1/2"	
(100-6024)	Spencer Stitch Scissors		German	3-1/2"	
(100-9827)	Spencer Stitch Scissors			3-1/2"	
(100-1826)	Wire Cutting Scissors	Angled	German	4-3/4"	
(100-2591)	Wire Cutting Scissors	Angled		4-3/4"	

dressing & tissue forceps

Adson Dressing Forceps

(101-6279)	Serrated, Delicate		German	4-3/4"	
(100-5659)	Serrated, Delicate			4-3/4"	

Micro Adson Dressing Forceps

(102-8861)	Serrated 0.5mm wide		German	4-3/4"	
------------	---------------------	--	--------	--------	--

Adson Tissue Forceps

(101-4803)		1x2 Teeth	German	4-3/4"	
(100-5891)		1x2 Teeth		4-3/4"	
(102-3435)	Delicate, Cross-serrated Tips	1x2 Teeth	German	4-3/4"	
(101-6905)	With Tying Platform	1x2 Teeth	German	4-3/4"	



Iris Scissors,
Straight



Lister Bandage
Scissor



Littauer Jr. Stitch
Scissors



Spencer Stitch
Scissors



Adson Dressing
Forceps

URISPEC™ 11-WAY TEST STRIPS

Reagent Test Strip

For urinalysis by the dip-and-read technique. Similar to Multistix® 10 SG plus ascorbic acid. Tests for glucose, bilirubin, ketone, specific gravity, blood, pH, protein, urobilinogen, nitrite, and leukocytes. Also includes additional ascorbic acid analyte pad. The importance of the addition of an ascorbic acid analyte pad is that the glucose test must be repeated if the ascorbic acid reaction is positive. An ascorbic acid content of as little as 5 mg/dl (0.3 mmol) can interfere with a glucose assay in low concentrations. As with glucose detection, blood detection is also disturbed by low concentrations of ascorbic acid, whereas high ascorbic acid concentrations can interfere with the nitrate and bilirubin test zones.

- Addition of ascorbic acid
- Same regulatory approval process as the leading brand
- Desiccant is in the lid
- Read at 60 seconds vs. variable time readings
- Waived list approval for CLIA regulations
- Same quality, better value



 HENRY SCHEIN®

(102-2285)..... 100/btl

Henry Schein, Inc. is a FORTUNE 500® Company. Henry Schein Common Stock trades on the NASDAQ Stock Market® under the symbol HSIC.

Offer ends 5/30/2008

Call:
1-800-P-SCHEIN
(1-800-772-4346)
8am-9pm (et)

Fax:
1-800-329-9109
24 Hours

www.henryschein.com/hsibrand

Due to manufacturer price increases, prices are subject to change without notification.

Offer valid on our full array of products. Upon any request by Medicare, Medicaid, Tricare or other payer, you must report the value of any benefit received from a discount program (e.g., points redemptions, gifts or other special awards).

©2008 Henry Schein, Inc. No copying without permission. Not responsible for typographical errors. No adjustments from prior sales. Offer not to be combined with other promotions and/or special contract pricing. Void where prohibited.

08MS7796-01

 HENRY SCHEIN®
Henry Schein, Inc. • 135 Duryea Road • Melville, NY 11747

PRSRT STD
U.S. POSTAGE
PAID
HENRY SCHEIN, INC.