



MEDLINE **TEXTILES**  
For Healthcare Professionals

# A Ninety-Year History of Innovation in Healthcare Textile Products

We did not become the nations largest supplier and manufacturer of healthcare textiles overnight. Our roots go back more than 90 years and include a long list of innovative product ideas that are today's industry standards. We are constantly striving to develop better products and new ideas that will improve patient care and simplify the job of the healthcare provider. Medline pioneered colored scrubwear, printed patient gowns and knitted fitted contour sheets.

## **Able to Personally Serve Your Needs**

Medline has more than 1100 dedicated sales representatives. We also have specialized textile experts that are able to meet with you and address your needs. With 90 years of experience in the textile industry, Medline has the solution.

## **We Deliver True Value**

Medline understands that controlling costs while still maintaining quality products and services is a top priority. We are well known for offering the most advanced and creative cost control programs in the industry. Furthermore, we offer custom-tailored programs, consulting services and hands-on management of your linen distribution. We have the people, the programs and the products to deliver true value.

# 1100

**Medline has more than 1100 dedicated sales representatives.**

# 98%

**Medline is proud of the fact that we fill more than 98 percent of our textile orders within 24 hours.**

## **Service Is More Than a Word. It's a Promise.**

Over the past five years, Medline has been the fastest-growing distributor of medical and surgical supplies in the U.S., serving as the primary distributor to over 450 major hospitals and healthcare systems. As a leading distributor, Medline offers a comprehensive array of consulting and management services encompassing the supply chain and logistics, utilization and standardization, business tools and enhanced reporting capabilities and on-staff clinicians.

Medline has a growing network of 50 manufacturing and distribution centers worldwide, as well as an expanding, dedicated transportation fleet with over 200 vehicles in a variety of sizes to fit customers' specific delivery needs. The fleet is equipped with the latest navigation devices for enhanced order tracking and communication.

To minimize backorders, we maintain the world's largest healthcare textile inventory just to avoid the Problem.



**1940's**

Industrial Uniform  
Manufacturer

**1950's**

Introduction of  
Surgeon Gowns

**1966**

Medline Industries, Inc.  
was formed

**Today,**

Medline is one of the  
largest suppliers of  
textiles exclusively to the  
healthcare marketplace



## Scrubs, Labwear & Uniforms

Medline Industries, Inc. was founded in 1966, but its roots date back 90 years to when it started as a garment manufacturer.

Today, Medline is one of the largest suppliers of textiles exclusively to the healthcare marketplace. At Medline, your apparel needs are covered. We offer a wide variety of scrubs, uniforms, lab coats and disposable protective apparel. You'll also find Medline exclusives made with revolutionary, high-performance fabrics.



## Look for the greensmart logo on products throughout this catalog.

Greensmart products go through a rigorous review and certification for sustainability throughout the entire product lifecycle, from production and transport through use and disposal.

### The greensmart Program: Sustainable Products, Consulting, Education and More

The greensmart program from Medline helps you quantify and report your ongoing sustainability efforts—both financially and environmentally. Because sustainability isn't only about doing what's green, it's also doing what's smart.

We call that being ecofriendly and economical. More information is at [www.medline.com/greensmart](http://www.medline.com/greensmart).



## Contents

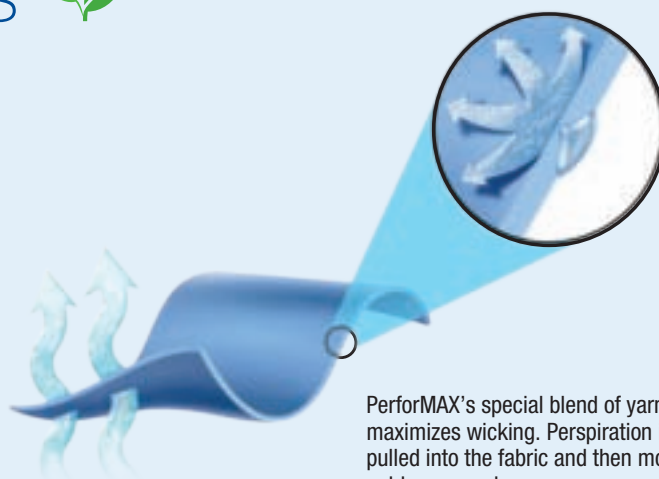
PerforMAX Scrubs	4-7
ComfortEase Scrubs	8-13
AngelStat Scrubs	14-17
Scrub Prints	18-19
Encore Scrubs	20-21
Colors & How to Order	22-26
Lab Wear	27-33
Barrier Coats	34-35
Isolation Gowns	36-37
Polos	38-40
T-Shirts	41
Industrial & Twill Work Shirts	42-43
Industrial Pants & Fleece	44-45
Pincord Uniforms	46-47
Aprons, Smocks & Chef Uniforms	48-49
Candystripe Uniforms	50

## A Medline Exclusive

# PerforMAX™ Scrubs

**Cool, comfortable performance apparel.**

PerforMAX™ high-performance, 100% synthetic scrubs won't fade or shrink. The revolutionary fabric performs like athletic wear to move heat and moisture away from the skin while remaining light and dry. PerforMAX™ durable, finely-woven fabric stands up to the rigors of everyday wear. The incredibly soft, smooth texture glides easily without catching or grabbing – and keeps you cool. But don't let the softness fool you. These scrubs are tough enough to hold your daily necessities – from cell phones and pagers to scissors and watches – without sagging or bagging.



PerforMAX's special blend of yarns maximizes wicking. Perspiration is pulled into the fabric and then moved out to evaporate away.

## Color & Size Selector

For items on pages 4-5

### How to put together an item number

▲ Style Number + ■ Color + ◆ Size

9 1 0 | J C B | X X L - C M

▲ Style   ■ Color   ◆ Size   Color-Coding

### ◆ Available in generously cut sizes

XS	Extra Small
S	Small
M	Medium
L	Large
XL	Extra Large
XXL	2X-Large
XXXL	3X-Large
4XL	4X-Large
5XL	5X-Large

Not all sizes available in all colors.

### ■ Color Selection

NTZ	Misty
NNT	Navy
JRL	Royal
NTH	Ciel Blue
JWN	Wine
JCB	Caribbean Blue
JEG	Evergreen
NTJ	Jade

### Color Coding

-CM	Medline
-CA	Angelica

For our complete selection of Scrub colors and styles please see pages 22-27

## PerforMAX™ pOweR Reversible Long Sleeve Unisex Scrub Top



### ▲ Style 819

Made from durable, 100% PerforMAX material, this reversible unisex V-neck scrub top features inset stretch knit sleeves that fit tight on the arms and a placket at the neck for modesty. It also has both a chest pocket and lower pocket.

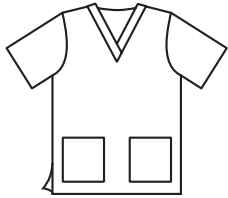
**Not available in Black, Royal, Wine, Caribbean Blue, Evergreen and Jade.**





# PerforMAX™ Scrub Tops

## PerforMAX™ V-Neck Scrub Top, Tunic



### ▲ Style 839

Ladies classically styled V-neck pullover tunic. Features two lower pockets, side slits for a comfortable fit, with a scissors holder and pen holder in the right pocket as well as vents at the side for a comfortable fit.



## PerforMAX™ Mock Wrap Tunic Scrub Top



### ▲ Style 881

Ladies V-neck top has modern flare with a cross over neckline. Features two lower pockets with scissor holder and pen holder and side vents for easy movement. Elastic gather in the back makes for a great fit that is flattering for any figure. Slightly longer styling as well as a shallow V allow for complete modesty.



## PerforMAX™ Unisex Reversible V-Neck Scrub Top



### ▲ Style 810

Unisex V-neck scrub top is made from low-linting 100% polyester PerforMAX material. Features reversible chest pocket. Set-in sleeves and double needle seams. 6-sided pocket to prevent lint buildup.

**Color Coding:** CM Medline, CA Angelica



## PerforMAX™ Unisex Snap-Front Warm-Up Jacket



### ▲ Style 829

This unisex warm-up jacket has a snap front and collarless neckline. Jacket features color matched rib knit cuffs and two lower pockets; right pocket has scissors holder.



**A Medline Exclusive**

# PerforMAX™ Scrub Pants

**Cool, comfortable performance apparel.**

## Color & Size Selector

For items on pages 6-7

### How to put together an item number

▲ Style Number + ■ Color + ◆ Size

9 1 0 | J C B | X X L - C M

▲ Style   ■ Color   ◆ Size   Color-Coding

#### ◆ Available in generously cut sizes

XS	Extra Small
S	Small
M	Medium
L	Large
XL	Extra Large
XXL	2X-Large
XXXL	3X-Large
4XL	4X-Large
5XL	5X-Large

*Not all sizes available in all colors.*

#### ■ Color Selection

NTZ	Misty
NNT	Navy
JRL	Royal
NTH	Ciel Blue
JWN	Wine
JCB	Caribbean Blue
JEG	Evergreen
NTJ	Jade

#### Color Coding

-CM	Medline
-CA	Angelica

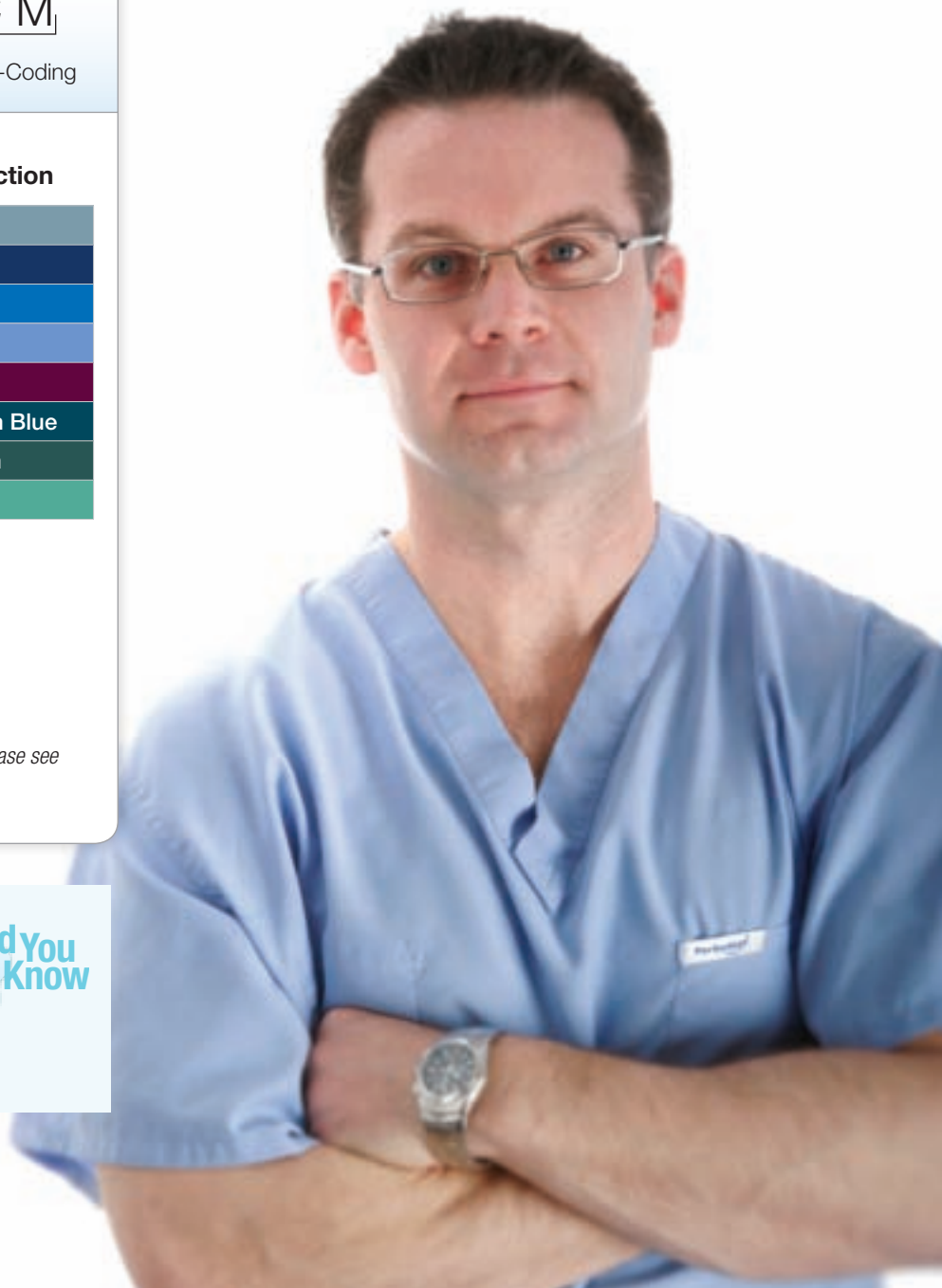
*For our complete selection of Scrub colors and styles please see pages 22-27*

AORN recently revised its Recommended Practices for Surgical Attire<sup>1</sup> to include stronger recommendations for donning safe surgical attire, based on emerging evidence showing a connection between attire and possible risk of infection.



<sup>1</sup> AORN's 2011 Perioperative Standards and Recommended Practices. Available at: <http://www.aorn.org/>. Accessed December 9, 2011.

To order, please call  
**1.800.MEDLINE (633.5463)**  
or visit us at [www.medline.com](http://www.medline.com)





## PerformMAX™ Unisex Reversible Scrub Pant

### ▲ Style 800

Unisex and reversible scrub pant with braided drawstring front-tie belt. PerformMAX material offers moisture management like athletic gear. The non-pilling, non-linting fabric will not fade, shrink, or transfer color.



## PerformMAX™ Elastic Waist Scrub Pant

### ▲ Style 850

These high performance unisex scrub pants are made from low-linting 100% synthetic material. Pants feature a generous back pocket, drawstring waist with woven poly color coded drawstring and double needle seams for added durability. Full elastic waist, and a four-panel construction.

**Color Coding:** CM Medline,  
CA Angelica



## PerformMAX™ Modern Fit Boot Cut Pant

### ▲ Style 865

This modern fit, mid-rise cargo scrub pant features a boot cut leg. Waist is a comfy combination of drawstring and elastic. Pants include two side seam pockets and two lower cargo pockets. This is a slim fitting scrub pant, so most people tend to go up one size for comfort and fit.

Every product in the PerformMAX line  
has earned the greensmart™ designation  
**greensmart: Ecofriendly. Economical.**  
More information is at [www.medline.com/greensmart](http://www.medline.com/greensmart).

**greensmart™**

#### SUSTAINABILITY FACTS

Raw Materials ☐

Manufacturing ☐

Packaging ☒

Plastic-free packaging.

Transportation ☐

Product Use ☒

Energy-efficient laundering  
process; dries in 40% less time.

End of Life / Disposal ☐

# ComfortEase™

**A smart investment that's extra durable and looks great out of the laundry**

ComfortEase™ scrubs might just work as hard as you do. The 65/35 poly/cotton blend holds deep, rich colors and stands up to industrial laundering. Lots of styles and sizes to fit your workplace, your lifestyle and your pocketbook.

To order, please call  
**1.800.MEDLINE (633.5463)**  
 or visit us at [www.medline.com](http://www.medline.com)

## Color & Size Selector

For items on pages 8-9

### How to put together an item number

▲ Style Number + ■ Color + ◆ Size

910 JCB XXL - CM

▲ Style ■ Color ◆ Size Color-Coding

#### Available in generously cut sizes

XS	Extra Small
S	Small
M	Medium
L	Large
XL	Extra Large
XXL	2X-Large
XXXL	3X-Large
4XL	4X-Large
5XL	5X-Large

Not all sizes available in all colors.

#### Color Coding

-CM Medline

For our complete selection of Scrub colors and styles please see pages 22-27

#### Color Selection

DKW	Black
XTQ	White
JNT	Midnight Blue
JMB	Mariner Blue
JRL	Royal
JTH	Ciel Blue
JPP	Rich Purple
JEP	Eggplant
JPk	Carnation
JWN	Wine
JRB	Ruby
JCB	Caribbean
JEG	Evergreen
JTJ	Jade
JSS	Seaspray
JBR	Brown
JKK	Khaki

## ComfortEase™ Unisex Reversible Scrub Top

### ▲ Style 910

This unisex v-neck scrub top features a color-coded neck bias and a chest pocket. Set-in sleeves and a generous cut means more room across the back. A left breast pocket, set in sleeves and the generous cut top has more room across the back. Made of durable, heavyweight 65% polyester/35% cotton ComfortEase™ fabric with soil-release.

**Not available in Carnation or Ruby.**

**Color Coding: CM Medline**



## ComfortEase™ Unisex Crew Neck Warm-Up Jacket

### ▲ Style 8832

This warm-up jacket comes in classic styling with self-colored snaps, knit cuffs, and two convenient lower pockets. Made of 65% polyester/35% cotton with soil release finish.

**Not available in Jade.**







## ComfortEase™ Unisex Reversible Scrub Pants with Drawstring

### ▲ Style 900

Braided drawstring makes it easy to tie and untie. Scrub pant also features a useful back pocket and deluxe four-panel construction with sewn in gussets on sizes L and up for greater comfort. ComfortEase™ scrubs are made of durable 65% polyester/35% cotton blend for great color retention and limited shrinking. Stain-resistant finish keeps your scrub pants looking great.

*Regular 31½" Inseam*

**Not available in Carnation and Ruby.**

**Color Coding: CM Medline**



## ComfortEase™ Unisex Non-Reversible Cargo Pants with Drawstring

### ▲ Style 950

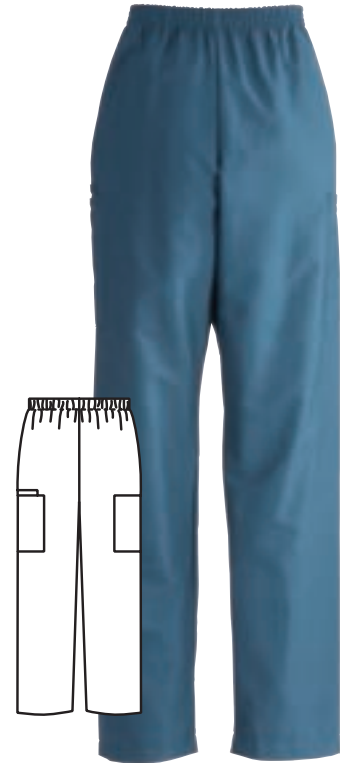
These classic fit scrub pants have a soil-release finish that stays clean longer. Generous back pocket and drawstring waist. Two extra cargo pockets on sides for added storage. Pant features deluxe four-panel construction with sewn in gussets on sizes L and up.

**Not available in Mariner Blue, Eggplant, Carnation, Ruby, Jade and Seaspray.**

**Color Coding: CM Medline**

*Regular 31½" Inseam*

*Tall 35" Inseam not available in Rich Purple*



## ComfortEase™ Unisex Cargo Pants

### ▲ Style 9351

These unisex cargo scrub pants feature a cargo design with two pockets and an elastic waist. Pants feature a deep double pocket on right side and a single pocket on the left.

**Not available in White, Mariner Blue, Ciel Blue, Rich Purple, Eggplant, Carnation, Ruby, Jade, Seaspray, Brown and Khaki.**

*Regular 31½" Inseam*

*Tall 33" Inseam not available in Royal*

# ComfortEase™

## Color & Size Selector

For items on pages 10-11

### How to put together an item number

▲ Style Number + ■ Color + ◆ Size

9 1 0 J C B X X L - C M

▲ Style ■ Color ◆ Size Color-Coding

### ◆ Available in generously cut sizes

XS	Extra Small
S	Small
M	Medium
L	Large
XL	Extra Large
XXL	2X-Large
XXXL	3X-Large
4XL	4X-Large
5XL	5X-Large

Not all sizes available in all colors.

### Color Coding

-CM Medline

For our complete selection of Scrub colors and styles please see pages 22-27

### ■ Color Selection

DKW	Black
XTQ	White
JNT	Midnight Blue
JMB	Mariner Blue
JRL	Royal
JTH	Ciel Blue
JPP	Rich Purple
JEP	Eggplant
JLV	Lavender
JPk	Carnation
JWN	Wine
JRB	Ruby
JCB	Caribbean
JEG	Evergreen
JSS	Seaspray
JBR	Brown
JKK	Khaki



## ComfortEase™ Ladies Snap-Front Tunic

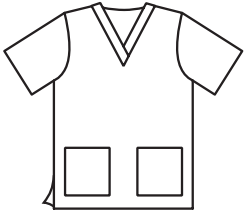
### ▲ Style 8815

Crew neck scrub top has a snap-front closure with two large pockets. Great for people who are looking for an alternative to the traditional top. One pocket includes a scissors holder.

**Not available in Black, Royal, Rich Purple, Eggplant, Lavender, Carnation, Wine, Ruby, Caribbean, Seaspray, Brown and Khaki.**

**Sizes not available: 4XL, 5XL**

## ComfortEase™ Ladies Two Pocket Scrub Top



### ▲ Style 8800

This slightly longer v-neck pullover tunic scrub top has two lower pockets and side vents for easy movement. Most tend to go up one size for comfort and fit.

**Not available in Mariner Blue**

## ComfortEase™ Ladies Two Pocket Crossover Tunic



### ▲ Style 8851

This v-neck crossover scrub top has a modern flare with a crossover neckline and two lower pockets with side vents for easy movement. The slightly longer styling as well as a shallow V allow for complete modesty.

**Not available in Mariner Blue, Eggplant, Lavender, Carnation, Ruby and Seaspray.**

**Sizes not available: 4XL, 5XL**

## ComfortEase™ Ladies Shirttail Style Scrub Jacket

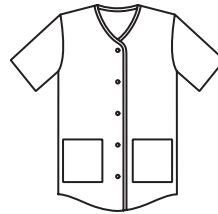


### ▲ Style 8812

Snap-front scrub jacket features knit cuffs and two lower pockets, one with a scissor holder. Neck has a slight V and a gathered back for flattering look.

**Not available in Black, Mariner Blue, Royal, Rich Purple, Eggplant, Carnation, Wine, Ruby, Evergreen, Brown and Khaki.**

## ComfortEase™ Ladies Shirttail Style Scrub Top



### ▲ Style 8834

The casual styling of this top includes snap-front closure, elastic back detail, and two handy lower pockets.

**Not available in Black, White, Eggplant, Carnation, Ruby, Brown and Khaki.**

# ComfortEase™

## Color & Size Selector

For items on pages 12-13

### How to put together an item number

▲ Style Number + ■ Color + ◆ Size

9 1 0 J C B X X L - C M

▲ Style ■ Color ◆ Size Color-Coding

### Available in generously cut sizes

XS	Extra Small
S	Small
M	Medium
L	Large
XL	Extra Large
XXL	2X-Large
XXXL	3X-Large
4XL	4X-Large
5XL	5X-Large

Not all sizes available in all colors.

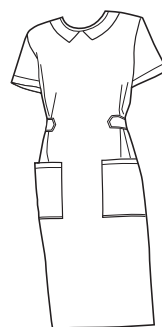
### Color Coding

-CM Medline

For our complete selection of Scrub colors and styles please see pages 22-27

### Color Selection

DKW	Black
XTQ	White
JNT	Midnight Blue
JMB	Mariner Blue
JRL	Royal
JTH	Ciel Blue
JPP	Rich Purple
JEP	Eggplant
JLV	Lavender
JPk	Carnation
JWN	Wine
JRB	Ruby
JCB	Caribbean
JEG	Evergreen
JSS	Seaspray
OLV	Olive
JBR	Brown
JKK	Khaki



## Step-In Scrub Dress

### ▲ Style 844

Our cotton blend step-in scrub dress features an overlap back with snap closure at the neck and at the center of the back to prevent gapping. The scrub dress also features two pockets, one with a scissor holder. This scrub dress is pleated at the front waist and has adjustable ties in back.

**Not available in White, Mariner Blue, Rich Purple, Eggplant, Lavender, Carnation, Ruby, Evergreen and Khaki.**



To order, please call  
**1.800.MEDLINE (633.5463)**  
or visit us at [www.medline.com](http://www.medline.com)



## ComfortEase™ Ladies Elastic Waist Scrub Pant with Two Pockets

### ▲ Style 8850

These high-quality pull-on classic fit scrub pants have a covered, extra-wide elastic waistband that won't roll or bunch up and includes two side seam pockets. 30½" inseam.

**Not available in Jade.**

**Sizes not available: 4XL, 5XL**



## ComfortEase™ Ladies Elastic Waist Petite Scrub Pant

### ▲ Style 8852

These high-quality pull-on petite scrub pants have a covered, extra-wide elastic waistband that won't roll or bunch up and includes two side seam pockets. 29" inseam.

**Not available in Mariner Blue, Royal Blue, Eggplant, Lavender, Carnation, Wine, Ruby, Olive, Evergreen and Brown.**

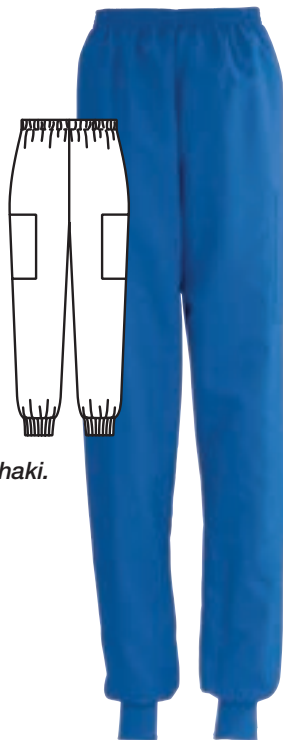


## ComfortEase™ Ladies Knit Cuff Scrub Pant

### ▲ Style 8854

These Medline ComfortEase™ cargo scrub pants feature two convenient cargo pockets, color matched knit cuffs, and a fully elasticized waistband. 30" inseam.

**Not available in Black Lavender, Carnation Ruby, Olive, Brown and Khaki.**



## ComfortEase™ Ladies Modern Fit Cargo Scrub Pant

### ▲ Style 8865

These mid-rise cargo scrub pants feature a boot cut leg and a combination drawstring and elastic waist. Includes two side seam pockets as well as two lower cargo pockets; one pocket with pen/scissors holder. Slim fitting, so most people tend to go up one size for comfort and fit. Check size chart for our recommended sizing. 31" inseam.

**Not available in Mariner Blue, Eggplant, Lavender, Carnation and Ruby.**

**Sizes not available: 4XL, 5XL**



*Petite 28" Inseam not available in JEG, JPP, JTH and XTQ*

*Tall 33" Inseam not available in JPP and XTQ*

# AngelStat®

Soft as a breeze and smooth to the touch . . . no wonder it's so popular

You expect professional excellence from yourself and your workwear, but you deserve comfort too. AngelStat® scrubs' cotton-rich, 55/45 blend gets softer and softer the more it's washed. They're durable, so you'll be washing them a good long time.

## Color & Size Selector

For items on pages 14-15

### How to put together an item number

▲ Style Number + ■ Color + ◆ Size

9 1 0 J C B X X L - C M

▲ Style ■ Color ◆ Size Color-Coding

### Available in generously cut sizes

XS	Extra Small
S	Small
M	Medium
L	Large
XL	Extra Large
XXL	2X-Large
XXXL	3X-Large
4XL	4X-Large
5XL	5X-Large

Not all sizes available in all colors.

### Color Coding

-CM	Medline
-CA	Angelica

### Color Selection

NCC	Charcoal
NTQ	White
NTZ	Misty
NGT	Light Grey
NNT	Navy
NRP	Regal Purple
NHT	Sapphire
NTH	Ciel
NBT	Peacock
NHG	Hunter
NJT	Emerald
NTJ	Jade
NTR	Raspberry

For our complete selection of Scrub colors and styles please see pages 22-27

## AngelStat® Unisex Warm-Up Jacket

### ▲ Style 849

This warm-up jacket has a collarless neckline with snap-front closure and matched rib cuffs. It includes two pockets, one with a scissors holder.

**Not available in Light Grey**

**Sizes not available: XS, 3XL, 4XL, 5XL**



## AngelStat® Unisex Reversible Drawstring X-Long Scrub Pant

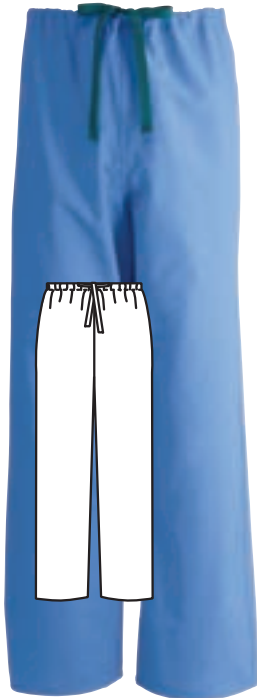
### ▲ Style 601

These generously sized reversible, classic fit scrub pants feature a back left pocket, four-panel construction and double-stitched seams for a better fit and extra strength. Extra-long 34½" inseam.

**Not available in Charcoal, White, Light Grey, Navy, Regal Purple, Sapphire, Peacock, Hunter, Emerald and Raspberry.**

**Sizes not available: XS, 3XL, 4XL, 5XL**

**Color Coding: CM Medline,**





## AngelStat® Unisex Reversible V-Neck Scrub Top

### ▲ Style 610

Reversible unisex V-neck scrub top has a color-coded neck bias. Generous cut allows for extra roominess across the back. Featuring a left breast pocket inside and out, and set-in sleeves.



## AngelStat® Unisex Reversible V-Neck 2-Pocket Scrub Top

### ▲ Style 630

Unisex reversible V-neck scrub top has a left breast pocket and lower pocket with scissors holder. V-neck trim is color-coded for easy size identification. Set-in sleeves.

**Not available in Charcoal, White, Light Grey, Regal Purple, Peacock, Hunter, Emerald and Raspberry.**

**Color Coding:** CM Medline, CA Angelica



## AngelStat® Unisex V-Neck Scrub Top with Knit Trim

### ▲ Style 624

Unisex V-neck scrub top has color-matched knit trim on neck and sleeves, a left breast pocket and a lower right pocket that has a scissors holder. Side vents for ease of movement.

**Not available in Light Grey, Hunter, Sapphire, Regal Purple, White, Jade, Misty and Charcoal.**

**Color Coding:** CM Medline, CA Angelica

## AngelStat® Unisex Reversible Drawstring Scrub Pants

### ▲ Style 600

Reversible unisex drawstring classic fit scrub pants with a back pocket are generously-sized. These cotton-blend scrubs have better shape and durability through the four-panel construction and double-stitched seams. 31" inseam.

**Color Coding:** CM Medline, CA Angelica



## AngelStat® Unisex Cargo Pants with Elastic Waist

### ▲ Style 674

These unisex cargo scrub pants feature two pockets and an elastic waist. Pants have a deep double pocket on right side and a single pocket on the left. 31" inseam.

**Not available in Charcoal, Light Grey, White and Regal Purple.**

*Long sizes please add an L to the end of the item number (33" inseam). Extra long sizes please add an XL to the end of the item number (36" inseam). For regular length add an M.*



## AngelStat® Ladies Knit Collar Warm-Up Jacket

### ▲ Style 845

This warm-up jacket has a knit collar neckline with snap-front closure and matched rib cuffs. It includes two pockets, one with a scissors holder.

**Not available in Misty, Light Grey, Regal Purple, Hunter, Emerald, Jade and Raspberry.**



## AngelStat® Step-In Scrub Dress

### ▲ Style 844

Our AngelStat® cotton blend step-in scrub dress features an overlap back with snap closure at the neck and center of the back to prevent gapping. The scrub dress features two pockets, one with a scissors holder, and is pleated at the front waist with adjustable ties in the back.

**Not available in White, Misty, Light Grey, Navy, Regal Purple, Sapphire, Hunter and Emerald.**

## Color & Size Selector

For items on pages 16-17

### How to put together an item number

▲ Style Number + ■ Color + ◆ Size

9 1 0 J C B X X L - C M

▲ Style ■ Color ◆ Size Color-Coding

### ◆ Available in generously cut sizes

XS	Extra Small
S	Small
M	Medium
L	Large
XL	Extra Large
XXL	2X-Large
XXXL	3X-Large
4XL	4X-Large
5XL	5X-Large

Not all sizes available in all colors.

### Color Coding

-CM	Medline
-CA	Angelica

### ■ Color Selection

NCC	Charcoal
NTQ	White
NTZ	Misty
NGT	Light Grey
NNT	Navy
NRP	Regal Purple
NHT	Sapphire
NTH	Ciel
NBT	Peacock
NHG	Hunter
NJT	Emerald
NTJ	Jade
NTR	Raspberry

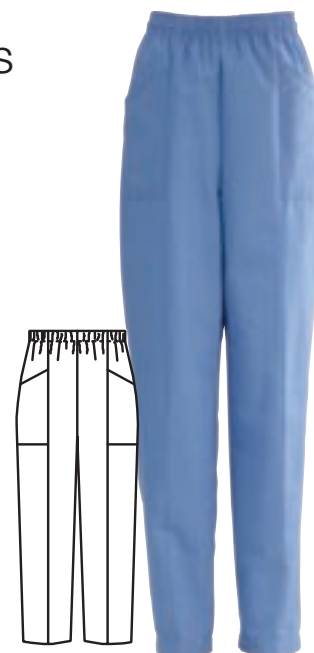
For our complete selection of Scrub colors and styles please see pages 22-27

## AngelStat® Ladies Elastic Waist Slant-Top Pocket Scrub Pants

### ▲ Style 894

These classic fit scrub pants have a vertical front seam, two set-in slant-top pockets with a 30" inseam. Features full elastic waistband with draw cord for additional adjustment. Made of cool, comfortable cotton blended fabric.

**Not available in Misty, Light Grey, Hunter, Emerald and Jade.**





# AngelStat® Ladies



AngelStat® Ladies  
Snap-Front  
Scrub Top

▲ **Style 851**

Jewel neck cut, snap-front closure, and two large pockets; one with a scissors holder which adds to this traditional scrub top. AngelStat® cotton blended fabric.

**Not available in Charcoal, Light Grey and Regal Purple.**



AngelStat® Ladies  
Keyhole Neckline  
Scrub Top

▲ **Style 869**

Keyhole neckline top has side vents and two pockets, one with a scissors holder.

**Not available in Charcoal, Light Grey, Hunter and Regal Purple.**



AngelStat® Ladies  
Two-Pocket  
Scrub Top

▲ **Style 893**

Classically styled V-neck pullover tunic scrub top with lower pockets; one with a scissors holder.

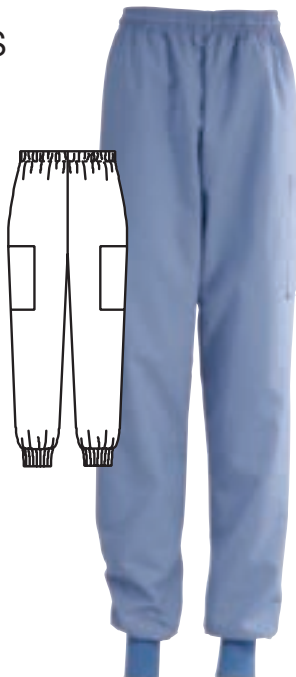
**Not available in Misty, Light Grey and Jade.**

AngelStat® Ladies  
Cuff Cargo Pants

▲ **Style 896**

Classic fit cargo scrub pants feature two convenient cargo pockets, color matched knit cuffs, and a fully elasticized waistband with a draw cord for more adjustment. 30" inseam.

**Not available in Ceil, Charcoal, Misty, Light Grey, Regal Purple and Jade.**



AngelStat® Ladies  
Elastic with Draw  
Cord Scrub Pants

▲ **Style 854**

Medline classic fit scrub pants have a covered, extra wide elastic waistband that won't roll or bunch up and features an inner drawstring cord for extra support. 30" inseam.

**Not available in Charcoal, Light Grey and Regal Purple.**



# ComfortEase™ Scrub Prints

Coordinates with ComfortEase™ solids (65% polyester/35% cotton)



8836



8838



8800



8800



8812

## Indigo Collage C624

Coordinate with solids below.



Available in 4XL and 5XL

## Rhapsody Blues JRP

Coordinate with solids below.



## Angel Face JAF

Coordinate with solids below.



8841



8834



8809

## Baby Foot Print BFP

Coordinate with solids below.



Available in 4XL and 5XL



8800



8809

## Impressions JAM

Coordinate with solids below.



8803

## Bird Collage JBC

Coordinate with solids below.



8813



8800

## Stick People JSP

Coordinate with solids below.



# AngelStat Scrub Prints

Mix and match with AngelStat® solids (45% polyester/55% cotton)

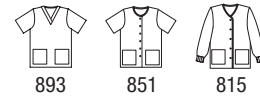


Each item number consists of three parts: style number, print code and size. When ordering please be sure to supply the complete item number. Example: to order Angel Face, V-neck, 2-pocket tunic in XX-Large the item number would be 8800JAFXL.



## Skyline NSL

Coordinate with solids below.



## Tile Blossom NBL

Coordinate with solids below.

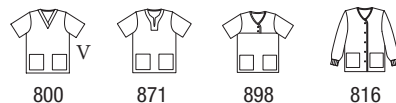
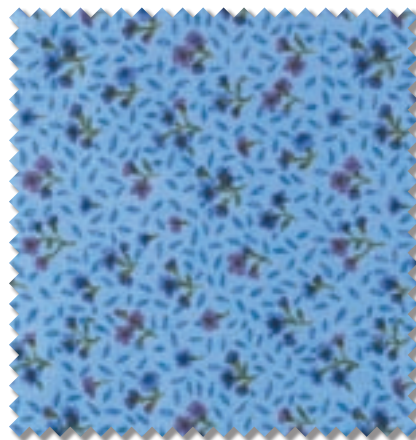


## Provencal NPV

Coordinate with solids below.

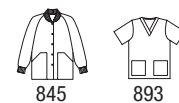


Available in 4XL and 5XL



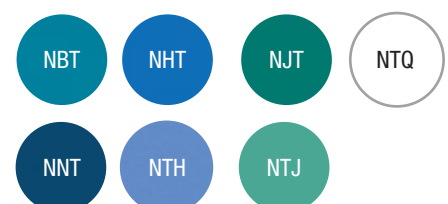
## Forest Flowers NFW

Coordinate with solids below.



## Blue Floral NBF

Coordinate with solids below.





# Encore

**Budget-conscious and built to last, for one nurse or a whole hospital  
(45% polyester/55% cotton)**

Come out and take another bow, Encore scrubs, because you perform great and give the people what they want. And what they want is quality, comfort and a price that's not going to be too hard on the budget. Wearing Encore, you're in the company of healthcare stars.

## Color & Size Selector

For items on pages 20-21

### How to put together an item number

▲ Style Number + ■ Color + ◆ Size

9 1 0 | J C B | X X L | - C M |

▲ Style   ■ Color   ◆ Size   Color-Coding

#### ◆ Available in generously cut sizes

XS	Extra Small
S	Small
M	Medium
L	Large
XL	Extra Large
XXL	2X-Large
XXXL	3X-Large

Not all sizes available in all colors.

#### ■ Color Selection

PTZ	Misty
PNV	Navy
PRY	Deep Royal
PTH	Ciel
PTJ	Jade

#### Color Coding

-CM	Medline
-CA	Angelica

For our complete selection of Scrub colors and styles please see pages 22-27

## Encore Unisex Reversible Drawstring Scrub Pants

### ▲ Style 700

Generously cut, light-weight, with a back pocket and drawstring waist, this durable pant features a two-panel construction. 55/45 blended fabric. 31" inseam.

**Color Coding:** CM Medline, CA Angelica, CF Fashion Seal







## Encore Unisex Reversible Scrub Top

### ▲ Style 710

This unisex scrub top has hospital-proven durability and value with a breathable feel. Top features color-coded neck bias for easy size identification. Lightweight, generous cut top has more room across the back. Features a left breast pocket and set-in sleeves. Made of a durable 55/45 blended fabric.

**Color Coding:** CM Medline, CA Angelica, CF Fashion Seal



## Encore Unisex Reversible Scrub Top

### ▲ Style 720

Top features a color-coded neck bias for easy size identification. Features a left breast pocket and cap sleeves. Made of a durable 55/45 blended fabric.

**Not available in Navy**

**Color Coding:** CM Medline



## Encore Unisex 4-Pocket Reversible Scrub Top

### ▲ Style 730

Just like our popular 710 unisex scrub top, the 730 features a left breast pocket, with the addition of a bottom right pocket, and raglan set-in sleeves. Made of a durable 55/45 blended fabric.

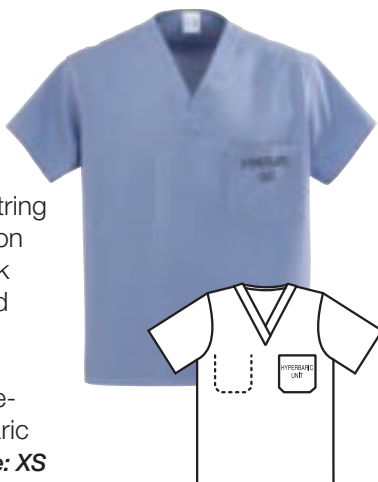
**Not available in Deep Royal and Navy**

**Color Coding:** CM Medline, CF Fashion Seal

## Unisex Reversible 100% Cotton, Hyperbaric Scrub Top

### ▲ Style 658

Features a left breast pocket, inside and out, and set-in sleeves. All components including thread, tags and drawstring are made of 100% cotton with soil-release. V-neck collar has a color-coded neck bias. Scrubs are marked with a black hyperbaric logo and pre-stamped with "hyperbaric unit." **Sizes not available: XS**



## Hyperbaric Scrubs

## Unisex Reversible 100% Cotton, Hyperbaric Scrub Pants

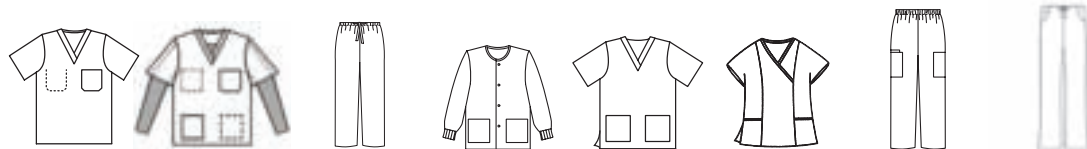
### ▲ Style 659

Generously sized, these reversible pants are made from 100% cotton, including the drawstring, tags and thread. These pants are made of a four-panel construction with back pockets, both inside and out. 30" inseam. Scrubs are marked with a black hyperbaric logo and pre-stamped with "hyperbaric unit." **Sizes not available: XS**



**Tops and pants not available in Navy, Deep Royal and Jade. Color Coding:** CM Medline

# PerforMAX™



Code	Color	810 <sup>u</sup>	819 <sup>u</sup>	800 <sup>u</sup>	829 <sup>u</sup>	839	881	850 <sup>u</sup>	865
JCB	Caribbean Blue	CA		CA					
JWN	Wine	CA		CA					
NTJ	Jade	CA		CA					
JEG	Evergreen	CA		CA					
NNT	Navy	CA, CM	CA, CM	CA, CM					
NTH	Ciel Blue	CA, CM	CA, CM	CA, CM					
JRL	Royal	CA		CA					
NTZ	Misty	CA, CM	CA, CM	CA, CM					

**NOTE:** 819 features grey, long inner sleeves of ultra-stretch synthetic knit, similar to the best athletic under gear.

# ComfortEase™



Code	Color	910 <sup>u†</sup>	8832 <sup>u</sup>	8800	8851 <sup>o</sup>	8815	8834	8812
DKW	Black	CM						
JCB	Caribbean Blue	CM						
JEG	Evergreen	CM						
JEP	Eggplant	CM						
JKK	Khaki	CM						
JPk	Carnation							
JLV	Lavender							
JWN	Wine	CM						
JNT	Midnight Blue							
JPP	Rich Purple	CM						
JRB	Ruby							
JRL	Royal	CM						
JSS	Seaspray	CM						
JTH	Ciel Blue	CM						
XTQ	White	CM (White)	White	White	White	White	RQW White	White
JMB	Mariner Blue	CM						
JTJ	Jade	CM						
JBR	Brown	CM						
OLV	Olive	CM						

## How to put together an item number

▲ Style Number + ■ Color + ◆ Size

8 4 0 5 | G R Y | X X L

▲ Style    ■ Color    ◆ Size

Most styles shown are available in sizes XS-XXXL. Sizes 4XL and larger available at an additional cost.

▢ This style/size combination is available in 4XL and 5XL

**CM** Medline color coding; only applies when noted

† Please add inseam size (M, L) to end of item number when ordering sizes XS (Med. 31" inseam), S-3XL (Med. 31" or Long 33")

★ Petite length pants (29" inseam)

▼ Also available in petite (add P) and tall (add T)

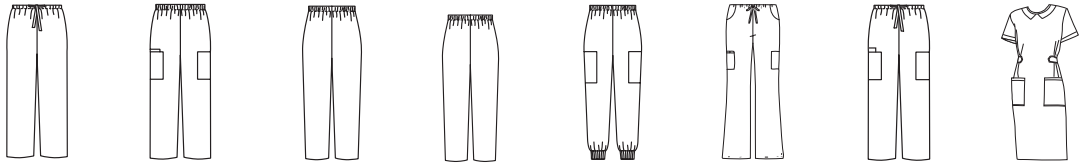
+ Also available in long length (35" inseam), add L before the -CM (S - XXXL sizes only)

⊛ Available in XXS in select colors

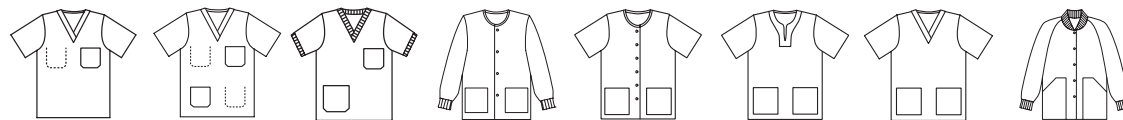
**U** Unisex fit

**x** Long length pants (34½" inseam)

## ComfortEase™

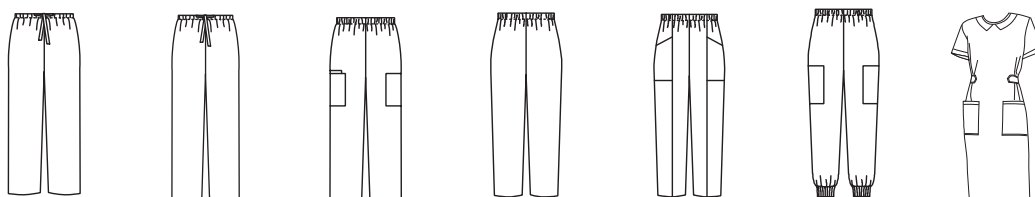


Code	Color	900 <sup>U</sup>	9351 <sup>U†</sup>	8850	8852 <sup>★</sup>	8854	8865 <sup>▼</sup>	950 <sup>U†</sup>	844
DKW	Black	CM						CM	
JCB	Caribbean Blue	CM						CM	
JEG	Evergreen	CM						CM	
JEP	Eggplant	CM							
JKK	Khaki	CM						CM	
JPk	Carnation								
JLV	Lavender								
JWN	Wine	CM						CM	
JNT	Midnight Blue	CM						CM	
JPP	Rich Purple							CM	
JRB	Ruby								
JRL	Royal	CM						CM	
JSS	Seaspray	CM						CM	
JTH	Ciel Blue	CM						CM	
XTQ	White	CM White		White	White			CM White	
JMB	Mariner Blue	CM							
JTJ	Jade	CM							
JBR	Brown	CM						CM	
OLV	Olive	CM						CM	



Code	Color	610 <sup>u</sup>	630 <sup>u</sup>	624 <sup>u</sup>	849 <sup>u</sup>	851	869	893	845
NCC	Charcoal	CM							
NTQ	White	CA, CM			White	White	White	White	White
NTZ	Misty	CA, CM	CA, CM						
NGT	Light Grey	CA, CM							
NNT	Navy	CA, CM	CA						
NRP	Regal Purple	CA							
NHT	Sapphire	CA, CM	CA, CM						
NTH	Ciel Blue	CA, CM	CA, CM						
NBT	Peacock	CA, CM	CM						
NHG	Hunter Green	CA							
NJT	Emerald	CA							
NTJ	Jade	CA, CM	CA						
NTR	Raspberry	CA, CM							

NOTE: Style numbers for the 600 and 610 Navy are M600NNT and M610NNT.



Code	Color	600 <sup>u</sup>	601 <sup>xu</sup>	674 <sup>tu</sup>	854	894	896	844
NCC	Charcoal	CM						
NTQ	White	CA, CM		White	White	White XTQ	White XTQ	
NTZ	Misty	CA, CM	CM					
NGT	Light Grey	CA, CM						
NNT	Navy	CA, CM						
NRP	Regal Purple	CA						
NHT	Sapphire	CA, CM						
NTH	Ciel Blue	CA, CM	CM					
NBT	Peacock	CA, CM						
NHG	Hunter Green	CA						
NJT	Emerald	CA						
NTJ	Jade	CA, CM	CM					
NTR	Raspberry	CA, CM						

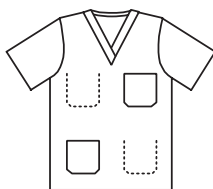


# Encore Scrubs

All styles shown are available in sizes XS-XXXL.

Encore Series scrubs are sold in case quantities only:

- S-XL: 24 ea/cs
- XS, XXL, XXXL: 12 ea/cs

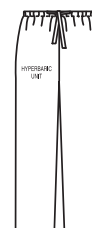


Code	Color	730 <sup>U</sup>	720 <sup>U</sup>	710 <sup>U</sup>	700 <sup>U</sup>
PTH	Ciel Blue	CM, CF	CM	CM, CF, CA	CM, CF, CA
PTJ	Jade	CM, CF	CM	CM, CF	CM, CF
PTZ	Misty	CM, CF	CM	CM, CF	CM, CF
PRY	Deep Royal		CM	CM	CM
PNV	Navy			CF	CF

## All Cotton and Hyperbaric Scrubs

❖ 648 and 649 series scrubs are **NOT** intended for use in hyperbaric units. They contain polyester drawstring, thread and labels.

\* 658 and 659 series scrubs **ARE** intended for hyperbaric use and are pre-stamped with "HYPERBARIC UNIT." All components (thread, drawstrings and labels) are 100% cotton.



Code	Color	648 <sup>U</sup>	649 <sup>U</sup>	658 <sup>U</sup>	659 <sup>U</sup>
MHS	Ciel Blue	❖	❖	CM *	CM *
MJS	Jade	❖			
MZS	Misty	❖	❖	CM *	CM *

# Sizing/ How to Order

## How to put together an item number. Example:

▲ Style Number + ■ Color + ◆ Size + Color Coding (select styles only)  
600 Wine (NBT) Large (L) Medline (-CM) = 600NBT-L-CM

## Sizing Fashion Scrubs

	XS	S	M	L	XL	2XL	3XL	4XL	5XL
LADIES	0-2	4-6	8-10	12-14	16-18	20-16W 1X	18W-20W 2X	22W-24W 3X	26W-28W
MENS	28-30	32-34	34-36	36-38	38-40	42-44	46-48	50-52	54-56

## Sizing Reversible & Surgical Scrubs

NOTE - PerformMAX scrubs stay true to size after washing so they may fit larger than our other scrubs.

	XS	S	M	L	XL	2XL	3XL	4XL	5XL
LADIES	2-4	6-8	10-12	14-16	18-20	16W-18W 1X	20W-22W 2X	24W-26W 3X	28W-32W
MENS	28-30	32-34	34-36	36-38	38-40	42-44	46-48	50-52	54-56

## Custom logos and embroidery

Customized embroidery gives your garments a distinctive look that's all your own. We will embroider your logo or personalize your garments with individual names. Simply follow the steps below and contact us at 1-800-MEDLINE for further guidance.

### STEP ONE: Select a size

Size	Max. Characters Allowed
3/8"	25 characters
1/2"	20 characters
3/4"	15 characters
1"	10 characters

### STEP TWO: Select a message

When counting characters, be sure to include all spaces and punctuation.

### STEP THREE: Choose your font style

Diane Script:	<i>Karen Sullivan</i>
Full Block:	<b>Karen Sullivan</b>
Open Block:	<b>Karen Sullivan</b>
Regular Script:	<i>Karen Sullivan</i>
Brush Script:	<i>Karen Sullivan</i>

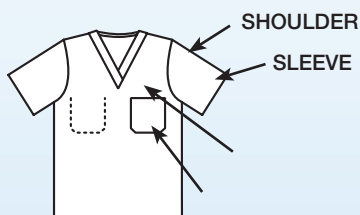
### STEP FOUR: Select placement of embroidery from the following options:

#### On Pants:

- Above back left pocket
- Above back right pocket
- Left front of pant just below waist
- Right front of pant just below waist

#### On Tops:

- Left/right shoulder
- Left/right sleeve
- Left/right pocket (pocket will be nonfunctional)
- Upper left/right chest



### STEP FIVE:

#### Select your thread color:

White

Medium Grey

Black

Gold

Dark Navy

True Red

Burgandy

Lemon Yellow

Kelly Green

Emerald Green

Olive Green

Light Blue

Royal Blue

Navy Blue

# Lab Coat Sizing

## Lab Coats It's your choice...

Medline's comprehensive line of lab coats allows you many options to fit your preferred style, need or healthcare speciality. Check out our very popular staff length lab coats that are easy to care for, or maybe our Zip-Front Smocks with set-in back belts are just what you were looking for. The choice is yours!

### Fabric

Medline's Lab Coats feature four different fabrics of varying weights, construction, and weaves. All of these factors will determine the garments durability and look. Generally, the heavier the fabric, the more durable the garment will be during washing and wearing.

#### Fabric Type

80% polyester/20% cotton

65% polyester/35% cotton

65% polyester/35% cotton

100% cotton

#### Weave

Poplin

Fine line twill weave

Heavyweight twill weave

Heavyweight twill weave

#### Weight

5.0 oz/yd<sup>2</sup>

5.5 oz/yd<sup>2</sup>

7.0 oz/yd<sup>2</sup>

8.5 oz/yd<sup>2</sup>



Consultation Coat



Staff Length



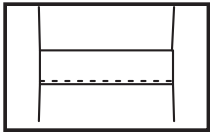
Knee Length



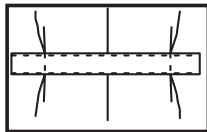
Full Length

### Belt Options

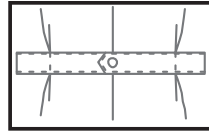
Medline's lab coats are available with a variety of belt options for style and function. Listed below are the variety of belt choices.



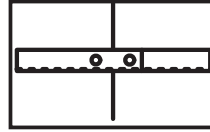
Set-In  
Back Belt



One Piece,  
Loose Back Belt



1-Button  
Adjustable



2-Button  
Adjustable

### Pockets and Closures

Medline's Lab Coats are also offered with a variety of pocket options and front closures. All Medline styles of lab coats come with three outside pockets, one left breast pocket and two lower pockets. You may choose a few styles that offer inside pockets for added storage and convenience.

Medline also offers coats with various closure options to choose from to help meet your clinical or personal style requests. You may choose coats with the standard button closures, zipper front or snap closures.

### Embroidery

All Medline Lab Coats can be embroidered, with the exception of the ladies consultation coat style 88018. We can reproduce your facility logo, personalize garments with your name, or do both. For more information, ask your Medline sales representative or call 1-800-MEDLINE.

Medline Lab Coat Sizing Chart																				
Unisex		XXS			XS		S		M		L		XL		XXL		XXXL		XXXXL	
Ladies		2	4	6	8 (1E)	10	12 (2E)	14	16 (3E)	18	20 (4E)	22	24 (5E)	26	28	30	32	34	36	
Mens	28	30	32		34		36	38	40	42	44	46	48	50	52	54	56	58	60	
Chest (in.)	36.0	37.5	39.0	40.0	41.3	42.5	43.5	45.5	47.5	49.5	51.5	53.5	55.5	58.0	60.0	62.0	64.0	66.0	68.0	72.0

Ladies: use your dress size      Men: use your jacket size. Choose tall if you are 6'4" or taller

Unisex: match your appropriate men's or ladies size

# Lab Wear

Choose from a range of styles and lengths to suit your facility and staff. Poly-cotton blends mean cool comfort and easy laundering.

## A Medline Exclusive

# SilverTouch® Lab Coats

**The next generation in antimicrobial textiles.**

SilverTouch lab coats by Medline are a safe, smart and cost-effective way to protect your lab wear from the growth and multiplication of a broad spectrum of pathogenic microorganisms.

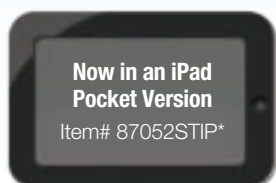


## SilverTouch® Antimicrobial Lab Coat

Unisex staff length lab coat is comfortable and made of a durable 65% polyester/35% cotton blend. White with button-front and a notched lapel collar. Left breast pocket and two lower pockets, sewn-down back belt and side slash openings for easy access to pant pockets and pagers. 39" length.

Item No.	Description
87052ST**	Unisex Lab Coat, White
87052STIP	Unisex Lab Coat, White With Outside Pockets For Your iPad

\*\*Add size code XXS (2X-Small), XS (X-Small), S (Small), M (Medium), L (Large), XL (X-large), XXL (2X-Large), XXXL (3X-Large).



## Men's Premium Full Length Cotton Lab Coat

**Features knot buttons and an adjustable back belt for a better fit**

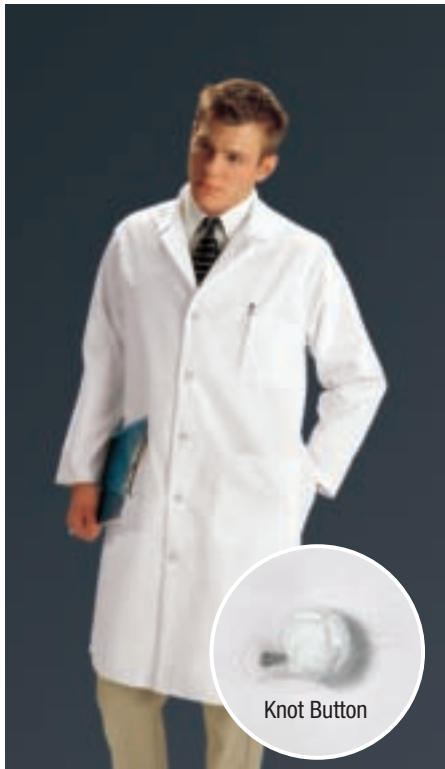
Our premium lab coat is 100% heavy-weight cotton twill for extra durability and is nicely detailed with knot button closures in front and on the back belt. With a pencil divided left breast pocket, two lower pockets and side slash openings for easy access to pants pockets. Back vent. 44" length. Available in sizes 28-56\*\*.

Item No.	Description
317TNS**	White

\*\*Add size code 28, 30...56 for sizes 28-56. Sizes above Men's sizes 48 available at additional charge.

**Disclaimer** SilverClear™ is registered with the EPA as a preservative to protect products from staining and product deterioration caused by mold, mildew or bacteria and to inhibit the growth of odor-causing bacteria on the product itself. This product does not protect users or others against disease-causing bacteria.





## Men's Full Length Lab Coat

### Offers tall sizes

80% polyester/20% cotton poplin. Two lower pockets, one chest pocket with pencil slot; side vent openings for easy access to trouser pockets. 43" length. Available in sizes 36-54\*\*, Tall sizes 38-52\*\*.

Item No.	Description
MDT14WHT**	White

\*\*Add size code: 34E, 38E...54E for regular sizes 34-54.

\*\*Tall, Add size code: 38TE, 40TE...52TE for tall sizes 38-52. Sizes above men's 48 available at additional charge.

## Men's Fine Line Twill Staff Length Lab Coat

In 65% polyester/35% cotton fine line twill, this button-front lab coat features a pleated back with inset belt, left breast pocket, two lower pockets and side slash openings for easy access to pants pockets. 39" length. Available in sizes 36-52\*\*.

Item No.	Description
87052TRQ**	White

\*\*Add size code 36, 38...52 for sizes 36-52.

## Staff Length Lab Coat

### Keeps its good looks even on the longest shifts

In an easy care, 80% polyester/20% cotton poplin fabric that's designed to resist wrinkles. Button-front styling with two lower pockets, one chest pocket (with pencil slot) and side vent openings for easy access to pants pockets. 39" length. Available in sizes 32-60\*\*.

Item No.	Description
MDT12WHT**	White
MDT12WHTST**	SilverTouch® White

\*\*Add size code 32E, 34E, 36E...60E for regular sizes 32-60. Sizes above men's 48 available at additional charge.



### Custom Embroidery Services

Ask us how we can custom embroider your lab coat to create a truly distinctive and unique look. We can reproduce your facility logo, personalize your garments with your name, or do both. For more information, ask your Medline sales representative or call 1-800-MEDLINE.

## Metric Conversion

1 inch = 2.54 centimeters

1 ounce = 28.35 grams or .028 kilograms

1 pound = .454 kilograms

1 ounce per square yard = 33.9057 grams per square meter

# Lab Wear Unisex



## Medline Heavyweight Twill Lab Coat

65% polyester/35% cotton heavyweight twill. White button-front lab coat with two large lower pockets, one chest pocket with pencil slot. Side vent openings for easy access to trouser pockets. 43" length. Available in sizes 30-56\*\*. Tall sizes 40-52\*\*.

Item No.	Description
MDT7755010**	White

\*\*Add size code: 36, 38...56 for sizes 30-56. Sizes above Mens size 48 available at extra charge.



### Custom Embroidery Services

Ask us how we can custom embroider your lab coat to create a truly distinctive and unique look. We can reproduce your facility logo, personalize your garments with your name, or do both. For more information, ask your Medline sales representative or call 1-800-MEDLINE.



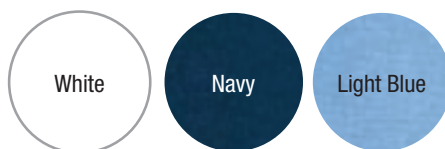
## Medline Unisex Knee Length Lab Coat

**Comes in your choice of three popular colors**

Button-front style features a lapel collar, left breast pocket, two lower pockets, plain back and side slash openings for easy access to pants pockets. 41" length. White style in 80% polyester/20% cotton. Colored styles in 65% polyester/35% cotton poplin. Available in sizes XS-3XL\*\*.

Item No.	Description
83044PQHWM**	White
83044QHW**	White
83044RNN**	Navy, not avail. in XS
83044RCW**	Light Blue

\*\*Add size code XS (X-Small), S (Small), M (Medium), L (Large), XL (X-Large), XXL (2X-Large), XXXL (3X-Large). Sizes above XL available at additional charge.



## Unisex Knit Cuff Staff Length Lab Coat

**Offers your choice of coverage**

This classic, white, button-front style gives you the option of wearing the lapel collar open or snapped closed for extra coverage, plus it has the added benefit of knit cuffs. With a handy pencil-divided pocket, two lower pockets and convenient side slash openings for easy access to pants pockets. 39" length. 80% polyester/20% cotton poplin. Sizes S-3XL\*\*.

Item No.	Description
87050QHW**	White

\*\*Add size code S (Small), M (Medium), L (Large), XL (X-Large), XXL (2X-Large), XXXL (3X-Large).

## Unisex Knit Cuff Knee Length Lab Coat

**Features a five-snap front that can be worn open or closed for added coverage**

80% polyester/20% cotton poplin. White snap front lab coat with knit cuffs. Collar can be worn open or snapped to cover neck. Left breast pocket and two lower pockets. Side slashes for easy access to trouser pockets. 42" length. Available in sizes XS-3XL\*\*.

Item No.	Description
87026QHW**	White

\*\*Add size code XS (X-Small), S (Small), M (Medium), L (Large), XL (X-Large), XXL (2X-Large), XXXL (3X-Large).

Sizes above XL available at additional charge.

**NOTE:** Ladies choose the correct size based on your dress size, Men use your jacket size. If choosing a Unisex coat, find your dress size or jacket size first and then find the corresponding unisex size.

Tall coats are recommended for anyone over 6'4".



# Lab Wear Ladies

## Ladies Classic Staff Length Lab Coat

### Princess-seamed for a more flattering fit

80% polyester/20% cotton poplin. White button-front lab coat with pencil divided left breast pocket, two lower pockets and princess-seamed back with one-piece back belt. Side slashes for access to trouser pockets. 36" length. Available in sizes 2-36\*\*.

Item No.	Description
MDT11BCA**	White, with Pink Ribbon embroidered on lapel
MDT11WHT**	White
MDT11WHTST**	SilverTouch® White

\*\*Add size code 2E, 4E...36E. Sizes above 20 available at additional charge.

## Ladies Full Length Lab Coat

### Princess style with an adjustable back belt

80% polyester/20% cotton poplin. White button front lab coat with two lower pockets, one chest pocket. Tailored fit with princess style seams on back. 2-button adjustable back belt. 40" length. Available in sizes S-3XL\*\*.

Item No.	Description
MDT13WHT**	White

\*\*Add size code: 1E (Small), 2E (Medium) 3E (Large), 4E (X-Large), 5E (2X-Large), 6E (3X-Large). Sizes above XL available at additional charge.



# Consultation Coats

From premium 100% cotton to easy-care 80% polyester / 20% cotton blends, our coats provide a professional appearance.



**NOTE:** Ladies choose the correct size based on your dress size, Men use your jacket size. If choosing a Unisex coat, find your dress size or jacket size first and then find the corresponding unisex size.

Tall coats are recommended for anyone over 6'4".

Medline  
Consultation Coat

Ladies Medline  
Consultation Coat

Unisex Zip Front  
Smock

## Medline Consultation Coat

**Easy care choice that keeps pace with your busy schedule**

Three-button front coat with a lapel collar, left breast pocket and two lower pockets; plain back. 30" length. 80% polyester/20% cotton poplin. Available in sizes 32-58\*\*.

Item No.	Description
MDT10WHT**	White

\*\*Add size code 32E, 34E...58E for sizes 32-58.  
Men's sizes above 48 available at additional charge.

## Ladies Medline Consultation Coat

**All-out ease in a very professional style**

80% polyester/20% cotton poplin. White button-front Consultation Coat with lapel collar. Left breast pocket and two lower pockets. Princess seams front and back. 29" length. Available in sizes 4-30\*\*.

Item No.	Description
88018QHW**	White

\*\*Add size code 4-30.  
Sizes above 20 available at additional charge.

## Unisex Zip Front Smock

**Gives you a tailored, professional look with zip-up ease**

Our short sleeve smock features a back yoke for added shape and a set-in back belt with pleat detailing. A handy left breast pocket and two lower pockets complete the look. 31" length. White style in 80% polyester/20% cotton. Navy and Light Blue styles in 65% polyester/35% cotton. Available in sizes XS-4XL where noted\*\*.

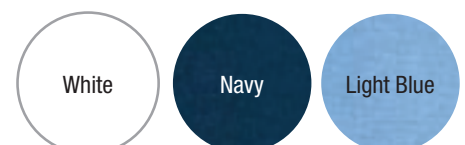
Item No.	Description
87005QHW**	White, avail. XS-3XL
87005DNW**	Navy, avail. S-3XL
87005RCW**	Light Blue, avail. S-4XL

\*\*Add size code XS (X-Small), S (Small), M (Medium), L (Large), XL (X-Large), XXL (2X-Large), XXXL (3X-Large), XXXXL (4X-Large).  
Sizes above XL available at additional charge.

### Custom Embroidery Services



Ask us how we can custom embroider your lab coat to create a truly distinctive and unique look. We can reproduce your facility logo, personalize your garments with your name, or do both. For more information, ask your Medline sales representative or call 1-800-MEDLINE.





# Barrier Unisex



## Unisex ASEP® Barrier Lab Coat

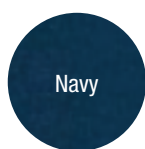


### Protection designed for your ever changing environment

100% polyester ASEP Barrier Fabric. Collar can be worn open or snapped closed to cover neck. Reinforced concealed snap front closure provides greater protection from fluids. Back of garment is made of 50% polyester/50% cotton. Left breast pocket, two lower patch pockets and side slash openings to access pants pockets. 100% polyester knit cuffs.

Item No.	Description
6623BQW**	White
6623BNW**	Navy

\*\*Add size code XS (X-Small)-XXXXL (5X-Large).



To order, please call  
**1.800.MEDLINE (633.5463)**  
or visit us at [www.medline.com](http://www.medline.com)



## Unisex ASEP® A/S Barrier Lab Coats

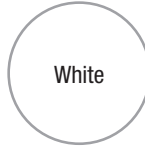


### Antistatic protection never looked so good

ASEP A/S made of 99% polyester/1% carbon fiber moisture barrier fabric with inherent static control properties. Collar can be worn open or up and snapped closed to cover neck. Concealed zip front; two lower patch pockets. Back of garment is made of 50% polyester/50% cotton fabric. 100% polyester knit cuffs.

Item No.	Description
6620BLH**	White
6621BLC**	Ciel Blue

\*\*Add size code XS (X-Small)-XXXXL (4XL-Large).



## Unisex ASEP® Barrier Short Lab Coat

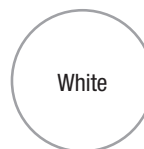


### Protection where you need it most

100% polyester ASEP Barrier Fabric. Overlapping standup collar with snap closure. Concealed zip front closure provides greater protection from fluids. Back of garment is made of 50% polyester/50% cotton. Two lower patch pockets; one with scissors holder. 100% polyester knit cuffs.

Item No.	Description
6602BQW**	White

\*\*Add size code XS (X-Small)-XXXL (3X-Large).



# Ladies Barrier Lab Coats

## Ladies ResiStat® Protective Warm-Up Jackets latexfree

**Offer a lot more than conventional warm-up jackets**

99% polyester/1% carbon fiber fluid resistant, protective warm-up jacket. Six snap overlapping front closure that allows neckline to be closed off for added protection. Stockinette collar and cuffs. Two lower pockets add convenience.

Item No.	Description
MDT046883**	White

\*\*Add size code S (Small)-XXXL (3X-Large).

## Ladies ResiStat® Protective Lab Coats latexfree

**Styled for today's working woman**

99% polyester/1% carbon fiber fluid resistant, protective lab coat. Overlapping five snap front closure and stockinette collar guard. 100% polyester cuffs, two lower pockets and one chest pocket. Side vent openings for easy access to trouser pockets.

Item No.	Description
MDT046815**	White

\*\*Add size code S (Small)-XXL (2X-Large).



All of Medline's Barrier Lab Coats, ResiStat® Lab Coats and Barrier Isolation Gowns feature a quality control grid that allows you to track usage.

## Men's Barrier Lab Coats



## Men's ResiStat® Protective Lab Coats latexfree

PRODUCT

**Offers the protection you need**

99% polyester/1% carbon fiber fluid resistant protective lab coat. Front closure has lapel collar and a 3" overlap with four snaps for added protection against splashes. 100% polyester knit cuffs. Two lower pockets and one chest pocket. Side vent openings for easy access to trouser pockets.

Item No.	Description
MDT046805**	White
MDT046811**	Light Blue, not avail. in XS

\*\*Add size code XS (X-Small)-XXXL (3X-Large).

# Isolation Gowns

## Blockade Fluid-Resistant Isolation Gowns

A high-count, densely woven fabric made with non-linting continuous filament polyester fibers that offer excellent fluid resistance. This fabric is also engineered with carbon fibers to offer protection where static control is required. Following recommended care instructions, Blockade's barrier properties are guaranteed up to 75 processings.

## Unisex Blockade Isolation Gown

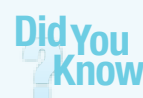
**Dollar for dollar our best value in protective isolation gowns**

- Fluid Repellent
- AAMI Rated Level 1
- 100% polyester fluid-resistant fabric
- Overlap back, twill tie neck and back waist closures
- White polyester knit cuffs



Item No.	Color	Size	Sweep	Length	Pkg
MDT011207	Yellow	OSFM	57"	44"	6 dz/cs
MDT011207Z	Yellow	OSFM	57"	44"	1 dz/cs
MDT011207XXXL	Yellow	3XL	70"	47"	1 dz/cs
MDT011205	Grey	OSFM	57"	44"	6 dz/cs
MDT011205Z	Grey	OSFM	57"	44"	1 dz/cs

*United Hospital Service-In 2005 they convinced 30 hospitals they serviced to keep reusable isolation gowns. They saved a combined \$1.4M annually.<sup>1</sup>*



<sup>1</sup> Title of Newsletter: Why Choose Reusable Isolation Gowns? United Hospital Services in Indianapolis, IN, 2008, GM Ed McCauley.

## Unisex Blockade Barrier Reusable Isolation Gown

**Fluid barrier protection with added antistatic protection**

Blockade Fabric made of 99% polyester/1% carbon fiber moisture barrier fabric with inherent static control properties. Blockade A/S gown offers Blockade back panels. Overlap back, ties at neck and waist; white 100% polyester knit cuffs. Yellow.

Item No.	Description	Pkg
MDT011201L	Large	6 dz/cs
MDT011201XL	X-Large	6 dz/cs
MDT011208	Poly/Cotton Back Panel	1 dz/cs



Grey



All of Medline's Barrier Lab Coats, ResiStat® Lab Coats and Barrier Isolation Gowns feature a quality control grid that allows you to track usage.



## Unisex Blockade Antistatic Barrier Backless Gown

### More than an apron

Blockade is made of 99% polyester/1% carbon fiber moisture barrier fabric with inherent static control properties. Ties at neck and back; 100% polyester knit cuffs.

Item No.	Description	Pkg
6636BLC**	Ciel Blue	1/ea

\*\*Add size code Small-XXXL (3X-Large).

## Medline's Unisex Isolation Gowns

Economical isolation gowns (2.6 oz./sq. yd.) have long sleeves with 2" stockinette cuffs and overlapping back closure with twill tape ties. Sweep is 54", length is 46". Memory Cloth (3.0 oz./sq. yd.) gown has long sleeves with 6" stockinette cuffs and self-fabric belt sewn into side seams. Sweep is 54"; length is 44". Both fabrics are a blend of 55% cotton/45% polyester. One size fits most.

Item No.	Description	Pkg
<b>Isolation Gowns</b>		
MDT011204	Yellow	6 dz/cs
MDT011204Z	Yellow	1 dz/cs
MDT011206	White	6 dz/cs
<b>Memory Cloth</b>		
MDT011202	Yellow	6 dz/cs



## Reusable Isolation Gown Dispenser

- Holds a minimum of 20 reusable isolation gowns
- Hinged lid with opening at bottom of unit
- Keyholes for wall mounting or may be used with our optional door hangers
- Made of quartz ABS plastic
- Box size: 14<sup>15</sup>/<sub>16</sub>"W x 28<sup>1</sup>/<sub>4</sub>"H x 4<sup>3</sup>/<sub>4</sub>"D

Item No.	Color	Pkg
MDTGN002	Quartz	1 ea/cs



## Reusable Isolation Gown Organizer

- Holds a minimum of 20 reusable isolation gowns
- Also holds 2 boxes of gloves and one box of face masks
- Keyholes for wall mounting or may be used with our optional door hangers
- Made of quartz ABS plastic
- Box size: 14<sup>3</sup>/<sub>4</sub>"W x 28<sup>3</sup>/<sub>4</sub>"H x 4<sup>3</sup>/<sub>4</sub>"D

Item No.	Color	Pkg
NONLD067	Quartz	1 ea/cs



# Polos

## How to put together an item number

▲ Style Number + ■ Color + ◆ Size

8 4 0 5 | G R Y | X X L

▲ Style

■ Color

◆ Size

A

B

## (A,B) Interlock Performance Polo

- Easy-care 100% polyester
- 5-oz. fabric
- Moisture-wicking
- Relaxed fit
- UPF 40 sun protection
- Shrink resistant and wrinkle-free
- Self-fabric collar
- Side slits (ladies) and tagless

### ▲ 8405: Men's Cool & Dry Performance Polo

▲ 8405LS: Long Sleeve:  
Available in Black, Grey, White,  
Columbia Blue and Navy

Size	Chest	Size	Chest
S	< 40	3XL	56-60
M	40-44	4XL	60-64
L	44-48	5XL	64-68
XL	48-52	6XL	68-72
2XL	52-56		

### ■ Color Selection

BLK	Black
NVY	Navy
CBL	Columbia
WHT	White
CHL	Charcoal
RYL	Royal Blue
WNE	Wine
STN	Stone
RED	Red
FOR	Forest
GRY	Grey

### ▲ 8407: Ladies Cool & Dry Performance Polo

Size	Chest	Waist
XS	< 32	< 32
S	32-34	32-34
M	34-36	34-37
L	36-39	37-40
XL	39-42	40-43
2XL	42-45	43-46
3XL	45-48	46-49

\*This item runs short in length. Sits above the hip

To order, please call  
**1.800.MEDLINE (633.5463)**  
or visit us at [www.medline.com](http://www.medline.com)





## (C,D) Cool & Dry Sport Polo

- 100% polyester
- Moisture-wicking
- 4.8-oz. fabric
- Relaxed Fit
- Mini-jacquard and tagless
- Hemmed sleeves
- UV sun protection
- Anti-bacterial and anti-static
- Sizes: S-6XL (men's)
- Sizes: S-2XL (ladies)

### Color Selection

BLACK	Black
NAVY	Navy
WHITE	White
ROYAL	Royal Blue
RED	Red
LGRN	Light Green

### ▲ 8445: Men's Cool & Dry Sport Polo

Size	Chest	Size	Chest
S	< 40	3XL	56-60
M	40-44	4XL	60-64
L	44-48	5XL	64-68
XL	48-52	6XL	68-72
2XL	52-56		

### ▲ 8445L: Ladies Cool & Dry Sport Polo

Size	Chest	Waist
S	< 36	< 32
M	36-38	32-34
L	38-41	34-37
XL	41-44	37-40
2XL	44-47	40-43
3XL	47-50	43-46

*This item fits small*

## (E) Tonal Stripe Performance Polo

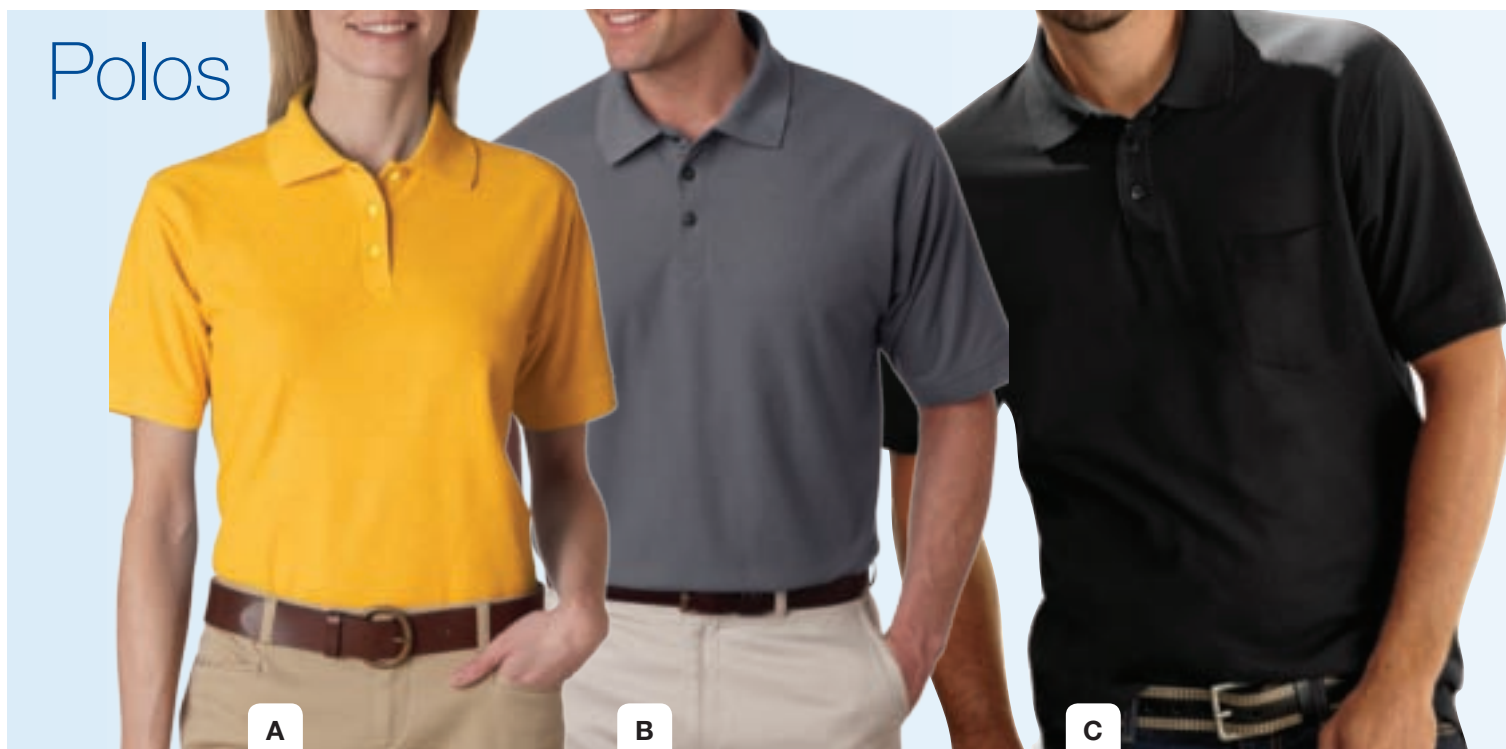
### ▲ 8413: Cool & Dry Men's Polo

- 100% polyester
- 5-oz. Moisture-wicking fabric
- Relaxed Fit
- UPF 30 sun protection
- Shrink and wrinkle-free
  - 3-button placket
  - Double-needle cuffs
- Pearlized buttons
- Side slits and tagless
  - Sizes: S-3XL

### Color Selection

BLK	Black
NAVY	Navy
CBL	Carolina Blue
WHT	White
RED	Red
APL	Apple Green

# Polos



A

B

C

## (A) Ladies Whisper Pique Polo

**Item number:** ▲ 931

- Soft easy-care pique
- 60% cotton / 40% polyester;  
Grey 90% cotton / 10% polyester
- Wrinkle-resistant
- Sizes S-XXL
- Available with contrast collar (Item 935)

## (C) Whisper Pique Polo with Pocket

**Item number:** ▲ 932

- 60% cotton / 40% polyester
- 5.6 oz
- Relaxed fit
- Split tail
- Sizes S-6XL
- Not available in all colors

## (B) Men's Whisper Pique Polo

**Item number:** ▲ 930

- Classic fit
- 60% cotton / 40% polyester  
Grey 90% cotton / 10% polyester
- Sizes S-4XL
- Available with contrast collar (Item# 934)
- Available with long sleeve (Item# 933)

### ■ Color Selection

WHT	White
GRY	Heather Grey
GRA	Graphite
BLK	Black
STN	Stone
TAN	Putty
YLW	Yellow
GLD	Gold
LBL	Light Blue
CFL	Cornflower
RYL	Royal Blue
NAVY	Navy
PNK	Pink
RED	Red
WNE	Wine
APL	Apple Green
LEA	Leaf Green
FOR	Forest Green

# T-Shirts



## (C,D) T-Shirts

**(C) ▲ 925: Short Sleeve T-Shirt**

**(D) ▲ 926: Long Sleeve T-Shirt**

- 100% cotton jersey
- Preshrunk
- Double-needle sleeve
- Bottom hems
- Sizes S-XXL (select colors up to 5XL)
  - (No Leaf or Tan in long sleeve)

To order, please call  
**1.800.MEDLINE (633.5463)**  
 or visit us at [www.medline.com](http://www.medline.com)

### ■ Color Selection

BLK	Black
CBL	Carolina Blue
WHI	White
CHR	Charcoal
RYL	Royal
MAR	Maroon
TAN	Tan
GRY	Heather Grey
EGG	Eggplant
PUR	Purple
LEA	Leaf
DCH	Dark Brown

### How to put together an item number

▲ Style Number + ■ Color + ◆ Size

8 4 0 5 | G R Y | X X L  
 ▲ Style    ■ Color    ◆ Size

# Industrial Shirts

## Industrial Solid Work Shirts

### ▲ SP24: Short Sleeve

### ▲ SP14: Long Sleeve

- 65% polyester / 35% cotton, 4.25 oz Poplin
- Touchtex™ technology with superior color retention, soil release and wickability
- Two-piece, lined collar with sewn in stays and six-button front with gripper at neck
- Two button-thru hex-style pockets with bartacked pencil stall on left pocket
- Sizes S - 5XL (size 5XL not available in all colors)

### ■ Color Selection

BK	Black	BY	Burgundy	KK	Khaki	CB	Chocolate
LA	Light Grey	LB	Light Blue	SV	Silver	WH	White
CH	Charcoal	DB	Dark Blue	LG	Light Green	MB	Petrol Blue
NV	Navy	GY	Grey	LT	Light Tan	RD	Red
OR	Orange	RB	Royal	PB	Postman Blue	SG	Spruce
YE	Yellow						



## Industrial Patterned Work Shirts

### ▲ SP10: Short Sleeve

### ▲ SP20: Long Sleeve

- 65% polyester / 35% cotton, 4.25 oz. Poplin
- Pre-cure durable press with soil release & wickable finish
- Industrial wash with six buttons and vertical buttonholes, button at neck
- Two-piece, lined, sewn-in stays collar
- Two button-thru hex style pockets with angled bartacks, bartacked pencil stall in left pocket
- Stitched-down front facing
- Sizes S - 5XL (size 5XL not available in all styles)

### ■ Color Selection

BW	White/Blue	CW	White/Charcoal	KB	Khaki/Black
WT	White/Brown	GW	White/Green	HK	Hunter/Khaki
				EX	Blue/Charcoal





# Twill Work Shirts



## (A,C) Men's Performance Twill Work Shirt

### ▲ 1T22: Short Sleeve

### ▲ 1T12: Long Sleeve

- Dual-action stain repel / soil release
- Button-down collar
- Roomy left chest pocket with reinforced pencil stall
- Felled side seams and underarm seams
  - Back yoke and side pleats
  - 5 oz. twill
  - 65% polyester / 35% cotton fine-line twill
- Sizes: S-6XL (select colors not available in larger sizes)

### ■ Color Selection

BK	Black	BU	Burgundy	SD	Sundance
WH	White	LB	Light Blue	EM	Emerald
KH	Khaki	RB	Royal	RD	Red
PU	Purple	ST	Stone	SP	Spice
NV	Navy				

### How to put together an item number

▲ Style Number + ■ Color + ◆ Size

8 4 0 5 | G R Y | X X L

▲ Style    ■ Color    ◆ Size

## (B) Ladies Performance Twill Work Shirt

### ▲ 1T21: Short Sleeve

### ▲ 1T11: Long Sleeve

- Double-needle top-stitched seams for reinforcement and style
- Button-down collar for polished look
- Felled side seams and underarm seams for durability
- Front and back darts for better ladies specific fit
- Shaped sideseams for more feminine style and fit
  - 5 oz. twill
  - 65% polyester / 35% cotton fine-line twill
- Sizes:XS-3XL



# Industrial Pants.

## Men's Industrial Cargo Pant

### Solid Cargo Pant: PT88

- 65% polyester / 35% cotton, 8oz twill
- Touchtex™ technology with exceptional color retention, soil release and wickability
- Slack-style front pockets and two set-in hip pockets, left pocket has button closure
- Two bellow cargo pockets with pocket flap and snap closures
- Inseam lengths 30, 32, 34, 36 and 37 unhemmed (all khaki and charcoal sizes are unhemmed 36")
- Sizes 30-50

*Size availability varies by color. If hemmed length is needed, contact your Medline sales representative*

#### Color Selection

BK	Black	NV	Navy
KH	Khaki	CH	Charcoal

## Men's Industrial Work Pant

### Solid Pant: PT20

- 65% polyester / 35% cotton, 7.5oz twill
- Post-cure durable press soft hand twill
- Two slack style front pockets, two set-in hip pockets, left has button closure
- Navy inseam lengths 27-34, unhemmed available  
Black inseam lengths 30, 32, 34, 36 and 37 unhemmed
- Sizes 28-54

*Size availability varies by color. All khaki and charcoal sizes are unhemmed.*

#### Color Selection

BK	Black	NV	Navy
KH	Khaki	CH	Charcoal

*Women's Industrial Work Pant available-PT21*

*Add color selection then "size" x "inseam" to end of item number (example: PT88BK34X32)*



# Jackets & Fleeces



Top Seller

## Men's Two-Tone Jacket

**Item number: JM32**

- Shell: 100% polyester microfiber
- Lining: 100% nylon
- Stand up collar
- Contrast color detailing
- Elastic cuffs
- Front pockets have zipper closure
- Drawstring bottom
- Two interior zippers
- Athletic fit
- Sizes S - 4XL

### Color Selection

BC	Black	NK	Navy
CH	Charcoal	KH	Khaki

## Fleece-Lined Hooded Jacket

**Item number: 937**

- 100% nylon shell
- Zipper front
- Sweatshirt lining
- Hood and waist drawstrings
- Sizes S-4XL

### Color Selection

BLK	Black
NVY	Navy
RYL	Royal
FOR	Forest Green
WNE	Burgundy
RED	Red

## Fleece Jackets

**Men's Fleece Jacket: 938**

**Ladies Fleece Jacket: 939**

- 100% polyester fleece
- Elastic cuffs
- Zipper front
- Zipper pockets
- Anti-pill
- 938 Sizes S-4XL
- 939 Sizes S-XXL

### Color Selection

BLK	Black
NVY	Navy
CHR	Charcoal

Add color selection and color code to end of item number .

# Pincord Uniforms

## Pincord Shirt Jacket

### ▲ Item number: 1S00

- A hard-working, durable basic that looks good all day
- Deep back inverted reinforced pleat for ease of movement
- Half-belted back gives added style
- Reversed zipper fly front with snap neck
- Deep front patch pockets
- 4.5 oz
- 75% polyester/ 25% cotton Pincord
- Light soil wash
- Men's sizes: S-5XL

#### ■ Color Selection

BK	Black
NV	Navy
HU	Hunter Green
TN	Tan



## Lapel Dress

### ▲ Item number: 9S01

- Relaxed shoulders for casual comfort and perfectly balanced fit
- Additional fabric built into underarm seam for range of motion
- Modest top button placement and adjustable back ties
- Easy side entry pockets
- Stain repel/soil release white trim
- 4.5 oz
- 75% polyester/ 25% cotton Pincord
- Light soil wash
- Ladies sizes: XS-3XL

## Lapel Tops

### ▲ 9S05: Single-Breasted Lapel

### ▲ 9S03: Double-Breast Lapel

- Modest button front closure
- Contrasting sleeve opening tabs
- Two roomy front patch pockets bar-tacked for extra strength
- Basic pincord tunic with contrasting white trim
- 4.5 oz
- 75% polyester/ 25% cotton Pincord
- Light soil wash
- Ladies sizes: XS-5XL
- 9S05 (no tan)



10	White
63	Marina
71	Lake Blue
73	Nautical Navy
43	Cabernet

## Easy Pull-On Slacks

### ▲ Item number: 2S11

- Roomy sideseam pockets reinforced for long wear
- 32½" finished inseam can be easily altered
- Easy style teams up with a wide 1½" full elastic waistband for a comfortable, relaxed fit
- 4.5 oz
- 75% polyester/ 25% cotton Pincord
- Ladies sizes: XS-5XL
- Light soil wash

Add color selection and color code to end of item number .

## (A) A-line Tunic

▲ **Item number: MDT76015**

- A-line styling
- Princess seams
- Button-front
- Two lower patch pockets
- 65% polyester / 35% cotton
- Available in sizes: 1 (small) - 8 (5XL)

## (B) Elastic Waist Pants

▲ **Item number: MDT75133**

- Full elastic waist
- Straight legs
- Side seam pockets
- 65% polyester / 35% cotton
- Available in sizes: 1 (small) - 8 (5XL)

### ■ Color Selection

10 White

63 Marina

71 Lake Blue

73 Nautical Navy

43 Cabernet

## (C) Ladies Princess Pincord Tunic

▲ **Item number: MDT7600671**

- Princess seams
- Button-front
- Contrasting white collar
- 75% polyester / 25% cotton
- Available in sizes: 1 (small) - 8 (5XL)

## (D) Elastic Waist Pincord Pants

▲ **Item number: MDT7512770**

- Full elastic waist
- Straight legs
- Side seam pockets
- 75% polyester / 25% cotton
- Available in sizes: 1 (small) - 8 (5XL)

### ■ Color Selection

Cyrstal Blue



Add color selection and color code to end of item number .

# Aprons



## Cobbler Apron

▲ **Item number: TP61**

- Adjustable side ties
- Two divided pockets
- 80% polyester / 20% cotton
- 5 oz, Performance Blend Poplin
- Unisex: M and L

### Color Selection

BK	Black	LB	Light Blue
KG	Green	NV	Navy
RD	Red	RB	Royal Blue
		TN	Tan



## Waist Apron

▲ **Item number: TT46**

- Side ties
- Soil release finish
- 3 divided pockets
- 7.5 oz Twill
- 65% polyester / 35% cotton
- Unisex - One size fits most

### Color Selection

BK	Black	NV	Navy
WH	White		



## Standard Bib Apron

▲ **Item number: 1430**

- Clean front with reinforced braid ties
- Soil release
- 7.5 oz Twill
- 65% polyester / 35% cotton
- 33" Length
- Unisex - One size fits most

### Color Selection

BK	Black	WH	White
GR	Green	WN	Wine
RD	Red	RB	Royal Blue
NV	Navy		

Add color selection and size code to end of item number.



## Smocks & Vests



### 3/4 Sleeve Smock

▲ **Item number: MDT76003**

- Button-front
- Two lower patch pockets
- 65% polyester / 35% cotton
- Available in sizes: 1 (small) - 6 (XXXL)

#### ■ Color Selection

71	Lake Blue	63	Marina
72	Rich Royal	43	Wine
73	Nautical Navy	41	Volunteer Pink

### Button-Front Volunteer Vest

▲ **Item number: 1360**

- Button-front
- Left breast pocket
- Two lower pockets
- Soil release
- 7.5 oz. Twill
- 65% polyester / 35% cotton
- Available in sizes: S – 4XL



#### ■ Color Selection

BK	Black	RD	Red
NV	Navy	RB	Royal

Add color selection and size code to end of item number.

## Chef Uniforms



### (A) Knot Button Chef Coat

▲ **Item number: 335ERS\***

- Double-breasted style
- Knot buttons
- Permanent press twill
- Preshrunk 100% cotton
- Left chest pocket
- Vented cuffs
- Available in sizes: 32-62



### (B) Pearl Button Chef Coat

▲ **Item number: MDT7750210\***

- Double-breasted style
- Pearl-like buttons
- Permanent press twill
- Left chest pocket
- Vented cuffs
- 65% polyester / 35% cotton
- Available in sizes: 1 (small) - 7 (4XL)



### Checkered Chef Pants

▲ **Item number: MDTCHEF\*\***

- Plain front, straight cut
- Permanent press twill
- Zipper front
- Inseam 28-34" or unfinished length (u)
- Available in sizes: 28 - 56



\* Add size code to end of item number

\*\* Add "size" x "inseam" to end of item number (example: MDTCHEF28X28)

# Candystripe Uniforms

## Candystripe Jumper

▲ **Item number: 8575RCR**

- Classic fit
- Gathered skirt
- Two pockets
- Two button waistband adjustment
- 65% polyester / 35% cotton
- Available in sizes: XS – XXXL

*Add color selection and size code to end of item number.*

## Volunteer Cobbler Apron

▲ **Candy Stripe: 8583RCR**

▲ **Volunteer Pink: 89017RRX**

- Lower divided pocket
- Reinforced side ties
- 65% polyester / 35% cotton
- One size fits most

## Unisex Candystripe Top

▲ **Item number: 983RCR**

- V-neck scrub style top
- Pullover
- 65% polyester / 35% cotton
- Available in sizes: XS – XXXL

*Add color selection and size code to end of item number.*







# MEDLINE TEXTILES

PerforMAX, ComfortEase, greensmart and SilverClear are trademarks of and AngelStat, ASEP, Medline and SilverTouch are registered trademarks of Medline Industries, Inc.

ResiStat is a registered trademark of Shakespeare Conductive Fibers, LLC



**Medline Industries, Inc.**

One Medline Place  
Mundelein, IL 60060

**Medline United States**  
**1-800-MEDLINE (633-5463)**

[www.medline.com](http://www.medline.com) | [info@medline.com](mailto:info@medline.com)

**Medline Canada**  
**1-800-396-6996**

[www.medline.ca](http://www.medline.ca) | [canada@medline.com](mailto:canada@medline.com)

**Medline México**  
**01-800-831-0898**

[www.medlinemexico.com](http://www.medlinemexico.com) | [mexico@medline.com](mailto:mexico@medline.com)



We have taken steps to ensure that our business is run in a manner that contributes to the global effort to protect our environment. This catalog was printed in the United States with 10% post consumer waste (PCW) certified for responsibility and environmentally friendly ink.

Some products may not be available for sale in Mexico or Canada. We reserve the right to correct any errors that may occur within this brochure.  
©2012 Medline Industries, Inc. MKT212133 / LIT1021C / 15M / QD / 26