

# Protective Apparel

**Convertors® Products**





*As your partner, our goal is to help you maximize patient care at the most economical cost. Using these products from Cardinal Health in conjunction with an effective standardization program can add up to important total supply chain savings. That can help you stay competitive in today's health-care environment.*





2100PG

3201PG

AT4453

## Isolation and Cover Gowns

These protective garments are available in single-layer spunbonded polypropylene for basic coverage or a tri-layer SMS fabric for increased fluid resistance. Each gown features a waist belt and elastic cuffs. Choose from either ties or a tape tab at the neck.

### Isolation Gowns – Spunbonded Polypropylene

Cat. No.	Color	Size	Packaging
1100PG	Yellow	Universal (ties)	10/liner, 10 liners/case
1101PG	Yellow	X-large (ties)	10/liner, 10 liners/case
1200PG	Blue	Universal (ties)	10/liner, 10 liners/case
AT4437-BD	Yellow	Universal (tape tab)	10/liner, 10 liners/case
AT4437-XL	Yellow	X-large (tape tab)	10/liner, 10 liners/case

### Cover Gowns – SMS

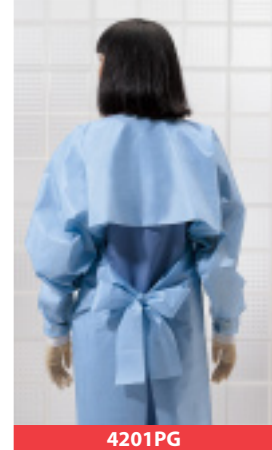
Cat. No.	Color	Size	Packaging
2100PG	Yellow	Universal (ties)	10/liner, 10 liners/case
2101PG	Yellow	X-large (ties)	10/liner, 10 liners/case
2200PG	Blue	Universal (ties)	10/liner, 10 liners/case
2201PG	Blue	X-large (ties)	10/liner, 10 liners/case
AT6100	Yellow	Universal (tape tab)	10/liner, 10 liners/case
AT6100-XL	Yellow	X-large (tape tab)	10/liner, 10 liners/case
AT6200	Blue	Universal (tape tab)	10/liner, 10 liners/case
AT6200-XL	Blue	X-large (tape tab)	10/liner, 10 liners/case

## Nonsterile Procedure Gowns

Designed specifically for nonsterile applications including endoscopy, dialysis, urology, emergency rooms, burn units, labor and delivery, housekeeping, clinical labs and biopsies. These gowns are constructed from a fluid-resistant, tri-layer SMS fabric and feature a waist belt, VELCRO® neck closure and knit cuffs. Available in universal or extra-large sizes.

### Nonsterile Procedure Gowns

Cat. No.	Color	Size	Packaging
3200PG	Blue	Universal	10/liner, 6 liners/case
3201PG	Blue	X-large	10/liner, 6 liners/case



## Impervious Gowns

For use in settings where there is a probable occurrence of being splashed, sprayed or soaked by bodily fluids or pathogen carriers. Each impervious material has been tested and meets the following standards: ASTM F1670 and ASTM F1671. Both half-back, full-back and open-back styles are designed to slip easily over the head and may be removed easily without violating proper technique.

### Plastic Film Gown (Half-Back)

Cat. No.	Color	Size/Description	Packaging
5210PG	Blue	Universal with thumbhooks	15/box, 5 boxes/case
5211PG	Blue	Universal with thumbhooks, bulk pack	25/liner, 4 liners/case

### Impervious Isolation Gowns (Half-Back)

Cat. No.	Color	Size/Description	Packaging
4201PG	Blue	Universal with knit cuffs	100/case
4203PG	Blue	XX-large with knit cuffs	100/case
4211PG	Blue	Universal with thumbhooks	100/case
4213PG	Blue	XX-large with thumbhooks	100/case

### Impervious Isolation Gowns (Full-Back)

Cat. No.	Color	Size/Description	Packaging
7100PG	Yellow	Universal with knit cuffs	100/case
7101PG	Yellow	X-large with knit cuffs	100/case
7300PG	White	Universal with knit cuffs	100/case
7301PG	White	X-large with knit cuffs	100/case

### Impervious Cover Gown (Open-Back)

Cat. No.	Color	Size/Description	Packaging
6202PG	Blue	Large with knit cuffs	60/case





2201LJ

2301LC

2312LC



2201CV

1201CV

## Lab Coats and Jackets

These limited-use lab coats and jackets are constructed from tri-layer SMS material, which provides fluid resistance without sacrificing comfort. All coats and jackets include multiple pockets and are available in a variety of sizes.

### Basic Lab Coats with Traditional Collar

Cat. No.	Color	Size	Packaging
1301LC	White	Medium	25/case
1302LC	White	Large	25/case
1303LC	White	X-large	25/case
1304LC	White	XX-large	25/case

### Fluid-Resistant Lab Coats with Traditional Collar

Cat. No.	Color	Size	Packaging
2301LC	White	Medium	25/case
2302LC	White	Large	25/case
2303LC	White	X-large	25/case
2304LC	White	XX-large	25/case
2201LC	Blue	Medium	25/case
2202LC	Blue	Large	25/case
2203LC	Blue	X-large	25/case
2204LC	Blue	XX-large	25/case

### Fluid-Resistant Lab Coats with Knit Collar

Cat. No.	Color	Size	Packaging
2311LC	White	Medium	25/case
2312LC	White	Large	25/case
2313LC	White	X-large	25/case
2314LC	White	XX-large	25/case

**Fluid-Resistant Professional Jackets with Knit Collar**

Cat. No.	Color	Size	Packaging
2300LJ	White	Medium	25/case
2301LJ	White	Large	25/case
2302LJ	White	X-large	25/case
2303LJ	White	XX-large	25/case
2200LJ	Blue	Medium	25/case
2201LJ	Blue	Large	25/case
2202LJ	Blue	X-large	25/case
2203LJ	Blue	XX-large	25/case

*Limited-Use Scrub Tops and Pants*

Our blue unisex scrubs are made of a high-quality, fluid-resistant, tri-layer SMS fabric that combines strength with the softness and comfort of linen. Short sleeve tops feature an easy-to-don V-neck and two large front pockets. Pants are constructed with latex-free elastic and one back right pocket.

**Short Sleeve Top with V-Neck**

Cat. No.	Color	Size	Packaging
23502T	Blue	Medium	60/case
23503T	Blue	Large	60/case
23504T	Blue	X-large	60/case
23505T	Blue	XX-large	60/case
23506T	Blue	3X-large	60/case

**Pants with Elastic Waist**

Cat. No.	Color	Size	Packaging
23602PE	Blue	Medium	60/case
23603PE	Blue	Large	60/case
23604PE	Blue	X-large	60/case
23605PE	Blue	XX-large	60/case
23606PE	Blue	3X-large	60/case

*Coveralls*

These durable disposable coveralls are constructed from SMS fabric and are available with open or elastic cuffs and ankles. Perfect for staff or visitor use.

**Coveralls with Open Cuffs and Ankles**

Cat. No.	Color	Size	Packaging
1200CV	Blue	Universal	24/case
1201CV	Blue	X-large	24/case
1202CV	Blue	XX-large	24/case

**Coveralls with Elastic Cuffs and Ankles**

Cat. No.	Color	Size	Packaging
2200CV	White	Universal	24/case
2201CV	White	X-large	24/case
2202CV	White	XX-large	24/case



4359



4380C



4381



3274



3276



9303



3474



## Headwear

From our surgeon's caps and hoods to our premium bouffants, our headwear is designed to be comfortable and at the same time provide necessary coverage. Available in a variety of styles, colors and sizes.

### Nurse's Cap

Cat. No.	Color	Description	Packaging
3290	White, celebration print	Designer™ nurse's cap	100/box, 6 boxes/case

### Surgeon's Caps and Hoods

Cat. No.	Color	Description	Packaging
4359	Blue	Easy-Tie™ surgeon's cap	100/box, 6 boxes/case
4359SMS	Blue	SMS surgeon's cap	100/box, 5 boxes/case
4380C	Blue	Comfort™ hood	75/box, 6 boxes/case
4381	Blue	Surgeon's hood with ties	100/case

### Spunbonded Polypropylene Bouffants

Cat. No.	Color	Description	Packaging
3244	Blue	Comfort™ bouffant, 21"	100/box, 10 boxes/case
3275	Blue	Comfort™ bouffant, 23"	300/case
3274	Blue	Comfort™ bouffant, 24"	75/box, 10 boxes/case
3277	Blue	Comfort™ bouffant, 25"	75/box, 10 boxes/case
3276	White, celebration print	Designer™ bouffant, 25"	75/box, 10 boxes/case
3482	Blue	Comfort™ bouffant, large, adjustable	25/box, 6 boxes/case
9302	White	Comfort™ bouffant, 21"	250/case
9303	White	Comfort™ bouffant, 24"	250/case

### Premium Bouffants

Cat. No.	Color	Description	Packaging
B21HD	Blue	Bouffant, 21"	100/box, 10 boxes/case
W24HD	White	Bouffant, 24"	75/box, 10 boxes/case
B24HD	Blue	Bouffant, 24"	75/box, 10 boxes/case

### Premium Printed Bouffants

Cat. No.	Print Style	Description	Packaging
3474	Faces, bears, tropical	Bouffant, 24"	75/box, 10 boxes/case

## Footwear

Our durable footwear is constructed of materials ranging from basic spunbonded polypropylene to polyethylene-coated SMS to accommodate a wide range of intended uses. The Dura-Trac™ shoe cover is constructed of poly-film, which helps minimize lint and enhance environment cleanliness. Excellent anti-skid protection makes this shoe cover ideal for the challenges of dry and wet conditions. Available in a variety of styles and sizes.

### Spunbonded Polypropylene Shoe Covers

Cat. No.	Description	Size	Packaging
2850	Basic shoe cover	Universal	100/box, 4 boxes/case
2852	Skid-resistant shoe cover	Universal	100/box, 4 boxes/case
2854	Skid-resistant shoe cover	X-large	100/box, 4 boxes/case
2859	Skid-resistant shoe cover	XX-large	100/box, 4 boxes/case

### Fluid-Resistant SMS Shoe Covers

Cat. No.	Description	Size	Packaging
4850	Dura-Fit™ shoe cover	Universal	100/box, 4 boxes/case
4852	Dura-Fit™ skid-resistant shoe cover	Universal	100/box, 4 boxes/case
4854	Dura-Fit™ skid-resistant shoe cover	X-large	100/box, 4 boxes/case
4855	Dura-Fit™ skid-resistant shoe cover	XX-large	100/box, 4 boxes/case
4870	Dura-Pak™ shoe cover	Universal	400/case
4872A	Dura-Pak™ skid-resistant shoe cover	Universal	400/case
4874	Dura-Pak™ skid-resistant shoe cover	X-large	400/case
4875	Dura-Pak™ skid-resistant shoe cover	XX-large	400/case
4856	Ankle-top shoe cover	Universal	80/box, 4 boxes/case
4858	Ankle-top shoe cover	X-large	80/box, 4 boxes/case
6852	TracRight™ skid-resistant shoe cover	Universal	100/box, 4 boxes/case
6854	TracRight™ skid-resistant shoe cover	X-large	100/box, 4 boxes/case

### Heavy-Duty Fluid-Resistant SMS Shoe Covers

Cat. No.	Description	Size	Packaging
5850	Shoe cover	Universal	100/box, 4 boxes/case
5852	Skid-resistant shoe cover	Universal	100/box, 4 boxes/case
5854	Skid-resistant shoe cover	X-large	100/box, 4 boxes/case
5859	Skid-resistant shoe cover	XX-large	100/box, 4 boxes/case

### Tyvek® Shoe Covers

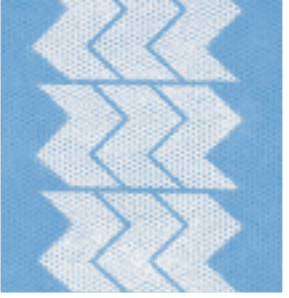
Cat. No.	Description	Size	Packaging
9314	High-top shoe cover, vinyl sole, ties	Small	300/case
9315	High-top shoe cover, vinyl sole, ties	Medium	300/case
9316	High-top shoe cover, vinyl sole, ties	Large	300/case
93161	High-top shoe cover, vinyl sole, ties	X-large	300/case

### Impervious Shoe Covers

Cat. No.	Description	Size	Packaging
8357	Ankle-top shoe cover	Universal	30/box, 4 boxes/case
8453	Critical Zone® high-top shoe cover	Universal	20/box, 4 boxes/case
8454	Critical Zone® high-top shoe cover	X-large	20/box, 4 boxes/case
8457	FullGuard™ high-top shoe cover	Universal	20/box, 4 boxes/case
8458	FullGuard™ high-top shoe cover	X-large	20/box, 4 boxes/case

### Dura-Trac™ Poly-Film Shoe Covers

Cat. No.	Description	Size	Packaging
9326	Dura-Trac™ poly-film shoe cover	Universal	100/bag, 300/case
9327	Dura-Trac™ poly-film shoe cover	X-large	100/bag, 300/case



4852



9327



2852



9316

8357



8454



## Convertors® Products

**For additional information, please call your  
Cardinal Health, Convertors® Products  
sales representative or customer  
service at 1.800.964.5227.**

Convertors and Critical Zone are registered trademarks and Comfort, Designer, Dura-Fit, Dura-Pak, Dura-Trac, Easy-Tie and FullGuard and TracRight are trademarks of Cardinal Health, Inc. or one of its subsidiaries.  
Tyvek is a registered trademark of E.I. du Pont de Nemours and Co.  
VELCRO is a registered trademark of Velcro Industries B.V.

© Copyright 2005. Cardinal Health, Inc. or one of its subsidiaries.  
All rights reserved.  
Lit. No. 2CON0035 (0905/2.5M/MC2523)

● Paper contains a minimum of 10% post-consumer fiber.



Cardinal Health  
Convertors® Products  
1500 Waukegan Road  
McGaw Park, IL 60085

[www.cardinal.com/convertors](http://www.cardinal.com/convertors)