



# SELF SEAL STERILIZATION POUCH

WITH INTERNAL AND EXTERNAL INDICATORS

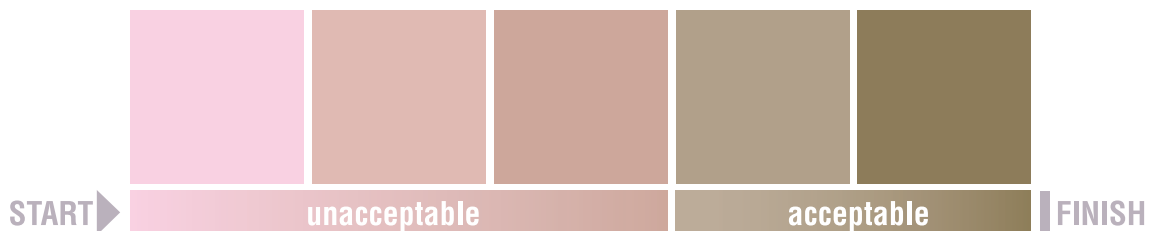
## PROCESS INDICATOR COLOR CHANGE GUIDE

As a reference we have included this COLOR CHANGE GUIDE to help in the interpretation of the color change when the pouches are processed in an autoclave, or ethylene oxide sterilization chamber.

**Caution: the chemical indicators are to be used as a sterilization process indicator only.**

Due to the diverse color range observed while processing pouches, we have provided recommended acceptable color changes to easily distinguish between correctly processed and improperly processed or unprocessed pouches.

### Steam Sterilization



### EO Sterilization



These suggested color changes are applicable for the following HENRY SCHEIN® Brand item numbers:

|                        |                          |                         |                       |                        |                        |                        |
|------------------------|--------------------------|-------------------------|-----------------------|------------------------|------------------------|------------------------|
| 112-4853<br>(3.5x9")   | 112-4855<br>(3.5x9")bulk | 112-4857<br>(3.5x5.25") | 112-4859<br>(2.25x4") | 112-4861<br>(5.25x12") | 112-4863<br>(4.25x11") | 112-4865<br>(13x20")   |
| 112-4854<br>(5.25x10") | 112-4856<br>(2.75x9")    | 112-4858<br>(7.5x13")   | 112-4860<br>(9x15")   | 112-4862<br>(10.5x17") | 112-4864<br>(8x13")    | 112-4866<br>(3.25x12") |

Should you need further assistance in using the color change guide, please contact our customer service center at 1-800-472-4346.