



**Clinical  
Excellence  
Starts  
Here.**

Discover our promotional offers inside



**A.S.A.P.®**  
All Surface Access Polisher



**Evanesce™ Flow**  
Flowable Restorative



**Cling2®**  
Resin Optimized Temporary Cement

## RESTORATIVE

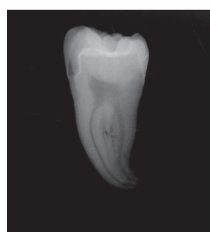
# Evanesce™ Flow

Flowable Restorative



Offering preferred handling, high strength and amazing esthetics, Evanesce™ Flow is your solution to achieving better clinical outcomes for all minimally-invasive direct restorations.

- Thixotropic for excellent control, Evanesce Flow will not slump on a vertical surface making it suitable for Class V restorations and temporary veneers.
- Highly filled to give it strength, Evanesce Flow can be used as a stand-alone restorative or as a base/liner.
- Evanesce Flow is clearly distinguishable from composite on a radiograph for ease of diagnosis.
- Evanesce Flow is available in 3 opacities: Enamel (80%), Universal (85%) and Dentin (90%) and 10 VITA shades for procedural versatility.



### Evanesce Flow Shades and Opacities

Enamel Shades (80% Opacity)				
A1*	A2*	A3*	B1*	
Universal Shades (85% Opacity)				
A1*	A2	A3	A4*	B1* BL1*
Dentin Shades (90% Opacity)				
	A2*			

\*Available in 1.7g Syringes Only

### EVANESCE™ FLOW

Buy 4 of the Same 1.7 Gm. Syringes, Get 1 at no charge

(shipped with order)

\$43.99 ea.

4+1

**A1 Universal** (791-0621)  
**A2 Universal** (791-0622)  
**A3 Universal** (791-0620)  
**B1 Universal** (791-0619)  
**A4 Universal** (791-0588)  
**BL1 Universal** (791-0589)  
**A1 Enamel** (791-0583)  
**A2 Enamel** (791-0584)  
**A3 Enamel** (791-0585)  
**B1 Enamel** (791-0586)  
**A2 Dentin** (791-0587)

## POLISHING

# A.S.A.P.®

All Surface Access Polishers



Achieve the ultimate high shine, in less than a minute with diamond impregnated A.S.A.P.® Polishers. These flexible polishing spirals are designed for optimal adaptation to any surface, including difficult to reach areas, such as interproximal surfaces.

- A.S.A.P. Polishers provide all surface access polishing and are ideal for use on most ceramics, zirconia, lithium disilicate, and provisional material.
- The A.S.A.P. Pre-polisher (purple) and A.S.A.P. Final High Shine Polisher (peach) are designed to provide a life-like shine in under 1 minute.
- Autoclavable 30 times or more, A.S.A.P. Polishers provide a consistent polish use after use.



Dentistry and photography courtesy of Danièle Larose, DDS, AAACD.

### A.S.A.P.® POLISHERS

Save \$20  
Starter Kit

\$158.99 ea.

(791-0370)

**Contents:** 3 x Pre-polisher Small, 3 x Pre-polisher Large, 3 x Final High Shine Polisher Small, 3 x Final High Shine Polisher Large

Save \$20  
on any refill 6-Pack

**Large** (791-0378) Ea. \$81.99

**Small** (791-0377) Ea. \$67.99

**Contents:** 3 x Pre-polishers, 3 x Final High-Shine Polishers (Small or Large)

SAVE  
\$20

SAVE  
\$20

BACKED BY OUR 30-DAY TRY-IT GUARANTEE



# Anterior Quad-Tray®



Designed to prevent distortion, the Anterior Quad-Tray® is constructed of rigid aluminum that will not distort when placed intraorally or upon removal, eliminating retakes and excessive occlusal adjustment.

- Wide arch design ensures it will not impinge on soft tissue and prevents burn through.
- Customizable to each patient's arch size.
- Available in a 50-pack.

## IMPRESSIONS

### ANTERIOR QUAD-TRAY®

Save \$25  
50-Pack  
\$90.99 ea.  
(791-0393)

SAVE  
\$25



Dentistry and photography courtesy of Bob Margeas, DDS.

## TEMPORIZATION

# Cling2®

## Resin Optimized Temporary Cement

Optimized for performance, Cling2® is an easy-to-use temporary cement providing superior adhesion and an excellent marginal seal. Cling2 is the perfect choice for cementing provisional crowns, bridges, inlays, and onlays.

- Cling2 sets quickly (60-90 seconds) and easily peels off the margins in seconds for chair side efficiency.
- The Cling2 carboxylate resin and non-eugenol, zinc oxide based formula is bacteriostatic for exceptional tissue health and patient comfort.
- Temporaries cemented with Cling2 simply won't come off until you need them to. And when it's time for removal, the temporary releases easily with minimal clean-up of the preparation.



### CLING2® RESIN OPTIMIZED TEMPORARY CEMENT

Buy 3 of the same  
Get 1 at no charge  
(shipped with order)

3+1

5mL (791-0032) Ea. \$84.99  
10mL (791-0033) Ea. \$124.99  
25mL (791-0694) Ea. \$199.99



Dentistry and photography courtesy of Bob Margeas, DDS.



Scan to watch  
Cling2 Advantages  
with Michael Miyasaki, DDS

Mention promo code NCN when ordering!

[clinicianschoice.com](http://clinicianschoice.com)



REQUESTED IN HOME OCTOBER 28–OCTOBER 31

# ARUBA

Dental Conference  
**2022**

## Register Today

February 3 - 5, 2022

HYATT REGENCY ARUBA  
RESORT SPA & CASINO

### Featured Speakers



Dr. William "Bo"  
Bruce



Dr. David  
Chan



Dr. Marc  
Geissberger



Dr. Ron  
Kaminer



Dr. Susan  
McMahon



Dr. Adamo  
Notarantonio

**arubadentalconference.com**

For more details, contact our Continuing  
Education Department at 1-800-265-3444 ext. 223



Presented by:

**Clinician's Choice®**  
Designed for better dentistry.

Scan here to  
learn more



Available through

**HENRY SCHEIN®**  
DENTAL

**www.henryscheindental.com** Offers expire 12/31/2021

21EX1604

© 2021 Henry Schein, Inc. No copying without permission. Not responsible for typographical errors. To guarantee special pricing/offers, where applicable, please include the three-digit promo code when ordering. Henry Schein Dental reserves the right to discontinue this promotion at any time including, without limitation, if supply or demand for the promotional products is affected due to extraordinary events. Note: Participating in a promotional discount program (e.g., points, discount redemptions or other special awards) is only permissible in accordance with discount program rules. By participation in such program, you agree that, to your knowledge, your practice complies with the program requirements. For Henry Schein promotions: This promotion offers a bundled discount. The cost of any "buy/get" (or "no charge") items is a discount applied to your other purchases on the same invoice. The reportable value (unit price) of the "no charge" item will be identified on the invoice. To calculate the applicable discount on the other items on the same invoice, divide the total value (unit price(s)) of any no charge item(s) by the total value (extension price(s)) of all other items purchased on the same invoice, and apply the resulting percentage equally to each item to determine net prices. For manufacturer promotions: The prices stated in the invoice or statement may reflect a discount or be subject to a rebate. You must fully and accurately report this stated discount price, or if applicable, any net pricing, after giving effect to any rebates, to Medicare, Medicaid, Tricare and any other federal or state program upon request by any such program. Accordingly, you should retain these records. It is your responsibility to review any agreements or other documents applicable to these prices to determine if they are subject to a rebate.

© Clinician's Choice Dental Products, Inc. 2021. All rights reserved.