

HORIBA

Medical



Yumizen
C560

Yumizen C560 Chemistry Analyzer

Yumizen
C560



Instrument & Reagent Synergy: The Workhorse!

The Yumizen C560 clinical chemistry analyzer paired with high quality POINTE reagents provides you with rapid and reliable test results. A standalone floor model analyzer, offering many high-end features typically found only in large integrated systems, the perfect workhorse for midsize laboratories, from your trusted partner in clinical diagnostics, HORIBA Medical.

Robust Hardware

Enhanced Liquid System

- 8 stage wash station for permanent glass reaction cuvettes
- High pressure interior probe wash, carryover <0.05%



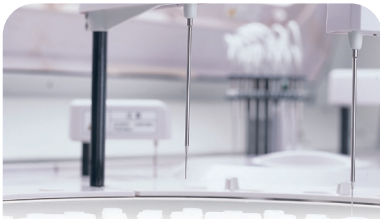
Low Reagent Consumption

- Light-Spot Flattening Technology facilitates lower reaction volume
- 24 hour refrigeration at 2-10° C
- Minimum reaction volume: 120 µL
- Reagent volume: 10-350 µL
- Cuvette volume: 120-360 µL



Intelligent Probe System

- Supports methods with up to 4 reagents
- Vertical and horizontal collision protection
- Automatic system recovery
- Liquid level detection, clot detection, bubble detection

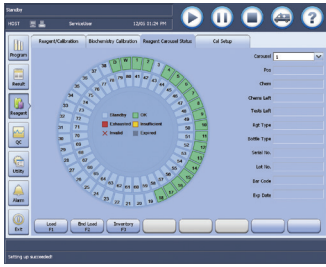


Easy to Perform Maintenance

- Front loaded compartment for easier access to ISE pack, wash solution, and deionized water
- Easy access for routine maintenance and troubleshooting
- Built in step-by-step maintenance guide



Advanced software

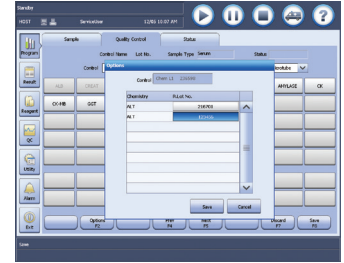


User-friendly Interface

- Real-time analytical and carousel status
- Monitoring bi-directional LIS interface transmission

Real-time QC Status Monitoring

- Levey-Jennings chart and QC out-of-range real time alarm
- Customizable periodic QC reminder
- QC testing by reagent lot



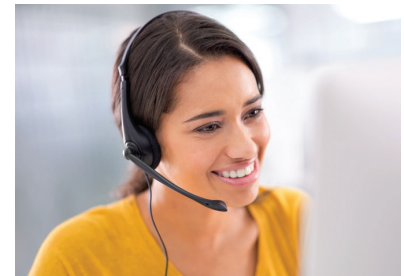
The screenshot displays a table of test results. The table has columns for 'Lot No.', 'Cal No.', 'Test No.', 'Test Unit', 'Test Lot', and 'Cal Lot'. The data is organized into rows, with some rows highlighted in blue. The table is surrounded by various control parameters and a sidebar with icons for different software functions.

Traceable Test Results

- Historic data recall from reagent/ calibrator/ control archive
- Intuitive software, easy to review historical results

HORIBA Medical Service and Support

- Technical Service and Applications Support teams help avoid downtime and can lower your overall costs.
- Experienced applications support is available to train and assist you from installation to validation to reporting results.
- You can plan and budget in advance with proactive services that reduce your risk.
- With scheduled maintenance, you will have confidence that your analyzer will be available when you need patient results.



Comprehensive POINTE Chemistry Reagent Package

From a manufacturer with over 40 years of experience designing and manufacturing chemistry reagents, POINTE reagents provide clinicians worldwide with actionable patient data.



System function

Fully automated, discrete, random access, with STAT sample priority capability

Throughput: 400 photometric tests/hour, up to 240 tests/hour for ISE

Measuring principles: Absorbance Photometry, Turbidimetry

Methodology: End-point, Fixed-time, Kinetic, ISE,

Single/Dual/Triple/Quadruple reagent chemistries,

Monochromatic/Bichromatic

Programming: User defined profiles and calculation

Sample Handling

Sample tray: 90 positions for primary, secondary tubes, and sample cups

Sample volume: 1.5-50 μ L, step by 0.1 μ L

Sample probe: liquid level detection, clot detection and collision protection

Probe cleaning: Interior and exterior automatic probe washing carry-over < 0.05%

Automatic sample dilution, Pre-dilution and post dilution

Dilution with ratio up to 1:150

Dilution vessel: Permanent Cuvette

Internal bar code reader

Sample/ Reagent barcode: Codabar, ITF (Interleaved Two of Five), code128, code39, UPC/EAN, Code93

Bi-directional LIS Interface transmission

ISE Module

Selection of K⁺, Na⁺, Cl⁻

Throughput: Up to 240 tests per hour

Reagent Handling

Reagent tray: 80 positions in refrigerated compartment (2-10° C)

Reagent volume: R1: 45- 350 μ L, R2-R4: 10 - 350 μ L

Reagent probe:

Liquid level detection, collision protection and inventory check

Probe cleaning: interior and exterior automatic probe washing

Reaction System

Reaction rotor: Rotating tray

90 cuvettes with automatic washing

Cuvette: Optical length 5 mm

Reaction volume: 120-360 μ L

Operating temperature: 37° C

Temperature fluctuation: \pm 0.1° C

Mixing system: 2 independent mixers

Optical System

Light Source: Halogen-tungsten lamp

Photometer: Reversed optics, grating photometry

Wavelength: 340 nm, 380 nm, 412 nm, 450 nm, 505 nm,

546 nm, 570 nm, 605 nm, 660 nm, 700 nm, 740 nm, 800 nm

Absorbance range: 0-3.3 Abs (10 mm conversion)

Resolution: 0.0001 Abs

Control and Calibration

Calibration mode: Linear (one-point, two-point and multi-point), Logit-Log 4P, Logit-Log 5P, Spline, exponential, Polynomial, Parabola

Control rules: Westgard multi-rule, Levey-Jennings, Cumulative sum check, twin plot

Operation Unit

Interface: RS-232, Network Port, USB/ parallel port

Working Conditions

Power Supply: 200-240V, 50/60Hz, 1500V or 110-130V, 60Hz, 1500V

Temperature: 15-30° C

Humidity: 35-85%

Water consumption: 20 L/hour, Deionized water

Dimension:

117cm x 71cm x 114cm (W x D x H)

46" x 28" x 45" (W x D x H)

Weight: 300 kg (661 lbs)

